

Explore the Four Corners

FARMINGTON

Jolt Your Journey™

2016 VACATION GUIDE

FarmingtonNM.org



maps attraction info
 directions friendly faces
 event details brochures



souvenirs

FARMINGTON 

Convention & Visitors Bureau

Stop by our Visitor Center at 3041 E. Main St.

1.800.448.1240 • FarmingtonNM.org

ESTABLISHED 1871

HOGBACK TRADING CO.

Tom Wheeler ~ 4th generation trader

We specialize in cultural and traditional Indian arts and crafts and old pawn, displayed over two levels in a 10,000 square foot hogan-shaped building.

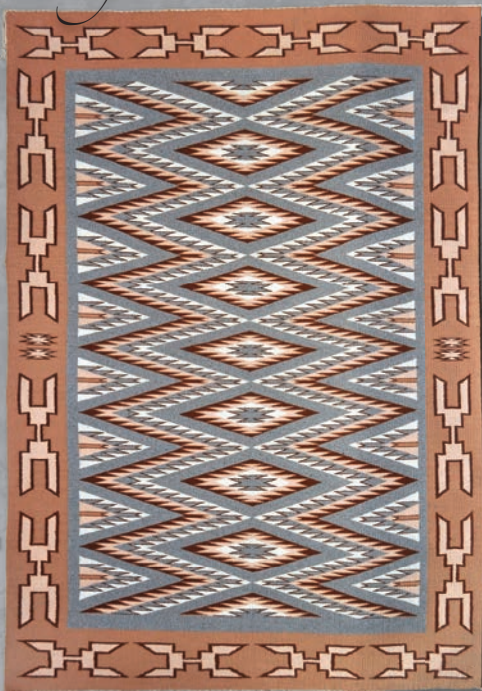
Let us energize your stay-and-play:

Stop in and we'll



Jolt Your Journey!™

A trip to Hogback Trading Co. is a rare travel treat!

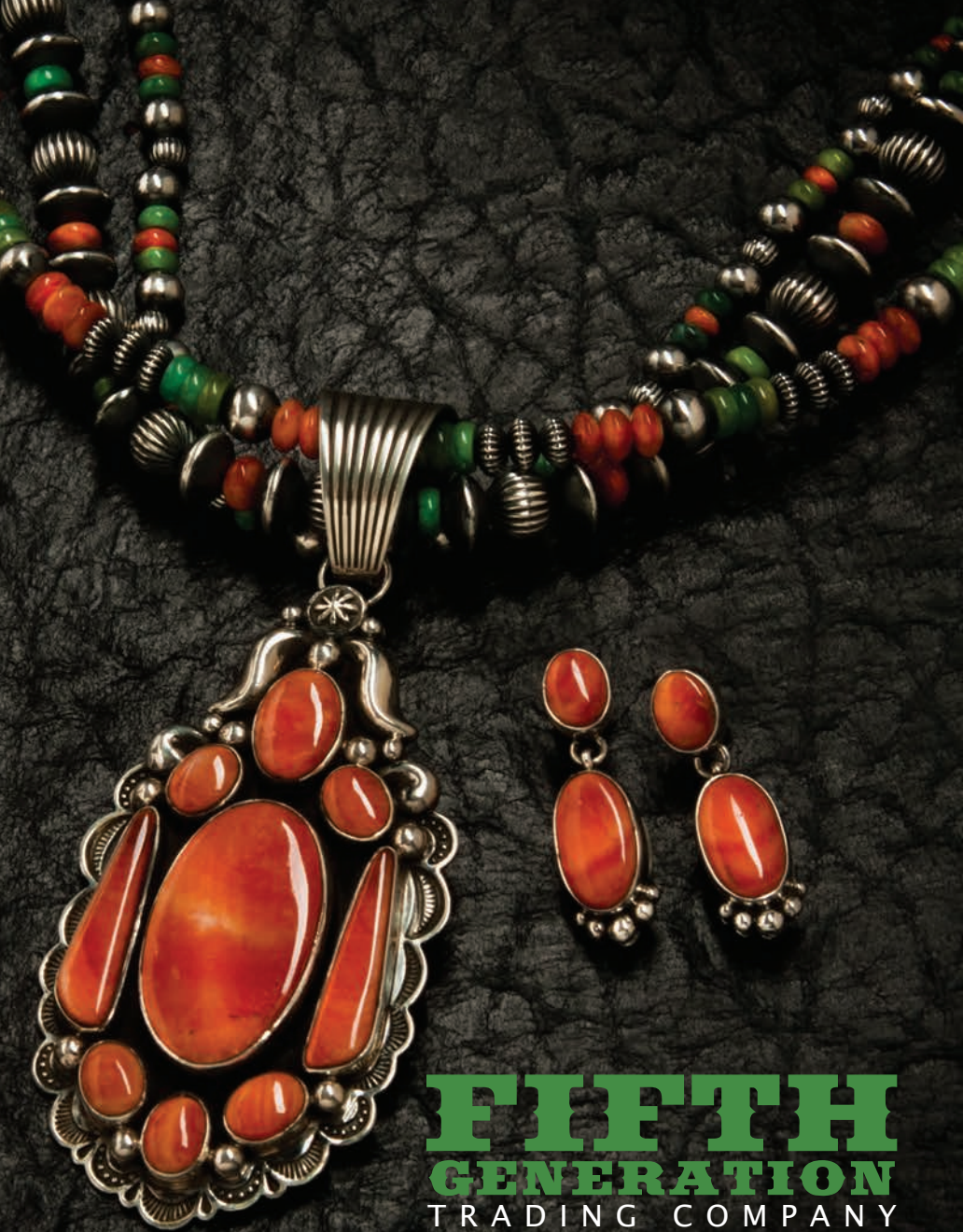


505.598.5154 · 3221 Hwy 64 · Waterflow · NM 87421

15 MILES WEST OF FARMINGTON ON HWY 64

[#playfarmington](https://www.hogbacktradingco.com)





FIFTH GENERATION

TRADING COMPANY

EXPERIENCE THE TRADITION

JEWELRY • POTTERY • BASKETS • FOLKART
BOOKS • PAINTINGS • NAVAJO WEAVINGS

Downtown Farmington, NM - 232 West Broadway
505-326-3211 - Monday - Saturday 9:00am-5:30pm

CONTENTS

OUTDOOR ADVENTURES

- Off The Beaten Path — 15
- Points Of Interest — 16
- Biking — 18
- Fishing — 19
- Golf — 20
- Disc Golf — 20
- Water Sports — 20
- Outdoor Rentals — 21
- Guided Tours — 21
- Off-Roading — 22
- Rock Climbing — 25

FAMILY ADVENTURES

- Farmington Parks — 31
- Family Fun Activities — 32

CULTURAL ADVENTURES

- Native American Cultures — 41
- National Parks — 43
- Museums — 45
- Gaming — 46
- Arts & Entertainment — 47
- Shopping — 56

FEATURES

- Top 5 Jolts — 10
- Off-Roading — 22
- Photo Tips & Tours — 52

TRAVEL INFO

- City Map — 26
- Regional Map — 36
- Lodging — 58
- Event Calendar — 64
- Helpful Numbers — 72





FarmingtonNM.org
#joltyourjourney



PUBLISHER'S BOX

Publisher: Hawk Media, Design: FEEL Design Associates, Production: Barbara Davis
Cover photo: Paul McPherson. Photographers: Dale Anderson, Steve Bundy, Farmington CVB,
Major Graham, Keenan Harvey, Ned James, Paul McPherson, Kate Russell, Robert Williams.
Special thanks to the FCVB staff.

© Hawk Media 2015

Experience the Magic of our Magnificent Southwest Settings



Blue Lake Ranch

SW Colorado's Premier Country Inn
15 minutes from Durango, Colorado
25 minutes from Mesa Verde National Park
Private Estate with Gardens and Lake
BlueLakeRanch.com



Ridgewood Events Center

SW Colorado's first & finest Special Event Center
15 min. from Durango, 45 min. from Farmington
Mountain, River and Garden views
Weddings and other events for up to 250
RidgewoodEvents.com



Casa Blanca Inn

Downtown Farmington, New Mexico
Bed and Breakfast and Executive Rentals
Exceptional Lodging in Southwest Style
505-327-6503
4CornersBandB.com



Don Gaspar Inn

Near the Plaza in Santa Fe, New Mexico
One of Fodor's top Inns of the World
Captivating, Affordable, Spacious
505-986-8664
DonGaspar.com



SO MUCH EXCITEMENT SO CLOSE TO HOME.

- HOT SLOTS
- LIVE-ACTION TABLE GAMES
- POKER
- DELICIOUS DINING

So drive less and get MORE TO LOVE
at **Northern Edge Casino.**



Only 5 Minutes Southwest of Farmington.



NORTHERN  EDGE
CASINO™

NAVAJO  GAMING
Gambling Problem? Call 1.800.GAMBLER

**FIRE
ROCK**
CASINO.

**FLOWING
WATER**
CASINO.

**TWIN
ARROWS**
CASINO RESORT.

5 Minutes Southwest of Farmington

SHARE YOUR VACATION WITH THE WORLD: #JOLTYOURJOURNEY

TOP 5 WAYS TO JOLT YOUR JOURNEY

Farmington is a place where outdoor lovers and active families thrive!

It's a community that likes to make strong favorable impressions created from unexpected surprises affectionately called jolts. They can be found wherever you go in our beautiful and unique community. So, plan lots of time for exploring and doing while here and don't miss out on the 2016 Top 5 Ways to Jolt Your Journey, in no particular order.

1

ROCK CLIMBING WALL

San Juan College's Indoor Rock Climbing Wall located inside the Health and Human Performance Center is one of the largest in the west. It offers 6,000 square feet to climb and includes 17 top rope stations, 12 lead climbing lines, 2 roofs, a running crack and a 600 square foot bouldering cave. Great for all skill levels!

2

BISTI BADLANDS

If you are looking for something truly out of this world, hiking and exploring the Bisti Badlands will make you feel like you are on another planet. This area was once a coastal swamp and inland sea and home to the Bisti Beast. Talk about jolt worthy!





5

OFF-ROADING IN THE GLADE RUN RECREATION AREA

If jeeping, rock crawling, 4x4 driving and sand dune carving is your speed, Farmington has the perfect jolt for you! The Glade Run Recreation Area offers some of the best off-roading trails there are. It's the perfect place to enjoy the inspiring high desert terrain, gorgeous sunsets and thrilling explorations.

4

PUEBLITOS AND ROCK ART TOUR

Let Journey into the Past Tours make a memorable impression on you with their fantastic tours of the pueblitos and rock art! Not only are they knowledgeable but they are passionate about what they do and fascinating to listen to and learn from.

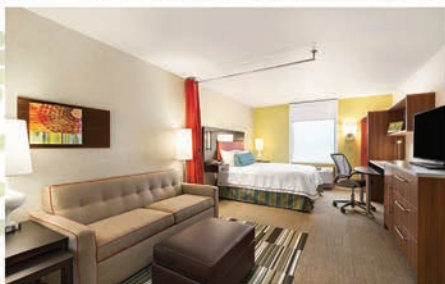
3

KOKOPELLI'S CAVE

Nothing says outdoor adventure like sleeping in a cave! This Bed & Breakfast is located 70 ft below ground and 280 ft above the La Plata River floor. With a replica kiva and waterfall-style shower/jaccuzi tub and breathtaking views, this is one overnight journey you do not want to miss.

Relax while working or just work on relaxing.

Home2 has everything travelers need to feel at home on the road.
Rates for 1 night, 7 nights, or 30+ nights.



Home2 Amenities Include:

Stylish studio & one-bedroom suites with fully-equipped kitchen & 42" flat screen HDTV | Free Wi-Fi
Free breakfast at the Inspired Table™ | Spin2Cycle laundry & fitness room | Outdoor lounge areas
Pet-friendly | Indoor pool | Meeting Space | Relax & connect in our Oasis | The Home2 Guarantee
Business Services | Home2 Market | Sustainability | Hotel Packages | Group Rates

HOME2 SUITES BY HILTON FARMINGTON/BLOOMFIELD

777 South Browning Parkway, Farmington, NM 87401

www.farmingtonbloomfield.home2suites.com

505-325-1500

Free to be you™

**Put away your smartphone
and open your mind.**

Come see what's new at the Farmington Museum!



Special membership discounts on
any fee-based traveling exhibits.
Free admission to over 200 museums
nationwide....and more.
505.599.1173 fmfound@gmail.com

3041 E. Main Street
Farmington, NM 87402
505.599.1174
www.farmingtonmuseum.org



OUTDOOR ADVENTURES

COME FOR THE ADVENTURE...

OFF THE BEATEN
PATH

POINTS OF
INTEREST

BIKING

FISHING

GOLF

DISC GOLF

WATER SPORTS

OUTDOOR RENTALS

GUIDED TOURS

OFF-ROADING

ROCK CLIMBING



Many scenic and unique outdoor adventure destinations can be found within the Farmington area that lie beyond paved roads or trails. Trace the footsteps from centuries past, taking photo ops and leave only footprints. Also, be sure to visit the National Parks section found on pg. 43 as this is their 100th Centennial celebration.



FarmingtonNM.org
[#joltyourjourney](https://twitter.com/joltyourjourney)

STAY FOR LIFE



No water or other services available. Angel Peak is located 16 miles south of Bloomfield on Hwy. 550, traveling east on CR 7175 over six miles of gravel road.

ANIMAS RIVER TRAILS

505-599-1400

Over 8 miles of woodland, riverside and nature trails weave through Animas and Berg Parks. These trails are ideal for jogging, walking, bicycling, bird and wildlife watching and horseback riding. Two pedestrian bridges cross the Animas River with several observations areas. Trails can be accessed off Browning Parkway, Animas Park and at Scott Avenue and San Juan Blvd. in Berg Park, near many local hotels.

AZTEC NATURAL ARCHES

aztecnm.com

Natural arches and bridges have a special draw for landscape photographers. Almost 300 natural arches and bridges have been identified near Aztec, divided among 24 canyon tours. Visit the Aztec Visitor Center for maps.

BISTI / DE-NA-ZIN WILDERNESS

Hwy. 371 and CR 7297

(505) 564-7600

(800) 842-3127

blm.gov/nm

Petrified logs and other fossils are scattered among the numerous colorful landforms and unique geological features of this federally protected area. Photographers come from across the globe to capture this unique landscape, featured as an alien planet in an episode of Stargate Universe. The hoodoos, spires and black and fire-red hills come to life during the “magic hours” before sunrise and sunset. An excellent selection of formations can be found 2 miles east of the parking lot. Visit FarmingtonNM.org to see a map noting many of the unique formations. Plan for at least half a day to explore the badlands properly. Bring water, sunscreen and a compass. Note: cell phone service is sparse. Primitive camping is possible, no services or water are available. The wilderness area is located 37 miles south of Farmington on Hwy. 371, and 2 miles down CR 7297.

NAVAJO LAKE STATE PARK

36 Road 4110 Unit 1

Navajo Dam, NM

(505) 632-2278

emnrd.state.nm.us/SPD/

navajolakestatepark.html

With 150 miles of shoreline and over 21,000 acres of land, Navajo Lake State Park is the ultimate playground for water

ANGEL PEAK SCENIC AREA

Hwy. 550 and CR 7175

(505) 564-7600 or

(800) 842-3127

blm.gov/nm

A 40 million-year-old geological formation surrounded by badlands, the “Angel” raises its wings over the sculpted and shaded colors of the surrounding high desert. There are overlooks and trails to explore; popular activities include hiking, photography, picnicking and camping. Primitive camping and picnic areas are available with campfire rings, tables and vault toilets.

OFF THE BEATEN PATH

WHERE ONE DAY JUST ISN'T ENOUGH

lovers. It crosses the New Mexico and Colorado state border and features sections of the famous San Juan River. Activities within the park include: camping, boating, sailing, fishing, hunting, swimming, scuba diving, water skiing, wildlife viewing and hiking. The second largest lake in New Mexico and one of the most popular State Parks, Navajo Lake offers 7 campgrounds with over 240 developed sites. Some sites offer electric and water and full hookups. Two marinas are located on the NM side of the lake. The park is located 45 miles northeast of Farmington on Hwy. 173, 550 and 511.

SHIPROCK PINNACLE

Hwy. 491, Shiprock, NM
(928) 810-8501
discovernavajo.com

The most iconic landmark in New Mexico! This magnificent geological exposed volcanic rock rises 1,582' above the high desert plain. The rock is accompanied by two radiating 150' high volcanic dikes. The rock is sacred to the Navajo people, who call it Tsébit'a'i, the rock with wings. Because of the sacred nature of Shiprock Pinnacle, climbing is not permitted. A point of interest for photographers and videographers, the peak has been featured in several films such as The Host, Disney's

The Lone Ranger and Jean-Baptiste Leonetti's Beyond The Reach. This dramatic formation is best viewed from State Highway 64 and U.S. Highway 491.

CANYON DE CHELLY NATIONAL MONUMENT

PO Box 588
Chinle, AZ 86503
(928) 674-5500
nps.gov/cach

Canyons sheltered the Ancestral Puebloans for centuries and served as an ancestral stronghold for the Navajo. Navajo families continue to farm in the canyon. A visitor center, campground and lodging facilities are available. No fee required to drive the North or South Rim Drives and hike the White House Trail. Canyon tours by private companies are available. The monument is 145 miles southwest of Farmington via Hwy. 64, Hwy. 160 and Hwy. 191.

FOUR CORNERS MONUMENT

Navajo Parks & Recreation
PO Box 2520
Window Rock, AZ 86515
(928) 871-6647
navajonationparks.org

The monument marks the only point in the United States

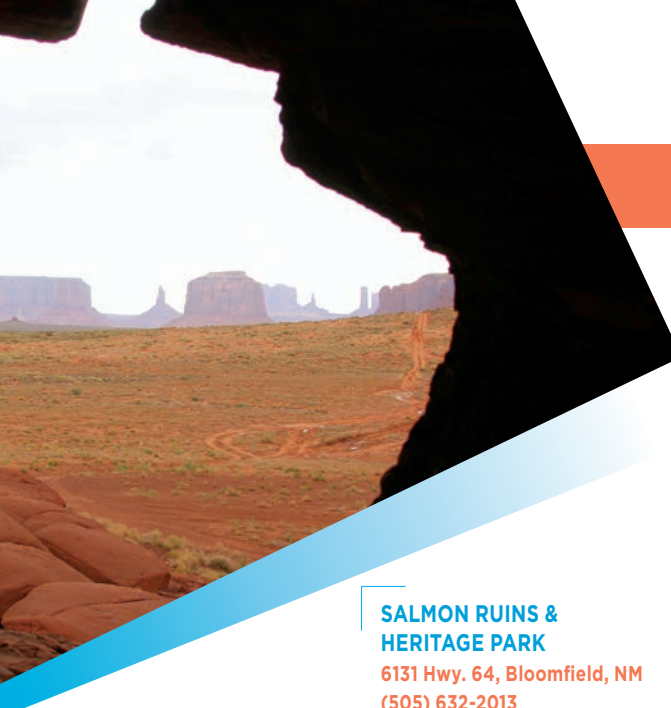
where four states meet. A new plaza and interpretive panels were unveiled in September 2010. An Indian marketplace with hand-worked crafts operates daily. The monument is a must for shutter bugs. Cost is \$5 per person, located 60 miles northwest of Farmington on Hwy. 160. Park cell number is (928) 206-2540.

MONUMENT VALLEY

PO Box 360289
Monument Valley, UT 84536
(435) 727-5870
(435) 727-5874
navajonationparks.org
discovernavajo.com

Enchanting landscapes of dramatic mesas, buttes and fragile pinnacles, in a striking palette of red and

POINTS OF INTEREST



orange, cross the border from southeast Utah to northwest Arizona. A hotel, visitor center, gift shop and restaurant are on-site and open year round. Explore a two-hour self-guided loop and keep an eye out for flocks of sheep. Independent access to the Valley is limited; vehicle and horseback tours led by Navajo guides can be arranged. The park is open 8am - 5pm with extended summer hours. Park entry is \$20 (per vehicle with up to 4 people) and \$6 each additional person. Native Americans and children 9 and under are free. The Valley is located 131 miles west of Farmington. Hwy. 64 to Hwy. 160 and north on Hwy. 163 at Kayenta, AZ.

SALMON RUINS & HERITAGE PARK

6131 Hwy. 64, Bloomfield, NM
(505) 632-2013
salmonruins.com

Salmon Pueblo, one of the largest outlying colonies of Chaco Canyon, was built in the Chacoan architectural style during the 11th century. The museum's exhibits display prehistoric pottery and other fascinating artifacts, such as Navajo and Spanish cultural items. Heritage Park is comprised of replica dwellings and habitations forming a "timeline of San Juan Basin history." A self-guided interpretive trail provides a leisurely walk through the Salmon Ruins and Heritage Park. A picnic area is available. Salmon Ruins and Heritage Park are open daily 8am - 5pm; November through March, Sunday hours are noon - 5pm. Admission is \$4 per adult, \$3 per senior, \$1 per child 6 - 16, children under 6 are free. Located 10 miles east of Farmington on Hwy. 64.

WINES OF THE SAN JUAN VINEYARD WINERY & TASTING ROOM

233 Hwy. 511, Blanco, NM
(505) 632-0879
winesofthesanjuan.com

The Southwest is within our soul and you will experience it firsthand upon visiting Wines of the San Juan. The winemaker showcases his drive to be true to the region through robust, fruit forward wines that enliven the senses. The styles of wine produced are diverse, from bold and serious to fun and light hearted. Experience internationally awarded wines in the shady courtyard where picnic lunches are encouraged. Located 30 minutes east of Farmington in the San Juan River Valley. Open Daily 10am - 5pm, Sundays noon - 5pm, Closed Tuesdays. Open for extended summer hours.





BIKING

Mountain bike trails are abundant throughout San Juan County and offer riders a great chance to experience the beauty and scenery of the high desert plains. In October, the **Road Apple Rally** calls mountain bikers to Farmington for the longest consecutive running mountain bike race in North America. This course features a thrilling 15 mile course for pros and amateurs and features open use trails in the Glade Run Recreation Area. Access the Road Apple Rally course from Lions Wilderness Park, College Blvd. north of Pinon Hills Blvd. Another popular mountain biking trail in Farmington, **Kinsey's Ridge**, sits at the end of Foothills Drive. This 6 mile trail offers rolling hills and a great view. **Pinon Mesa**, located 3 miles north of Main Street on Hwy. 170, offers distinctive trails with a variety of terrain. The trailhead is marked by a large cottonwood on the west side of the highway. Aztec hosts the **Alien Run** mountain bike race, featuring a section of trails known as Alien Run. Access from Hart Canyon, 4 miles north of Aztec on US Hwy. 550, then east on CR 2770. This trail is for mountain bikes only and has great single track. For information on additional trails, call (800) 448-1240 or the Farmington BLM Field Office (505) 564-7600 or (800) 842-3127.

QUALITY WATERS AND THE SAN JUAN RIVER

The world famous "Quality Waters" is all catch and release, beginning .25 miles downstream from Navajo Dam. Quality Waters runs a little over 3.75 miles below the dam and consists of runs and riffles teeming with rainbow, brown and cutbow trout. This Special Trout Waters section is posted with NO daily bag limit. Anglers may only fish up to 2 single barbless hook, fly or lure and one rod at a time. Year-round fishing is available on all sections of San Juan River with an additional 6 miles of open waters below Cottonwood Campgrounds.

MAJESTIC ENCHANTMENT

221 Hwy. 511, Blanco, NM
(505) 801-9163

majesticenchantment.com
Enjoy year-round fly fishing for trophy german brown and rainbow trout along this privately owned section of the San Juan River. Bring the family and visit the disc golf course and Southwestern Art Gallery.

NAVAJO LAKE

36 Road 4110 Unit 1
Navajo Dam, NM
(505) 632-2278

Navajo Lake is the second largest lake in the state and has 150 miles of shoreline containing trout, kokanee salmon, large northern pike and a host of other warm water species. Two full-service marinas, two full boat docks, boat rentals and multiple campgrounds are available. See pg. 15

Cast a line into world-class trout waters on the San Juan River, enjoy fishing from a boat at Navajo Lake or boat and shore fish at Lake Farmington.

FOR PERMIT INFORMATION CONTACT THE
NM GAME AND FISH DEPARTMENT.
(505) 476-8000, WILDLIFE.STATE.NM.US

LAKE FARMINGTON

Main Street/NM 516
(505) 599-1400

Open for shoreline fishing year-round, this 250 acre lake is open to fishing rainbow trout, largemouth bass, catfish, and pike. Non-motorized and electric motor boating is allowed with boat inspection onsite, May through September.

JACKSON LAKE

436 Hwy 170, Farmington, NM
(505) 476-8000

Jackson Lake is located 5 miles north of Farmington, on west side of NM 170 (La Plata Highway). Access to the lake is by foot only, 1/4 mile hike from parking lot. Species include catfish, bluegill and bass.

MORGAN LAKE AND CUTTER DAM RESERVOIR
(928) 871-6451

nndfw.org

Located on the Navajo Reservation, just outside of Farmington, both lakes are open year-round. Morgan Lake is 20 miles west of Farmington. Species include largemouth bass, channel catfish and bluegill. Cutter Dam Reservoir, 26 miles east of Farmington, has rainbow trout, brown

trout, and kokanee salmon. A Navajo Nation fishing permit is required for both lakes. Boats must have a Navajo watercraft permit. Contact the Navajo Fish and Wildlife Department for information.

GUIDES & OUTFITTERS

ARCOM OUTFITTING & GUIDE

3802 Windsor Dr.
Farmington, NM
(505) 860-2325
martinez_art@hotmail.com
arcom-fishing-hunting.com
sanjuanriverfishingguides.com

SOARING EAGLE LODGE

#48 CR 4370,
Navajo Dam, NM
(505) 632-3721
(800) 866-2719
info@soaringeaglelodge.net
soaringeaglelodge.net



PIÑON HILLS

2101 Sunrise Pkwy.
Farmington, NM
(505) 326-6066
piñonhillsgolf.com

Municipal course, regulation 18-hole. Rated by Links Magazine as the #2 Municipal Golf Course in the US and #7 by Golfweek, Piñon Hills remains one of the best bargains in golf.



FarmingtonNM.org
#joltyourjourney

**CIVITAN MUNICIPAL**

2200 N. Dustin
Farmington, NM
(505) 599-1194
fmtn.org

Par 3 course.

AZTEC MUNICIPAL AT HIDDEN VALLEY

29 Road 3025
Aztec, NM
(505) 334-3248
hiddenvalleygolfclubnm.com
Regulation 18 hole.

RIVERVIEW

#64 Road 6520
Kirtland, NM
(505) 598-0140
riverviewgolfnm.net
Regulation 18 hole.

SAN JUAN COUNTRY CLUB (Private)

5775 Country Club Dr.
Farmington, NM
(505) 327-4451
sanjuancountryclub.org
Regulation 18 hole, offers reciprocity.

DISC GOLF LIONS WILDERNESS PARK

(505) 599-1400

Located at 5700 College Blvd at Sandlewood offering 27 holes. The front 9 is short, scenic, sandy slickrock with piñons, junipers and good elevation changes. The middle 9 are longer and more difficult with denser trees in spots with the back 9 even longer.

MAJESTIC ENCHANTMENT

(505) 801-9163
majesticenchantment.com

Located on the San Juan River offering 18 holes. Call for pricing.

SAN JUAN COLLEGE DISC GOLF

(505) 566-3221

Located behind the San Juan College Health and Human Performance Center, offers 9 holes overlooking breathtaking southwest vistas and a series of challenging holes that range from easy to moderately difficult.

WATER SPORTS LAKE FARMINGTON

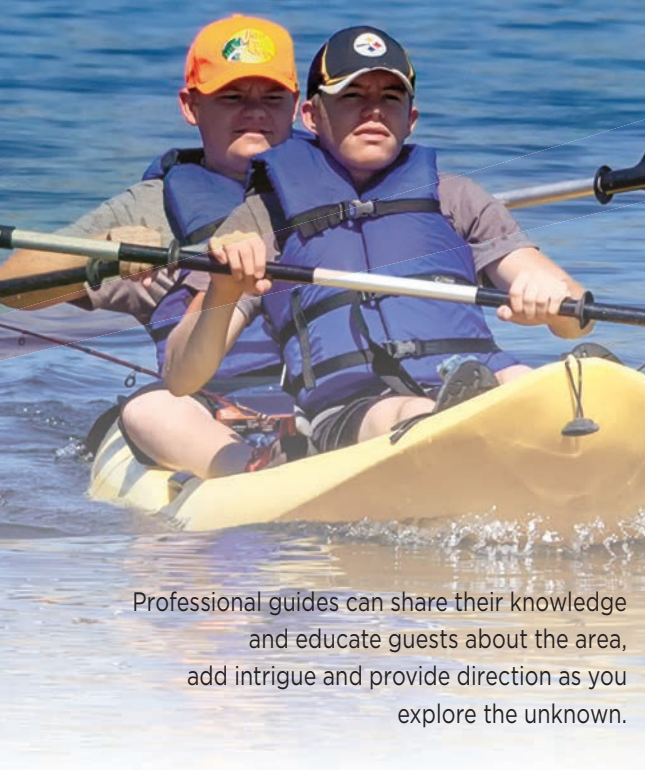
Main Street/NM 516
(505) 599-1400

Kayaking and paddle boarding are among the activities available. Swimming is not permitted.

MORGAN LAKE

(928) 871-6451
nndfw.org

This lake offers fantastic windsurfing and boating opportunities. Morgan Lake is located 20 miles west of Farmington. Watercrafts are required to have a Navajo Nation watercraft permit, and anglers must have a Navajo Nation fishing permit. Swimming is not permitted. Contact the Navajo Nation Department of Fish and Wildlife for information.



Professional guides can share their knowledge and educate guests about the area, add intrigue and provide direction as you explore the unknown.

GUIDED TOURS

JOURNEY INTO THE PAST TOURS

(505) 632-2013

sreducation@sisna.com
chacotours.org

This company offers tours of Chaco Canyon, Dinétah areas and the Bisti Badlands. Customized tours can be built. Let a local expert enhance your walk through history.

MILD TO WILD RAFTING & JEEP TRAIL TOURS INC.

(800) 567-6745 or

(970) 247-4789

mild2wildrafting.com

20+ years the adventure and whitewater experts, Mild to Wild, offers individual and group trips for team building, incentive, corporate, youth groups and family reunion trips.

MOUNTAIN WATERS RAFTING

(800) 337-8199 or

(970) 259-4191

durangorafting.com

NAVAJO AGRICULTURAL PRODUCTS INDUSTRY (NAPI)

(505) 566-2600

navajopride.com

Tours of the processing plant. See pg. 41

PNM SAN JUAN GENERATING STATION

(505) 598-7281

Coal-fired power plant tours.

THE OUTDOOR EQUIPMENT RENTAL CENTER AND REPAIR SHOP

4601 College Blvd.

Farmington, NM

(505) 566-3221

sanjuancollege.edu/oerc

Available to the public: rent camping and sporting equipment including mountain bikes, tents, backpacks, sleeping bags, stoves, whitewater rafts, stand-up paddleboards, canoes, kayaks, skis, snowshoes and more at unbeatable prices. Have your mountain bike, road bike, snowboard or skis serviced by a certified technician. Hours are Monday - Friday 2pm - 7pm, Saturday 8am - 1pm. Closed Sundays.

OUTDOOR RENTALS

NAVAJO LAKE STATE PARK

See pg. 19

NAVAJO LAKE MARINA

#42 CR 4110, Navajo Dam, NM

(800) 582-5687

navajomarina.com

SIMS MARINA


(505) 320-0885

(505) 320-0059

OFF-ROADING

World Class Off-Roading! That is very easily the quickest way to classify both non-motorized and motorized off-roading in the Farmington area. From national championship level rock crawling and jeeping, to fast sandwashes and technical single-track and OHV trails, it is all right here. Come see why we love the outdoors around Farmington and why this area is quickly becoming the hottest off-road trail center. Bring your mountain bike, ATV/SXS, jeep, motorcycles or rock buggy; adventure is waiting around the corner.





From the famous Chokecherry Canyon trails of the Glade Run Recreation to the Dunes Recreation Area, you can discover miles of cool terrain to explore no matter your vehicle of choice. Discover why off-roading clubs across America voted Farmington's Chokecherry Canyon, a system of trails in the Glade Run Recreation Area, as #1 in New Mexico in the 2015 Parts Catalog Best Trails in America survey.

Are you into jeeping and 4X4 technical trails? The Glade has some of the best, having hosted multiple National Rock Crawling Championships over the years. In fact, this is the playground in which several world class off-roading racing champions train and play. The sandstone formations lend to some epic trail runs.

Or would you rather take a leisurely trail ride in a side-by-side OHV? There are many miles of trails throughout the Glade, giving great views of the surrounding iconic landscapes. How about a spirited motorcycle ride? Choose from the fast single-track ridgelines of the Glade or test your skills and endurance in the Dunes Recreation Area, which hosts several regional and state motorcycle competitions throughout the year.

CHOKECHERRY CANYON / GLADE RUN RECREATION AREA

Farmington BLM (505) 564-7600, (800) 842-3127

blm.gov/nm

Comprised of over 19,000 acres, the terrain found in the Glade Run Recreation Area varies. The famous Chokecherry Canyon trails can be accessed by turning onto Glade Road (County Road 1980) from Pinon Hills Blvd. Special use zones exist within the Glade, visit the BLM Farmington Field Office for the most current Glade Run Recreation user group maps.

DUNES RECREATION AREA

Farmington BLM (505) 564-7600, (800) 842-3127

blm.gov/nm

Over 800 acres of terrain shaped perfectly for motorcycle and ATV enthusiasts sits just 1.5 miles south of Farmington on Highway 371. Test your skills on large sand dunes, sandy arroyos and seemingly endless trails at the Dunes. Locals love to challenge themselves year-round at "The Bowl", located at the park entrance. This nook surrounded by dunes, is ideal for riders and spectators alike.

Article by local off-road enthusiast Darryl Dunlap.

Dunlap Performance & Motorsports, LLC

1812 Schofield Lane, Farmington, NM

(505) 258-4376

dunlapracing.com



Personalized Healthcare...

Whenever you see the SJRMC name, you have the assurance of high-quality, personalized care.

It's our mission.

- Level III Trauma Center • Air Ambulance • Regional Heart Center
- Regional Cancer Center • Spine Center • Rehabilitation Hospital
- Nephrology • Total Joint Program • Obstetrics • Midwifery Services



**SAN JUAN REGIONAL
MEDICAL CENTER**

801 West Maple Street | Farmington, New Mexico | 505.609.2000 | sanjuanregional.com



Welcome to the
Hampton Inn & Suites
in Farmington, NM, where nature,
history, and culture connect

Spacious new lobby and atrium
Indoor pool • Hot breakfast
WiFi • Gym/fitness center
Group rates and packages available

505.564.3100

1500 Bloomfield Boulevard
Farmington, New Mexico 87401



2015 CERTIFICATE OF EXCELLENCE



CLIMBING WALL

ROCK CLIMBING WALL SAN JUAN COLLEGE HEALTH AND HUMAN PERFORMANCE CENTER

4601 College Blvd.

(505) 566-3487

sanjuancollege.edu/oerc

A three-dimensional indoor climbing wall is available for beginners, intermediate and advanced climbers. The climbing wall has 6,000 sq. ft. of climbing and features 17 top rope stations, 12 lead climbing lines, 2 roofs, a running crack and a 600 sq. ft. bouldering cave. The cost is \$7/day pass. Hours are Mon. - Thurs., 11am - 8:30pm, Fri., 11am - 8pm, Sat., 10am - 2pm, and closed Sundays.

FARMINGTON MAP

CLIMATE

Temperatures range from winter lows in the teens to summer highs in the 90s

Average sunny days:

273

Average snowfall:

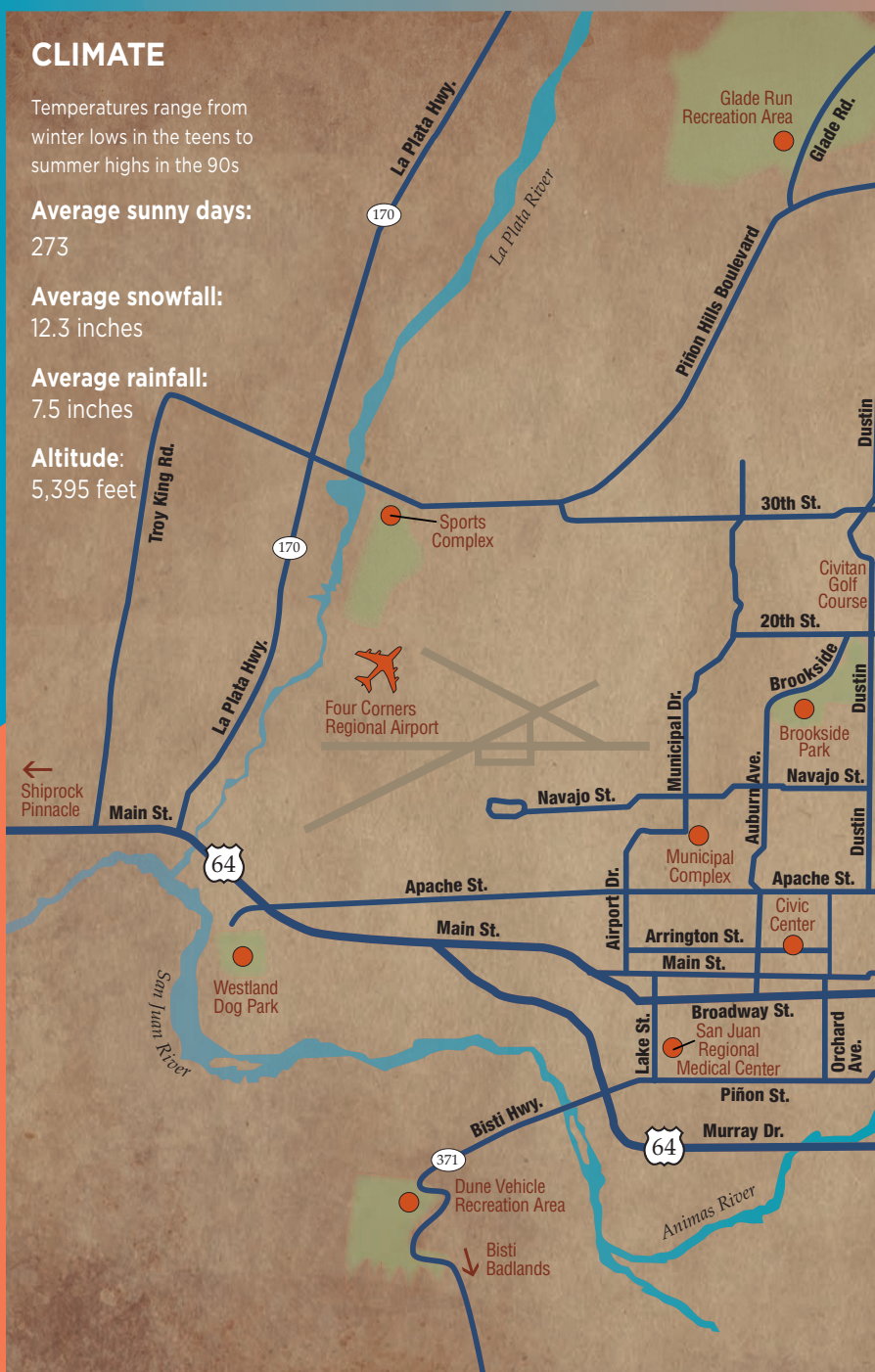
12.3 inches

Average rainfall:

7.5 inches

Altitude:

5,395 feet





Create Your Memories



FROM OUR CORNER OF THE WORLD.



STRATER HOTEL
DURANGO, COLORADO

HISTORIC HOTELS
of AMERICA

NATIONAL TRUST FOR HISTORIC PRESERVATION

TRIPADVISOR CERTIFICATE OF EXCELLENCE



World-class Dining



Victorian Décor



Unique Guestrooms

Experience the splendor of Victorian elegance and Old West beauty at the historic Strater Hotel located in the heart of downtown Durango.

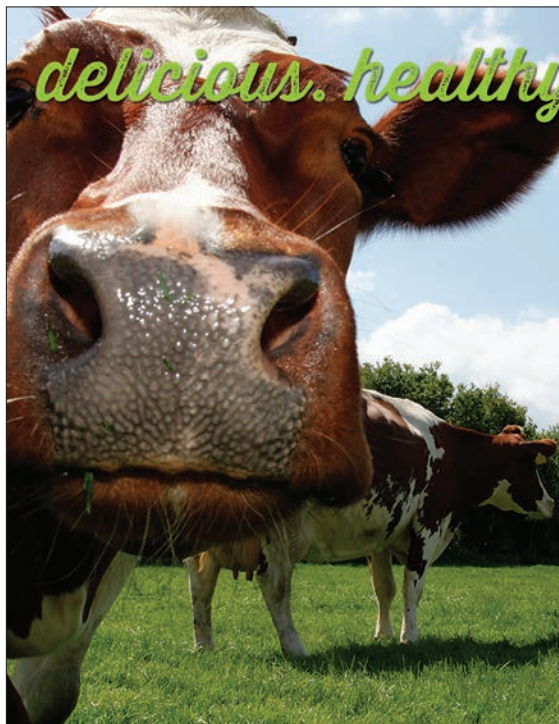


STRATER

CATERING & EVENTS



800.247.4431 | Strater.com | Durango, Colorado



delicious. healthy. natural.

we strive to provide the
highest quality
natural and organic products



locally grown

FAMILY OWNED

EST. 1993

save on hundreds of
your favorite products
every day at Nature's Oasis.

thank you for *shopping local*

970.247.1988

300 S. Camino del Rio | Durango, CO
NaturesOasisMarket.com

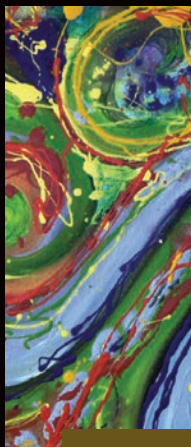
karen.ellsbury



classes/parties



patrick.hazen



events

Studio **116**

art • photography • jewelry

116 West Main • 505-801-5889 • www.karenellsbury.com



BEST JAPANESE
SUSHI & STEAK HOUSE
IN NEW MEXICO



 **TOMO**

JAPANESE SUSHI & STEAK HOUSE

3500 E. Main St., Farmington, NM 87402 505-278-8486

www.tomofarmington.com

FAMILY ADVENTURES

FARMINGTON PARKS

FAMILY FUN ACTIVITIES

AQUATIC CENTER

BOWLERO LANES
& BATTER-UP

TENNIS COURTS

FARMINGTON
RECREATION CENTER

ROCK CLIMBING WALL

E3 CHILDREN'S
MUSEUM & SCIENCE
CENTER

RIVERSIDE NATURE
CENTER

SUTHERLAND
FARMS

DURANGO &
SILVERTON NARROW
GAUGE RAILROAD



Farmington is perfect for active families. Whether you like to climb a rock wall, hike the river corridor, visit a museum, or swim, Farmington is the place for family fun. Named “The Official Best Family Getaway in New Mexico – 2013,” we invite you to explore our corner of the world. Additional family, outdoor adventure opportunities, including national parks and museums can be found on pg. 43 - 45 or by visiting our website at FarmingtonNM.org.



FarmingtonNM.org
[#playfarmington](https://twitter.com/playfarmington)

CREATE LASTING MEMORIES



FARMINGTON PARKS

Farmington features more than 70 parks, each offering a unique outdoor activity. From riverside nature trails, dog parks and playgrounds to skateboarding and tennis courts, Farmington has a park for all interests. Enjoy disc golf at the Lions Wilderness Park course or explore the Animas River Trails through Animas and Berg Parks.

VISIT FMTN.ORG/PRCA FOR A COMPLETE LISTING OF THE PARKS AND THEIR AMENITIES OR CALL PARKS RESERVATIONS AT (505) 599-1400.

BERG PARK FOUNTAIN

Scott Ave & San Juan Blvd.

Kids of all ages will enjoy this outdoor interactive spray pad. Located on the corner of Scott Ave. and San Juan Blvd. Smaller spray pad at Orchard Park.

THE RIVER CORRIDOR

Browning Parkway

Over 8 miles of woodland, riverside and nature trails weave through Animas, Berg, Boyd and Westland Parks. These trails are ideal for jogging, walking, bicycling, bird and wildlife watching and horseback riding. Two pedestrian bridges cross the Animas River with several observation areas. A picnic

area with grills is also available. Park access available off Browning Parkway south of the Animas River in Animas Park, and at Scott Avenue and San Juan Blvd. in Berg Park, near many local hotels.

ALL VETERANS MEMORIAL PLAZA

Tucker Avenue

This park, located along the banks of the Animas River, recognizes the contributions of all American veterans - past, present and future. The intent of this memorial park is not only to honor our veterans, but also to educate those visiting the memorial. Located at Cobble Center on the River

Corridor at the end of Tucker Avenue, just off San Juan Blvd.

VIETNAM VETERANS PARK

North Butler Steet

Located south of Carlton Street, a memorial plaza within the park includes inscriptions in black granite to honor soldiers missing or killed in action (from the Four Corners area) during the Vietnam War. The qualifying areas for representation are Apache County, AZ; Montezuma and La Plata County, CO; San Juan County and McKinley County, NM; and, San Juan County, UT. The park contains a picnic shelter and playground.

CONNECT YOUR VACATION WITH THE WORLD: #JOLTYOURJOURNEY

FAMILY FUN ACTIVITIES

AQUATIC CENTER

1151 N. Sullivan Ave.
Farmington, NM
(505) 599-1167

The Aquatic Center features an indoor Olympic-size pool with one three-meter and two one-meter diving boards, children's playground and a 150-foot triple loop water slide. Open year-round.

BOWLERO LANES & BATTER-UP BATTING CAGES

3704 E. Main St.
Farmington, NM
(505) 325-1857
bowlerooffarmington.com

Bowlero Lanes offers hours of affordable entertainment, perfect for active families looking to build memories. Bowling alley is open seven days a week and offers dining and games. Batting cages open April through August. Call for rates and hours.

TENNIS COURTS

2301 W. Pinon Hills Blvd.
Farmington, NM
(505) 325-7936
fmtn.org/prca

There are 22 lighted courts in Farmington, the jewel being the national award-winning tennis courts at the Farmington Sports Complex with eight lighted courts. A Pro shop is open from Memorial Day to Labor Day, supervised by a USPTA certified teaching pro.



#PLAYFARMINGTON

#STAYFARMINGTON

FARMINGTON RECREATION CENTER

1101 Fairgrounds Rd.

Farmington, NM

(505) 599-1184

fmrn.org

Five racquetball courts available for hourly reservations or drop-ins Monday through Saturday. Wallyball courts, full size gym, Jazzercise, ZUMBA, family events and summer kids' programs are available.

ROCK CLIMBING WALL

See pg. 25

E3 CHILDREN'S MUSEUM & SCIENCE CENTER

302 N. Orchard

Farmington, NM

(505) 599-1425

farmingtonmuseum.org

The museum offers hands-on science related interactive exhibits and role playing areas in the main gallery with special programs scheduled throughout the year. The Tot's Turf gallery is a developmentally appropriate environment for children 5 and younger. Open Tuesday - Saturday, 10am - 5pm.

RIVERSIDE NATURE CENTER

Browning Pkwy.

Farmington, NM

(505) 599-1422

farmingtonmuseum.org

See pg. 46

SUTHERLAND FARMS

745 Road 2900, Aztec, NM

(505) 334-3578

sutherlandfarms.net

This is a family-owned working produce farm and country market. Special events are held throughout the year. The produce market is open Monday-Sunday 10am - 5pm July-October.

DURANGO & SILVERTON NARROW GAUGE RAILROAD

479 Main Ave. Durango, CO

1-888-TRAIN-07

durangotrain.com

This historic coal-fired, steam-powered, narrow gauge train travels through the wilderness of the San Juan National Forest between Durango and Silverton in southwestern Colorado. Trains run daily from early May to late October. Winter trains run Thanksgiving through early May. See pg. 45




~ VISIT OUR FREE ~
OLD WEST INDIAN MUSEUM

BIG ROCK TRADING POST

Large selection of Indian Jewelry
 General Merchandise
 Pawn · Propane

505-598-5184
3761 US HIGHWAY 64
WATERFLOW, NM 87421
 12 miles west of Farmington

Experience
 the
 ancients...
 in the
 heart of
 Indian
 Country



SALMON RUINS

Museum, Library, & Research Center



- 11th CENTURY PUEBLO
- PIONEER HOMESTEAD
- GUIDED TOURS
- GIFT SHOP, PICNIC AREA

OPEN: MON-FRI 8-5 • SAT-SUN 9-5
 NOV-APRIL SUNDAY HOURS: 12-5

505-632-2013
WWW.SalmonRuins.com

2 Miles West of Bloomfield, NM on Hwy 64



AZTEC, NEW MEXICO

Your Four Corners Playground
 (Since 1100 A.D.)

Aztec Ruins National Monument | 300 Natural Sandstone Arches | Aztec Municipal Golf Course
 Fly Fishing on the Quality Waters of San Juan River | Navajo Lake State Park
 Mountain Bike Trails | Renowned Alien Run | Ancestral Pictographs, Pueblitos & Petroglyphs





(888) 543-4629 | AztecNM.com

FOUR CORNERS AREA MAP



Wal-Art Gallery

where image and design meet style



Your treasured memories and memorabilia
custom framed and ready to display



Custom Framing • Pre-Framed Art
Pottery • Jewelry • Home Accents • Wall Decor

www.WalArtGallery.com
422 W. Main St. Farmington 505.327.3336
in beautiful Downtown Farmington

CULTURAL ADVENTURES

NAVAJO DINÉ
HOPI
SOUTHERN UTE
UTE MOUNTAIN UTE
JICARILLA APACHE
NATIONAL PARKS
MUSEUMS
GAMING
ARTS AND ENTERTAINMENT
SHOPPING

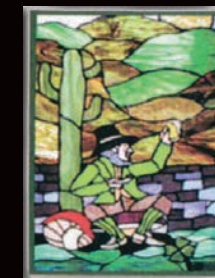


Immerse yourself in a land steeped in culture and history – homeland to the Navajo, Jicarilla Apache, Southern Ute, Ute Mountain Ute and Hopi people. Walk the path of ancients, as you tour five national parks and monuments. Explore art galleries, museums, shops and performance centers to experience how the history and cultural diversity of the area has shaped our community.



FarmingtonNM.org
#joltyourjourney

CLANCY'S IRISH CANTINA



Green Chile Cheeseburger
"Best Burger in NM"
– The Food Network

Steak
Sushi Bar
Gourmet
Hamburgers
Family Dining
Seasonal Patio
Local Live Music
Free Internet
Catering

505.325.8176 • Clancys.net

2701 E. 20th Street Farmington

Outstanding Northern New Mexico Cuisine

Voted #1
Mexican Restaurant



Now Serving Breakfast
Saturday & Sunday 7-10:30 AM

Mon-Thurs 10:30 am-9 pm Fri 10:30 am-10 pm
Open Sat 7 am-10 pm Sun 7 am-9 pm

Si Señor Mobile ~ NOW OPEN!
Mon-Fri 6-10 am • Serving BREAKFAST BURRITOS
and BISCUIT SANDWICHES

Visit us online for your next catering:
www.SiSeñorFarmington.com

505-324-9050

4015 E. 30th St., Farmington

CONTINUING A TRADITION OF THE FINEST NATIVE AMERICAN ARTS AND CRAFTS



Wholesale and retail Navajo Rugs, Turquoise Jewelry,
Pottery, Sculpture, Sandpaintings and other unique
American Indian arts and crafts

SHIPROCK TRADING POST
Kent and Hillary Morrow
527 E. Main St.
Farmington, NM 87401



505-324-0881 tel
505-324-0882 fax
info@shiprocktradingpost.com
www.shiprocktradingpost.com



IMMERSE YOURSELF... PEOPLE, ART, CULTURE AND HISTORY



NAVAJO DINE The Navajo Nation is the largest Native American Nation in the country, with roughly a third of the population living in New Mexico. The majority of the Navajos live in Arizona and a small cluster reside in Southern Utah. Window Rock, Arizona, next to the Arizona/New Mexico border, is the Nation's capital. Navajoland is in the northwest corner of the state and is surrounded by magnificent land formations, breathtaking views, distant biking and great fishing. There are several fishing lakes, the San Juan River and hunting for deer, turkey, bear and small

game is also permitted. The Northern Navajo Nation Fair is held in Shiprock, NM every year in early October featuring an abundance of fresh farm products, four-mile parade, rodeos, Indian dancing and an Indian Market as well as the first fall sacred Night Chant Ceremony. Visitors travel many miles for sacred Navajo ceremonies such as the Night Chant and Mountain Way Chant. Northwestern New Mexico is also a great place to purchase Navajo tapestries, silverwork, pottery, paintings and baskets that have gained worldwide recognition. Area shops and trading posts specialize in the beautiful artwork created by local Native American artists. For information on visiting the Navajo Nation contact:

NAVAJO TOURISM

PO Box 663
Window Rock, AZ 86515
(928) 810-8501
discovernavajo.com

NAVAJO PARKS & RECREATION DEPARTMENT

(928) 871-6647
navajonationparks.org
Tribal Park guidelines, camping and hiking.

NAVAJO FISH & WILDLIFE DEPARTMENT

Window Rock, AZ
(928) 871-6451
nndfw.org

Fishing and hunting on the Navajo Nation.

NAVAJO AGRICULTURAL PRODUCTS INDUSTRY (NAPI)

(505) 566-2600
navajopride.com

Established in 1970, NAPI is the Navajo Nation's farming and agribusiness enterprise, responsible for farming Navajo Indian Irrigation Project (NIIP) lands. Approximately 76,000 of the planned 110,630 irrigable acres are developed. Crops include pinto beans, potatoes, alfalfa and grains. NAPI products are marketed throughout the United States and other markets under "Navajo Pride." Call for guided tours.

HOP Though completely surrounded by the Navajo reservation, the Hopi people have a distinctly different history from their neighbors. The major Hopi villages are located at the top of three mesas in northeastern Arizona. Each village is independent, practicing its own style of government. All Hopi villages have gifted artisans.

A LAND OF CULTURAL DIVERSITY

First Mesa people are known for their Hopi polychrome pottery. Second Mesa people specialize in Hopi silver overlay jewelry and coiled basketry. Third Mesa people produce works of wicker and twill basketry. Visitors are welcome. Touring of Hopi lands requires a Hopi or Tewa Guide. Inquire about guides at the local shops, or at the Hopi Cultural Center located on Second Mesa. Photography, sketching, videotaping and sound recording are prohibited by Hopi law. If visitors are allowed to witness a Hopi ceremony, they should be respectful and questions regarding the sacred event are discouraged.

HOPi VISITORS CENTER

**PO Box 67,
Second Mesa, AZ 86043
(928) 734-0044
explorehopi.com**

Headquartered in Ignacio, CO, the Southern Ute Indian Tribe's capital. Rich in culture and history, the Utes create handcrafted bead work, baskets hide painting, leather work, and pottery.

THE SOUTHERN UTE CULTURAL CENTER AND MUSEUM

**(970) 563-9583
southernutemuseum.org
succm.org**

Located just north of Ignacio, CO, in the Southern Ute Indian tribe's capital. Ancient artwork, artifacts and photographs are exhibited at the center. It is a great source for information about the history, artwork and events of the Southern Ute tribe. Ceremonies open to visitors include the social Bear Dance celebrated in May, and the more spiritual Sun Dance held in July.

Centered around their tribal capital in Towaoc, CO, the Ute Mountain Ute have created a sound economy based on tourism and natural resources. The tribe celebrates its annual Bear Dance in June. Visitors welcome.

**UTE MOUNTAIN UTE
(970) 565-9653 or
(970) 565-3751 ext. 330
utepark@fone.net
utemountainute.com**

THE UTE MOUNTAIN TRIBAL PARK

**(970) 565-9653 or
(970) 565-3751 ext. 330
utemountaintribalpark.info**

A special outdoor primitive experience featuring several hundred archaeological sites that are part of the Mesa Verde ruins. Day tours, short tours and camping are available. Visitors should be prepared with food and water.

JICARILLA APACHE

Dulce, NM, the capital of the Jicarilla Apache Reservation, is 80 miles east of Farmington on Hwy. 64. The reservation features some of the largest antlered mule deer on the continent. The tribe maintains a large hunting, fishing and outdoor recreation operation in the beautiful northern New Mexico wilderness. Special events include the Little Beaver Celebration the third weekend in July, Pony Express race, and the annual Go-Jii-Ya feast at Stone Lake, 18 miles south of Dulce. The Museum of Arts and Crafts displays beadwork, basketry, pottery and painting and offers artisan demonstrations. For hunting and fishing information call (575) 759-3255.

JICARILLA APACHE NATION

**PO Box 507, Dulce, NM 87528
(575) 759-3242
jicarillaonline.com**

SOUTHERN UTE

The National Parks Service will turn 100 on August 25, 2016, and throughout the year national parks and monuments will be celebrating. Set out to “Find Your Park” and join the centennial celebration. Visit nps.org/2016 to learn more.

Farmington is the perfect home base to tour these five American treasures.

AZTEC RUINS NATIONAL MONUMENT

**725 Ruins Road, Aztec, NM
(505) 334-6174
nps.gov/azru**

From A.D. 1050 to 1300, the ancestors of the modern-day Pueblo people constructed and used a monumental network of public and ceremonial structures, roadways, multi-storied great houses and smaller residential buildings. The community functioned as a center for trade, as well as public and ceremonial events. Visitors can step into the Great

Kiva, reconstructed in 1934, which is the only reconstructed building of its kind. The monument became a UNESCO World Heritage Site in 1987. A half mile self-guided trail winds through a large excavated Great House. There are also museum exhibits, a video and bookstore. A free Junior Ranger program is available where kids earn a badge for exploring the 900-year-old site. Hours are 8am - 6pm Memorial Day through Labor Day and 8am - 5pm the rest of the year, closed for Thanksgiving, Christmas and New Year's Day. Located 14 miles east of Farmington off Hwy. 516 on Ruins Road / Road 2900. Entrance fee is \$5/adult, children 15 and younger are free.



CHACO CULTURE NATIONAL HISTORICAL PARK

1808 CR 7950, Nageezi, NM
(505) 786-7014 ext. 221
nps.gov/chcu

Also known as Chaco Canyon, this area was a major regional center of Ancestral Puebloan culture from A.D. 850 to 1200. The park preserves the impressive remains of the Chacoan great houses, monumental public buildings whose planning and construction spanned hundreds of years. The finely crafted masonry, geometric layout of the building, the associated great kiva, earthen mounds and Chacoan “roads” are hallmarks of the magnificent Chacoan culture. A campground (49 sites with picnic tables and fire grates) is on-site, but no additional services are offered. A Visitor Center is open 8am - 5pm;

closed on Thanksgiving, Christmas, and New Year’s Day. Hiking trails are open 7am to sunset year-round. Cost is \$12 per car. Camping is \$15 per night. To reserve a camp site visit www.recreation.gov or call 877-444-6777. Travel 75 miles south of Farmington on Hwy. 550. From Hwy. 550, turn right on CR 7900. Travel 5 miles and take the turn onto CR 7950. Travel 16 miles, 13 of which are dirt roads that can become impassible in inclement weather. Call to ensure the road is passable. Drinking water is available at the Visitor Center.

HOVENWEEP NATIONAL MONUMENT

McElmo Canyon Road
Cortez, CO
(970) 562-4282
nps.gov/hove

Features five beautifully built ancient towers dating from A.D. 1200 to 1300. Built by the Ancestral Puebloan (Anasazi) people, the towers are square, circular and D-shaped dwellings. Hovenweep Castle,

part of the Square Tower Group, showcases the skillful masonry used over 700 years ago. Trails are open from sunrise to sunset. Camping is available. The Visitors Center is open daily from 8am - 6pm, hours change with the season.

MESA VERDE NATIONAL PARK

**No.1 Navajo Hill, Mesa Verde
National Park, CO**
(970) 529-4465
nps.gov/meve

This cultural park was designated a UNESCO World Heritage Site in 1978. Its mesa-top sites and cliff dwellings were built by the Ancestral Puebloans between A.D. 550 and 1300. The Visitor and Research Center, located by the park entrance, is open in summer from 7:30am - 7pm, fall and spring from 8am - 5pm, winter from 8:30am - 4:30pm. A museum is open year round 8am - 5pm with extended summer hours. The campground is open mid-May to mid-October. Park entrance is \$15 per vehicle Memorial Day through Labor Day, \$10 per vehicle otherwise, \$8 per person by foot, bicycle or bus, Memorial Day to Labor Day, otherwise \$5. Tickets are required for ranger-led tours to some cliff dwellings, and may be purchased in person and no more than two days in advance from the Visitor and Research Center, the campground ranger station, or the Colorado Welcome Center in Cortez, CO. Mesa Verde is located on Hwy. 160 near Mancos, CO, 75 miles north of Farmington.

NATURAL BRIDGES NATIONAL MONUMENT

HC-60 Box 1

Lake Powell, UT 84533

(435) 692-1234

nps.gov/nabr

Features three large naturally-carved sandstone bridges created when streams cut through canyon walls. The bridges, the Kachina, Owachomo, and Sipapu can be viewed by car or bicycle from a 9 mile scenic drive or by foot accessible by short, steep hiking trails 8.6 miles in length. Open year-round. Camping available.

BOLACK MUSEUMS AT B-SQUARE RANCH

3901 Bloomfield Hwy.

Farmington, NM

(505) 325-4275

bolackmuseums.com

B-Square Ranch is owned and operated by Tommy Bolack. Tours to the two following museums are free and offered by appointment on the hour. Walk-ins welcome, if room is available.

Museum of Fish & Wildlife

Visit one of the largest private collections of mounted animals in the world with over 2,500 specimens. This collection, from five continents, gives visitors a chance to view and appreciate the beauty in nature's animal kingdom.

Electro-Mechanical Museum

This impressive private collection depicts developments in the electric power, telephone, radio, communications, as well as oil and agriculture industries. Visitors can see the largest collection of insulators, a tank, Elvis' Cadillac, antique equipment and more.

DURANGO & SILVERTON NARROW GAUGE RAILROAD MUSEUM

479 Main Ave., Durango, CO

(970) 247-2733

durangotrain.com

Located in the heart of downtown next to the D&SNGRR depot, this museum features full-size locomotives, historic rolling stock, Durango's first motorized fire truck, railroad art and collectibles. Daily hours correspond with the depot's hours.

E3 CHILDREN'S MUSEUM & SCIENCE CENTER

See pg. 33

FARMINGTON MUSEUM

3041 E. Main St.

Farmington, NM

(505) 599-1174

farmingtonmuseum.org

Experience a wide variety of exhibits relating to the diverse history of the area's cultures, traveling exhibits and art shows. Lecture series, performances, workshops and special demonstrations are offered year-round. The museum store, Currents, features exhibit-related merchandise, books on

125 N. Main Aztec, NM

(505) 334-9829

aztecmuseum.org

Visit this historical museum and explore its many rooms filled with artifacts. Stroll through the Pioneer Village, 12 original and replicated structures dating from the 1880s. Outside exhibits feature oil and gas equipment, farm implements and historical machinery. Pioneer history is highlighted in photographs, archives, artifact exhibits and displays. Open May through September 10am - 5pm, Tuesday - Saturday.



local and regional interest, souvenirs, toys and educational materials. The San Juan County Growers' Market is held in the parking lot during summer and early fall. Check for seasonal hours. The museum is open Monday - Saturday, 8am - 5pm. Admission: suggested donation \$3 adults, \$2 children.

RIVERSIDE NATURE CENTER

**Browning Pkwy.
Farmington, NM
(505) 599-1422**

farmingtonmuseum.org

Observe birds and animals from large windows overlooking a wetland where food and water attract wildlife. Exhibits feature the plants and animals of the riverside with emphasis on historic uses and ecosystems. Outside herb and xeriscape demonstration gardens are located adjacent to the facility. The Center's hours vary by season and event. Located in Animas Park.

SAN JUAN COUNTY MUSEUM AT SALMON RUINS

**6131 US Hwy 64
Bloomfield, NM
(505) 632-2013
salmonruins.com**

The museum features a permanent collection of Ancestral Puebloan pottery, jewelry and fetishes, as well as replica tools and hunting equipment. Interactive displays, focusing on archaeological techniques, plus a children's area. Temporary exhibits explore cultures of the Four Corners region. The gift

shop offers jewelry, hand-crafted Navajo rugs, kachinas, books, posters and music. A self-guided interpretive trail provides a leisurely walk through the Salmon Ruins and Heritage Park. Hours: Monday - Friday 8am - 5pm, Saturday and Sunday 9am - 5pm. Admission: \$4 adults, \$3 seniors, \$1 children 6 - 16, under 6 free, located 10 miles east of Farmington on Hwy. 64.

GAMING FLOWING WATER CASINO

**2710 US 64, Shiprock, NM
(505) 368-2300**

flowingwaternavajocasino.com

Flowing Water has more winning, more variety and more excitement than ever before. With 11,000 square feet filled with 130 machines as well as fast, friendly dining. Located 27 miles west of Farmington. Managed by the Navajo Nation Gaming Enterprise. Hours: Sunday - Thursday 9pm - 1am, Friday and Saturday 9pm - 4am.

NORTHERN EDGE CASINO

**2752 Rd 36, Fruitland, NM
(505) 960-7000
(877) 241-7777**

northernedgecasino.com

Located 5 minutes southwest of Farmington, off US Hwy. 371. This casino is managed by the Navajo Nation Gaming Enterprise and features 750 slots, table games, poker room, food court and Cedar Bow Restaurant & Bar. Hours: Sunday - Wednesday 8am - 4am, Thursday - Saturday 24 hours.



THE SKY UTE CASINO RESORT

**14324 Hwy 172, Ignacio, CO
(800) 876-7017
skyutecasino.com**

Get in on the action 24/7 at Colorado's only resort and casino with over 45,000 square foot of gaming fun, live blackjack, poker, roulette, bingo and over 600+ high-tech slots. Enjoy 5 restaurants, 24 RV sites with full hook-ups, over 19,000+ square feet of convention and banquet space, a bowling center and putt-putt amenities. Sky Ute Casino Resort offers 140 luxury rooms and is next door to the Southern Ute Cultural Center and Museum. Located 73 miles northeast of Farmington on Hwy. 172 in Ignacio, CO.

SUNRAY PARK & CASINO

**39 Rd 5568, Farmington, NM
(505) 566-1200
sunraygaming.com**

Enjoy state-of-the-art slot and video machines along with



FUN RIGHT OUT OF THE GATE!

seasonal live horse racing and coast to coast simulcast horse racing every day. The restaurant offers a variety of food with great customer service. Watch sporting events on 50+ big screens while dining. The casino and restaurant open 7 days a week. Located just 20 minutes from the Farmington Airport and 45 minutes from the Durango Airport.

UTE MOUNTAIN CASINO HOTEL AND RESORT

300 Weeminuche Dr.

Towaoc, CO

(800) 258-8007

utemountaincasino.com

Four Corner's "Gateway to Colorado" offers gaming seven days a week and 90 plush hotel rooms and suites along with 800+ slot machines in Towaoc, CO. Enjoy craps, roulette, black-jack, poker and take part in high-stakes bingo. Kuchu's Restaurant is on site and an RV park with full hook-ups for RVs and tents is close to the casino.

ARTS & ENTERTAINMENT

See music and dance come to life in Farmington. Take in an indoor or outdoor theater performance, a symphony or performing arts event and plan to be amazed by the talent. Show schedules can be found at FarmingtonNM.org.

FARMINGTON CIVIC CENTER

200 W. Arrington

Farmington, NM

(877) 599-3331

fmrn.org/civiccenter

The Miriam M. Taylor Theater presents concerts and traveling Broadway productions throughout the year. Check out local art association shows in the exhibit balcony.

OUTDOOR SUMMER THEATER

5800 College Blvd

Farmington, NM

(877) 599-3331

fmrn.org/sandstone

Live theater under the magnificent New Mexico stars at the natural sandstone amphitheater at Lions Wilderness Park from mid-June to early August. Performances are Thursdays through Saturdays at 8pm. Concessions are available. Past performances have included *Annie Get Your Gun*, *Joseph and the Amazing Technicolor Dreamcoat*, *Grease*, *Footloose* and *Beauty & the Beast*.

SAN JUAN COLLEGE

4601 College Blvd

Farmington, NM

(505) 566-3430

sanjuancollege.edu/silhouette

The college sponsors the Silhouette Performing Arts series each year, offering the best in family entertainment. The Art Gallery, located in the Henderson Fine Arts Center, exhibits a wide variety of artwork year-round and offers free admission.

SAN JUAN SYMPHONY

Farmington, NM & Durango, CO

(970) 382-9753

sanjuansymphony.org

A 65-piece professional orchestra with musicians from the Four Corners region. The Symphony presents several concerts each year at the Henderson Fine Arts Center.

THEATER ENSEMBLE ARTS, INC

(505) 326-2839

This local theater group provides affordable, multicultural theatrical performances. TEArts strives to develop community interest and youth participation.



artifacts gallery

contemporary art
and fine crafts

Artifacts Gallery and The Studios
are located in historic downtown
Farmington. Over 40 local and
area artists are featured –
working in a variety of mediums.

NOW OPEN IN ARTIFACTS:



302 main espresso

Espresso Drinks • Drip Coffee
Cold Brew • Chai



the chile store

Chile Products from New Mexico
and the Four Corners

505-327-2907
302 e. main street
farmington, nm 87401

CLOSE TO THE RIVER. FAR FROM ORDINARY.

On the Animas River
Riverwalk trails
In-room spas, fireplaces
Indoor pool/fitness center
Meeting facilities
Golf packages
Free airport shuttle



*We look forward to welcoming you at
The Courtyard by Marriott*

505.325.5111
560 Scott Ave. Farmington, NM

BEST VALUE IN THE FOUR STATES!



Playable 351 Days a Year!
Call or Click for TEE TIMES

Short 10-Minute Drive
from Farmington
Covered Golf Cars
Fully Stocked Golf Shop
Driving Range
Practice Facilities
and

THE GRILL @ Riverview
*Great green chili cheeseburger –
only thing better is a double!*

505-596-0140
www.RiverviewGolfNM.com
Road 6520 #64, Off US Hwy 64
Kirtland, New Mexico 87417

RiverviewGolfNM





LIVE WELL.

Call today to
schedule your tour.



THE BRIDGE AT FARMINGTON

AN ASSISTED LIVING COMMUNITY

505.324.6200

1091 West Murray Drive
TheBridgeAtFarmington.com

62240



Unforgettable Food & Good Times ~ Award-Winning Beer ~

3 RIVERS BREWERY & EATERY

Handcrafted food
Lunch & dinner

3RB PIZZERIA

Fresh artisan pizza
& Mexican cuisine

THE TAP ROOM

Pool & music



The gem of Historic Downtown Farmington



505-324-2187



ThreeRiversBrewery.com
101-113 East Main St.
Farmington, NM



Success Matters SAN JUAN COLLEGE

- 100+ degree and certificate programs
- Bachelor's and master's degrees on campus
- Business training
- Fitness center
- Fine arts events
- Meeting rooms
- Face-to-face, online and hybrid classes



SAN JUAN COLLEGE



Like us on Facebook
facebook.com/sanjuancollege

www.sanjuancollege.edu | 505-326-3311
4601 College Boulevard • Farmington, NM 87402

Where Families
Come First
Desert View

FAMILY COUNSELING SERVICES

**TRAUMA TREATMENT • AT-RISK YOUTH
PARENTING • FAMILY THERAPY
SUBSTANCE ABUSE**

*Our therapists provide compassionate
and confidential guidance.*



505-326-7878

**6100 E. Main St., Farmington 87402
Mon-Thurs 8am-6pm • Fri 8am-noon**

Statewide Crisis Line:

1-855-NMCRISIS (662-7474)

www.MyDesertView.org

High Desert Comfort



Near San Juan College

Smoke-Free • Conferences

- Business Center
- Indoor Pool/Gym
- Free Hot Breakfast



505.325.9414

1951 Cortland Dr.

Near Piñon Hills Golf Course

Pet-Friendly • Outdoor

- Pool • Business Services
- Refrigerators & Microwaves



505.325.2626

555 Scott Ave.

www.ComfortSuites.com

www.ComfortInn.com

*Ribs, Brisket, Sausage, Chicken, Catfish
...and all the Fixin's that go with 'em!*



1700 E. Main, Farmington

- *Dine In*
- *Carry Out*
- *Catering*

the
Spare Rib
BBQ
COMPANY

Est. 1989

505.325.4800

THE Perfect THREESOME

HOT SLOTS

GREAT FOOD

Fast horses!



ON HWY 64

SUNRAY PARK & CASINO

505-566-1200

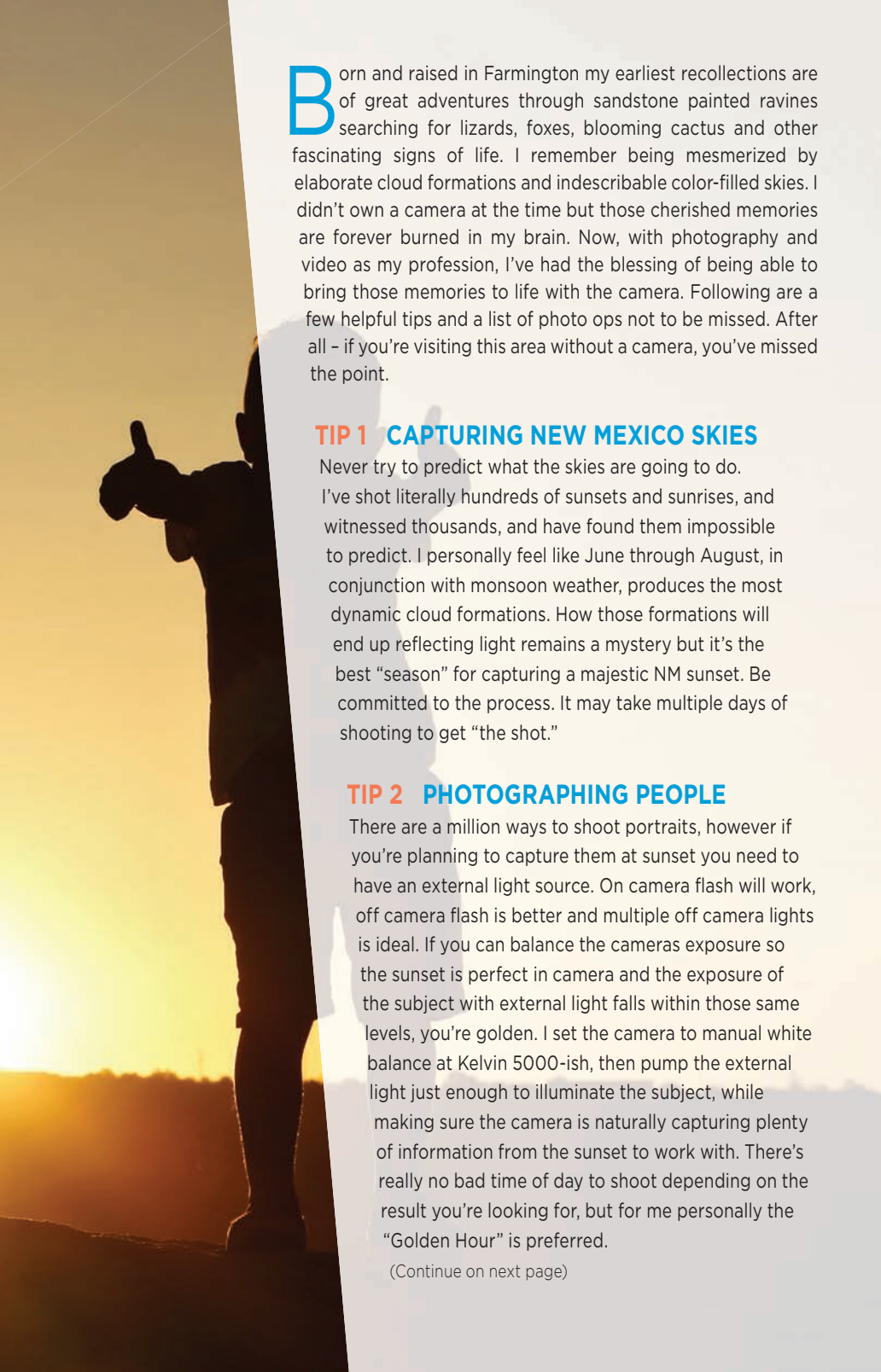
PHOTO TIPS & TOURS

Top Tips from a Professional Shutterbug

Paul & Katie McPherson

shutterfreak.com



A silhouette of a person standing on a dark, rocky outcrop, pointing their right index finger towards the horizon. The background is a bright, golden sunset sky with soft clouds. The person's shadow is cast onto the ground in front of them.

Born and raised in Farmington my earliest recollections are of great adventures through sandstone painted ravines searching for lizards, foxes, blooming cactus and other fascinating signs of life. I remember being mesmerized by elaborate cloud formations and indescribable color-filled skies. I didn't own a camera at the time but those cherished memories are forever burned in my brain. Now, with photography and video as my profession, I've had the blessing of being able to bring those memories to life with the camera. Following are a few helpful tips and a list of photo ops not to be missed. After all - if you're visiting this area without a camera, you've missed the point.

TIP 1 CAPTURING NEW MEXICO SKIES

Never try to predict what the skies are going to do. I've shot literally hundreds of sunsets and sunrises, and witnessed thousands, and have found them impossible to predict. I personally feel like June through August, in conjunction with monsoon weather, produces the most dynamic cloud formations. How those formations will end up reflecting light remains a mystery but it's the best "season" for capturing a majestic NM sunset. Be committed to the process. It may take multiple days of shooting to get "the shot."

TIP 2 PHOTOGRAPHING PEOPLE

There are a million ways to shoot portraits, however if you're planning to capture them at sunset you need to have an external light source. On camera flash will work, off camera flash is better and multiple off camera lights is ideal. If you can balance the cameras exposure so the sunset is perfect in camera and the exposure of the subject with external light falls within those same levels, you're golden. I set the camera to manual white balance at Kelvin 5000-ish, then pump the external light just enough to illuminate the subject, while making sure the camera is naturally capturing plenty of information from the sunset to work with. There's really no bad time of day to shoot depending on the result you're looking for, but for me personally the "Golden Hour" is preferred.

(Continue on next page)

TIP 3 DISCOVER SITES

Never be afraid to take adventures down unknown County Roads. I can't tell you how many old homesteads and incredible pieces of property I've stumbled on just rolling the dice on a hunch about a County Road. I call this "American Picker Style-Freestyle Photography." I can count on one hand the number of times people didn't let me on their property. This land is filled with some of the most hospitable people on the planet, who will welcome you into their world and share their views, if you're interested.

TIP 4 LENS CHOICE

If I could carry 3 lenses in my bag I would want to have a wide angle, a telephoto with a decent zoom range and a solid macro. As a Canon shooter, my lenses of choice would be the 14mm L f2.8, the 70-200 LII f2.8 and the 100mm L macro f2.8. Anything within those ranges will work just fine. If you have the budget to get into the 400mm+ range, you'll have endless opportunities especially with wildlife.

TIP 5 CELL PHONE SHOTS

Never settle for one shot. I take 15-20, if I want it to be a great one. Move around! Bend your knee, hold the phone over your head and more as all can affect the way the camera sensor auto-interprets light. Favorite apps: For landscape, HDR it is Snapseed, for lifestyle photos it is VSCO and PicTapGo.

SCENIC DRIVES

NAVAJO ROUTE 5 SCENIC ROUTE

Drive south of Farmington on Hwy. 371 for approximately 22 miles, turning west on Navajo Route 5 (signage will indicate Burnham). This stretch of road is just under 30 miles and provides many photogenic landscapes featuring elements of the Bisti Badlands, high desert plateaus and majestic land formations. In the horizon you will see Bennett Peak and Ford Butte with Shiprock Pinnacle in the background. The end of Navajo Route 5 is Hwy. 491. Turn north and travel 25 miles on the highway where you can either head west on Navajo Route 13 or continue on to the community of Shiprock.

NAVAJO ROUTE 13 SCENIC ROUTE

Navajo Route 13 passes over the Chuska Mountains to the community of Lukachukai, AZ. This pass is one of the most picturesque drives on the Navajo Nation with beautiful green pine trees, brilliant red sand and stone cliffs and provides a magnificent view of the Four Corners region from the top of the mountain. This pass is popular with photographers and locals as a favorite scenic drive.

NOT TO BE MISSED PHOTO OPS

ANGEL PEAK / KUTZ CANYON

With more than 10,000 acres of rugged terrain and a 7,000-foot peak in the form of an Angel, photographers love to explore this scenic area. Angel Peak is visible for many miles in any direction and is surrounded by the maroon, gray, and yellow mudstone and sandstone found in the Kutz Canyon badlands. Located 15 miles south of Bloomfield and 5.8 miles east of Highway 550. This landscape is a unique subject for photographers especially August through October when dramatic storm clouds roll across the plains. See pg. 15

THE BISTI BADLANDS

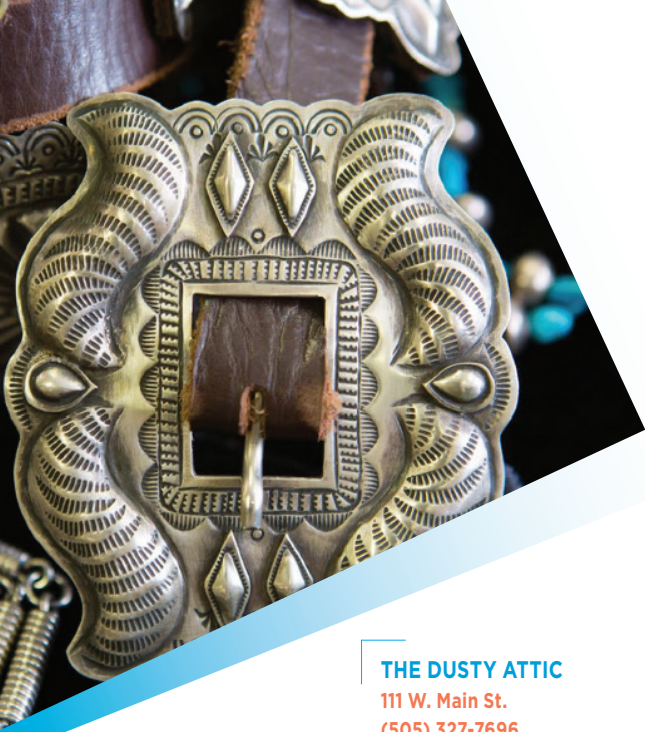
The granddaddy of badlands! A quick search online will show the varied terrain and demonstrate why photographers from across the globe travel to shoot the Bisti Badlands. From hoodoos and spires to fossils and petrified logs, the Bisti will not disappoint. On your first time out, we recommend hiking east from the parking lot towards the two red hills. If time is limited head to the right of the red hills for a wonderful section of hoodoos. For a full Bisti experience continue east and to the left of the red hills and then head towards the two black top hills. From this point it is best you explore the land on your own! Pack water, a compass and hike within your ability. See FarmingtonNM.org for information. See pg. 15

FOUR CORNERS MONUMENT

Where in the United States can you stand in four states at once? Only at the Four Corners Monument. Snap a few fun pictures as visitors implement their creative poses. When your time arrives to approach the seal will you place hands in New Mexico and Arizona and your feet in Utah and Colorado or as a group hold hands across state lines? The photographic options are endless. This monument is a must photo op for anyone passing through the desert southwest. See pg. 16

SHIPROCK PINNACLE

Standing 1,583 feet above the high-desert plains of the Navajo Nation, this sacred landmark is prominently visible within a 30 - 50 mile range of the peak in most directions. Breathtaking shots can be taken from as far as Farmington and Mesa Verde. The best views are west of Farmington from Hwy. 64 and south of Shiprock on Hwy. 491. For an up-close encounter travel south on Hwy. 491, past the pinnacle, and turn west on Route 13. This road will pass through a gap in the dike and connects to a variety of dirt roads that lead to the peak. Many of these dirt roads intersect private Navajo properties, be respectful. See pg. 16



J.A. JEWELERS

4005 E. Main St.
(505) 599-9400
jajewels.com

M.MOOSE, INC.

5920 E. Main St., Suite A
(505) 325-7800
mmoose.com

NAVAJO TRADING COMPANY

126 E. Main St.
(505) 325-1685
jackcook@navajotrading.com

SHIPROCK TRADING POST

527 E. Main St.
(505) 324-0881
shiprocktradingpost.com

STUDIO 116

116 W. Main St.
(505) 801-5889
karenellsbury.com

TOADLENA TRADING POST & MUSEUM

Hwy. 491 & N19
Newcomb, NM
(505) 789-3267
toadlenatradingpost.com

THREE RIVERS ART CENTER (TRAC) & IN CAHOOTS! GALLERY

109 N. Allen
(505) 716-7660
threeriversartcenter.org

ANIMAS VALLEY MALL

4601 E. Main St.
(505) 326-2654
animasvalleymall.com

ARTIFACTS GALLERY & THE CHILE STORE

302 E. Main St.
(505) 327-2907
artifacts-gallery.com

BIG ROCK TRADING POST

3761 Hwy. 64
Fruitland, NM
(505) 598-5184

BOB FRENCH'S NAVAJO RUGS

3459 Hwy. 64
Waterflow, NM
(505) 598-5621
bobfrenchnavajorugs.com

THE DUSTY ATTIC

111 W. Main St.
(505) 327-7696

FIFTH GENERATION TRADING CO.

232 W. Broadway
(505) 326-3211
southwestshowroom.com

HENDERSON FINE ART GALLERY AND HUMANITIES ART GALLERY

4601 College Blvd.
(505) 566-3464
sanjuancollege.edu

HOGBACK TRADING COMPANY

3221 Hwy. 64
Waterflow, NM
(505) 598-5154



FarmingtonNM.org
[#joltyourjourney](https://www.instagram.com/joltyourjourney)

Farmington is the retail shopping hub for the Four Corners region, featuring a variety of stores, specialty shops, art galleries and trading posts.

Here is a list of FCVB members.

Visit our website for a more complete listing of local shops.



LODGING

CVB Members in blue. Area code is (505) unless otherwise specified. Hotel listings are also available at: FarmingtonNM.org

	BREAKFAST	POOL	WEEKLY RATES	HANDICAPPED	KITCHENETTES	PETS	Number of Rooms
Americas Best Value Inn 600 E. Broadway, 325-2288, (877) 322-2288, americasbestvalueinn.com	●	●	●	●		●	140 Rooms
Anasazi Inn 903 W. Main, 325-4564			●	●			60 Rooms 8 Suites
Best Western Plus at Four Corners Inn 4751 Cortez Way, 564-8100, bwthefourcornersinn.com	●	●		●		●	66 Rooms
Bluffview Motel 3700 Bloomfield Hwy., 327-6231			●		●		17 Rooms
Budget Inn 625 E. Main, 326-5521		●					34 Rooms
Casa Blanca Inn and Suites LLC 505 E. La Plata St., 327-6503, casablancaanm.com	●		●	●	●		8 Rooms 2 BR Cottage
Comfort Inn 555 Scott Ave., 325-2626, choicehotels.com	●	●		●		●	59 Rooms 19 Suites
Comfort Suites 1951 Cortland Dr., 325-9414, comfordsuites.com	●	●		●			73 Suites
Courtyard by Marriott 560 Scott Ave., 325-5111, courtyard.com/fmncy	●	●		●			121 Rooms 4 Suites
Economy Inn 332 E. Main, 326-6614			●		●		36 Rooms
Encore Motel 1900 E. Main, 325-5008			●				36 Rooms
Hampton Inn 1500 Bloomfield Blvd., 564-3100, hamptoninn.com	●	●		●			73 Rooms
Holiday Inn Express & Suites 2110 Bloomfield Blvd., 325-2545, farmington-hotel.com	●	●		●		●	101 Rooms 2 Suites
Home2 Suites by Hilton 777 S. Browning, 325-1500, farmingtonbloomfield.home2suites.com	●	●	●	●	●	●	96 Suites
Journey Inn 317 Airport Dr., 325-3548			●	●	●		23 Rooms
Kokopelli's Inn B & B 206 W. 38th St., 860-3812, bbonline.com/nm/kokopelli	●		●		●		1 Cave Suite

	BREAKFAST	POOL	WEEKLY RATES	HANDICAPPED	KITCHENETTES	PETS	Number of Rooms
La Quinta 675 Scott Ave., 327-4706, laquintafarmington.com	●	●	●	●		●	1 Apt 2 Suites 104 Rooms
Motel 6 1600 Bloomfield Hwy., 326-4501, motel6.com		●		●			134 Rooms
National 9 Inn 5915 E. Main, 326-1555			●	●		●	32 Rooms
Quality Inn 1901 E. Broadway, 325-3700, (800) 4CHOICE	●		●	●		●	63 Rooms
Red Lion Hotel Farmington 700 Scott Ave., 327-5221, redlion.com	●	●	●	●	●	●	192 Rooms 38 Suites
Region Inn 601 E. Broadway, 325-1191, theregioninn.com	●	●		●			73 Rooms 2 Suites
Rimrock Lodge 2530 Bloomfield Hwy., 327-4433			●	●	●	●	96 Rooms
Rodeway Inn 1601 E. Broadway, 325-1813, (800) 4CHOICE	●		●	●		●	60 Rooms
Royal Inn 701 Airport Dr., 325-5061			●				21 Rooms
Sage Motel 301 Airport Dr., 325-7501			●		●		40 Rooms
Silver River Adobe B & B 3151 W. Main, 325-8219, silveradobe.com	●				●		2 Rooms 1 Suite
Soaring Eagle Lodge 48 Rd 4370, Navajo Dam, 632-3721, soaringeaglelodge.net	●		●		●		11 Cabins
TownePlace Suites 4200 Sierra Vista Dr., 327-2442, marriott.com/fmnts	●	●		●	●		117 Rooms
Travel Inn 1510 W. Main, 325-0233			●				33 Rooms
Travelodge 510 Scott Ave., 327-0242, (800) 578-7878	●	●	●	●			98 Rooms

With an average of 273 days of sunshine and a variety of locations to park an RV, Farmington has been privileged to host thousands of motor homes touring for rallies, conventions, or explorations on their own throughout the Farmington and Four Corners region. Below is a listing of the local RV parks, services and facilities available to travelers.

HOMESTEAD RV PARK

11 Rd. 6432, Kirtland, NM
(505) 598-9181

homesteadrvparknm.com

65 spaces, full hookup, big rig friendly, 65' pull-thru sites. 30/50 Amp, free Wi-Fi, Directv with ESPN. Cabin rentals. Restroom and shower facilities.

MOM & POPS RV PARK

901 Illinois Ave.
Farmington, NM
(505) 327-3200

35 full hookups, \$25 nightly. Tent spaces \$10.00 per person. Restrooms, showers, dump station, wireless internet, toy soldier store and outdoor train layout. Located just off Hwy 64.

SUNDOWNER MOBILE & RV PARK

219 Airport Dr.
Farmington, NM
(505) 327-1671

sundownerpark.com

33 full hookups, quiet shaded spaces, gravel or asphalt pads. Daily, weekly and monthly rates. Open year-round. Free Wi-Fi. 30/50 amps. Reservations recommended. Pet restrictions.

NAVAJO LAKE STATE PARK

See pg. 15

WESTERLY RV PARK

6440 CR 203
Durango, CO
(970) 247-1275

WesterlyRVpark.com

25 sites. Amenities: full hookups with 50 & 30 amp service. Free Wi-Fi, scenic views, horseshoe pit, dog run, onsite park host, clean landscaped grounds with picnic table at each site. Close to National Forest trails & Animas River launch. Open all year.

SAN JUAN COUNTY FAIRGROUNDS, MCGEE PARK & CONVENTION CENTER

#41 County Road 5568
Farmington, NM
(505) 325-5415

574 on-site RV spaces with electricity and water, and 2000 dry RV spaces. The facility contains a 49,500 sq. ft. convention center, a five-room Multi-Use Building, and two indoor arenas.

SERVICES DUMP STATIONS & PROPANE

CIRCLE W SINCLAIR

2707 E. Main
Farmington, NM
(505) 327-4062

SERVICES GIANT SERVICE STATION

3341 E. Main
Farmington, NM
(505) 325-2410

BROADWAY CONOCO

520 E. Broadway
Farmington, NM
(505) 327-5611

ROADRUNNER FUELS

800 S. Main
Aztec, NM
(505) 333-3990

CHISOLM TRAIL RV SALES, SERVICE AND PARTS

993 NM 516
Aztec, NM
(505) 334-5500
CTRVaztec.com



CAMPING

CHACO CANYON

(505) 786-7014 ext.221

nps.gov/chcu

See pg. 44

A visitor center and campground (49 sites with picnic tables and fire grates) are on-site, but no additional services are offered. The visitor's center

is open 8am - 5pm; closed on Thanksgiving, Christmas, and New Year's Day. Hiking trails are open 7am to sunset year-round. Cost is \$12 per car. Camping is \$15 per night. To reserve a camp site visit recreation.gov or call 877-444-6777.

NAVAJO LAKE STATE PARK

36 Road 4110 Unit 1

Navajo Dam, NM

Reservations: (877) 664-7787

Park Office: (505) 632-2278

emnrd.state.nm.us/SPD/navajolakestatepark.html

This beautiful State Park features 7 campgrounds with over 240 campsites. Choose from sites near the lake and marinas or below the dam, along the San Juan River. Electric and water hookups as well as handicap accessible sites available. Visit newmexicostateparks.reserveamerica.com for reservations.



Relax we have you covered



Lodging, Full Day Spa,
Hot Springs, Olympic
Swimming pool and Sauna
Call

970-247-0111

TrimbleHotSprings.com

Trimble A Necessary Pleasure
Spa & Natural Hot Springs



**Citizens
Bank**

Helping build
San Juan County since

1905.



505.599.0100

www.cbnm.com



FOUTZ TRADING CO.

NAVAJO RUGS DEAD PAWN JEWELRY POTTERY
FOLKART BEADWORK SANDPAINTINGS

SHIPROCK 505-368-5790 KIRTLAND 505-598-6570

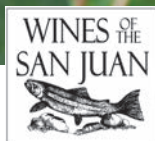
«« HWY. 64 WEST OF FARMINGTON »»



«« WWW.FOUTZTRADE.COM »»



LOCAL WINE INTERNATIONAL AWARDS



winesofthesanjuan.com 505.632.0879
233 HWY 511 Blanco, NM 87412
30 minutes east of Farmington, 1 hour south of Durango, CO

 **UNM
SAN JUAN**

Bachelor
& Graduate
Programs

Shape your future!

*Achieve your
UNM degree*

close to home
with bachelor's
and master's
degree completion
programs.

20+ Degree
options from
which to choose
with great student
support. Academic
and technical
assistance available
for online classes.

For information &
advisement, visit:

3539 East 30th St.
2nd Floor, in
Farmington

505-566-3480
sjcbgp@unm.edu

sanjuanbgp.unm.edu



PAPA JOHN'S
BETTER INGREDIENTS.
BETTER PIZZA.

30% off
Regular Menu Price
Online code FCVACA30
or Any Extra Large
Pizza \$12.00
Online code: FCVACA 12
Please mention coupon when ordering.
Delivery fee and taxes apply. Drivers carry less than \$20

Farmington
3030 E. Main
505-326-7575





JANUARY

JANUARY 8 - 9

Bares, Broncs & Bulls Rodeo

The San Juan County Fairgrounds hosts this rodeo annually where more than 200 rough stock riders compete for prizes. Rodeo begins at 7pm in the McGee Park Memorial Coliseum, located between Farmington and Bloomfield on Hwy 64. 505-287-9534

JANUARY 30 - APRIL 2

Ansel Adams Masterworks: "The Museum Set"

A collection of 47 works by Ansel Adams on display at the Farmington Museum through April 2, 2016, revealing Adams' focus on the drama and splendor of natural environments. Included are many of his most famous and best-loved photographs. Tickets are \$5 adults, \$3 children.

505-599-1174

fmtn.org/farmingtonmuseum

FEBRUARY

Ansel Adams Masterworks: "The Museum Set"

See January
505-599-1174

fmtn.org/farmingtonmuseum

FEBRUARY 9 - 10

Jordan World Circus

Featuring many new and exciting effects created especially for this show incorporate lighting, fireworks, staging and music at the McGee Park Memorial Coliseum.

505-325-5415

thejordanworldcircus.com

FEBRUARY 20

San Juan Symphony - Unforgettable Triumph

Shostakovich's Fifth Symphony at 7:30pm, Henderson Performance Hall at San Juan College. Tickets are adult \$20, seniors \$15, students \$8.

sanjuansymphony.org/season

MARCH

Ansel Adams Masterworks: "The Museum Set"

See January

505-599-1174

fmtn.org/farmingtonmuseum

MARCH 19 - 26

Passion Play

Passion Play Ministries International of the Four Corners tells the story of Christ. Shows held at McGee Park at 7pm each night with Spanish presentations scheduled for March 19 and 20. Admission is free.

passion-play.org

MARCH 19 - APRIL 8

People's Choice Art Exhibit

Various Historic Downtown locations display art from 50 - 100 artists. Vote on your favorite pieces.

505-599-8442

fmtn.org/downtown

APRIL

APRIL 8

People's Choice & Spring Art Walk

Stroll Historic Downtown Farmington, 5 - 9pm, in the final evening of this unique art exhibition! Enjoy art receptions and vote for your favorites.

505-599-8442

fmtn.org/downtown

APRIL 16

Navajo Rug Auction

Annual Navajo Rug Auction at the Farmington Museum. Preview nearly 200 rugs of all sizes, styles and price ranges April 15, noon - 5pm and April 16, noon - 4pm, auction at 4pm.

505-599-1173 or 505-599-1180

APRIL 22 - JUNE 20

Live Horse Racing

SunRay Park & Casino brings live horse racing to Farmington. Monday and Friday post time is 3pm, Saturday and Sunday post times at 1:15pm. Located off Hwy 64 between Farmington and Bloomfield.

505-566-1200

sunraygaming.com

APRIL 23

San Juan Symphony - Beethoven Festival

San Juan Symphony's performance of the beloved Emperor Concerto! Young artists join in the performance 7:30pm, Henderson Performance Hall at San Juan College. Tickets are adult \$20, seniors \$15, students \$8.

sanjuansymphony.org/season

MAY

MAY 6

Gateway to Imagination

Annual National Juried Art Competition attracts artists from across the country, featuring approximately 100 works through July 9 at the Farmington Museum.

505-599-1174

fmtn.org/farmingtonmuseums

MAY 27 - 29

Riverfest

Area rivers celebrated with music, food, entertainment, a 10K and 5K run & walk, river raft rides and more! Festival takes place along the Animas River trails and parks in Farmington.

505-716-4405

riverreachfoundation.com

MAY 27 - 30

Annual Healing Field

Display of 500 flags to honor local, national and personal heroes at the Farmington Boys & Girls Club.

505-860-3843

sanjuancountyeast@gmail.com



JUNE

Gateway to Imagination

See May

505-599-1174

fmrn.org/farmingtonmuseums

JUNE 4

KidFest

San Juan County's kick-off to summer. KidFest is dedicated to kids with tons of fun activities. 10am - 4pm, McGee Park. Entry is \$2.

505-564-3299

sanjuancountykids.com

JUNE 10

Summer Art Walk

Historic Downtown Farmington, 5 - 9pm, celebrates summer with art receptions and open houses at many Downtown locations.

505-599-8442

JUNE 16 - JULY 30

Outdoor Summer Theater

Live local theater in a beautiful natural sandstone amphitheater. Performances Thursdays, Fridays and Saturdays at 8pm at Lions Wilderness Park.

877-599-3331

fmrn.org/sandstone

JUNE 30 - JULY 4

30th Annual Freedom Days Celebration

The Fourth of July is celebrated with special events throughout Farmington, including fireworks, ice cream social, brass band, night parade, Party in the Park and much more.

800-448-1240

farmingtonnm.org

JULY

Outdoor Summer Theater

See June

877-599-3331

fmrn.org/sandstone

JULY 16

Land of Enchantment Rod Run

Join the Northern Street Rodders in Historic Downtown Farmington for the largest nostalgic event in the Four Corners. Enjoy 200+ hot rods, live music, food and more.

505-599-1144

JULY 29 - AUGUST 5

Connie Mack World Series

Baseball fans sit alongside pro and college scouts for the best in amateur baseball as 12 teams from the United States and Puerto Rico compete at Ricketts Park in Farmington.

800-448-1240

cmws.org

AUGUST

AUGUST 8 - 13

San Juan County Fair

Fair features a carnival, livestock shows, exhibits, fiddlers contest, arts & crafts, vendor's booths, live music performances and more at the San Juan County Fairgrounds, McGee Park, on Hwy. 64 between Farmington and Bloomfield.

505-325-5415

sanjuancountyfair.net

SEPTEMBER

SEPTEMBER 3 - 4

Totah Festival Indian Market & Pow Wow

Annual festival featuring Native American artisans from across the Four Corners region and includes an authentic Navajo rug auction and contest pow wow at the Farmington Civic Center.

505-599-1174

SEPTEMBER 17

Brews, Meats & Bands

Enjoy a day at Lions Wilderness Amphitheater for the best brews, meats and bands, noon - 7pm. Art vendors will also be on site. You must be 21 or over to attend this festival. Tickets \$30.

bmbfestival.com

SEPTEMBER 17 - 18

Animas River Green Chile Festival

Harvest season celebration at Sutherland Farms with a petting zoo, train rides, face painting and more!

Admission free. 10am - 6pm.

505-334-3578

sutherlandfarms.net

SEPTEMBER 24

A Real Night at the Museum

Live music, tractor rides and traditional hands-on activities and crafts that bring the past alive at Farmington Museum, 4 - 7pm. Admission free.

505-599-1174

fmrn.org/farmingtonmuseum

SEPTEMBER 24 - 25

Harvest Wine Festival at Wines of the San Juan

Wines of the San Juan hosts two days of live music, internationally awarded wine, great food, and local artisans. winesofthesanjuan.com

OCTOBER

OCTOBER 1

Road Apple Rally

Annual mountain bike race offers pros, veterans and beginners a test of skill on a 30 or 15 mile course through canyons and arroyos of the Glade Run Recreational Area. Race begins at 8am in Lions Wilderness Park.

505-599-1184

roadapplerally.com

OCTOBER 14

Fall Art Walk & Fundraiser

Explore Historic Downtown, 5 - 9pm, with art receptions and open houses at many Downtown locations. 505-599-8442

OCTOBER 14 - 15

Four Corners Storytelling Festival

Traditional tales of the Navajo, Hispanic cuentos, cowboy poetry and a few tall tales, as told by top national and local storytellers. Festival held at Berg Park with night performances at Totah Theater. 505-599-1270

infoway.org

OCTOBER 31

Boo-Palooza

Family friendly Halloween party in Historic Downtown Farmington from 4 - 6pm with games, a dance with live DJ, costume contests and trick or treating. 505-599-1197

NOVEMBER

NOVEMBER 18 - 20

Art350 - Invitational Art Sale

Explore the work of some of the finest artisans in the Four Corners region at this affordable art show where artwork sells for \$350 and less. Farmington Civic Center. 505-716-6057



NOVEMBER 19

Turkey Trot & Gobble Wobble

5K Turkey Trot and a 2-mile Gobble Wobble in Downtown Farmington. This family-friendly event includes children's carnival games, face painting and more. Cost is \$20. 505-599-1184

NOVEMBER 26

Holiday Art Walk & Small Business Saturday

Historic Downtown celebrates the holiday season. Show support for small businesses and enjoy art receptions. 505-599-8442

NOVEMBER 30 - DECEMBER 3

Festival of Trees

Explore a winter wonderland in an indoor forest of artfully decorated Christmas trees. Special events and more at the Farmington Civic Center. 505-325-8154

DECEMBER

DECEMBER 1

Christmas Parade

Farmington's annual lighted Christmas parade kicks off the holiday season! Parade begins at 5:45pm and runs through Historic Downtown Farmington along Main Street. 505-325-0279

DECEMBER 2

Riverglo

Celebrate the holiday season with a stroll along the river with carolers and live performances as luminarias light the trails along the Animas River. Berg Park, 6 - 8pm. 505-716-4405

DECEMBER 3

San Juan College Luminaries

Walk or drive through thousands of luminaries as they light the campus and music fills the air, 6pm - midnight. 505-566-3403

DECEMBER 17

Reindeer Romp & North Pole Stroll

5K Reindeer Romp and 2 mile North Pole Stroll at Orchard Plaza in Historic Downtown Farmington, 4 - 6pm, with children's winter carnival games, live holiday music, Santa and more! 505-599-1184

DECEMBER 17

Audubon Christmas Bird Count

Join birders, 8am to 2pm, at the Riverside Nature Center and take part in this nationwide project. 505-599-1422 fmtn.org

DECEMBER 23

Live Navajo Nativity

Annual live nativity uses traditional Navajo clothing and live animals presented entirely by children at the Four Corners Home for Children, 2103 W. Main St., in Farmington, 6 - 8pm. 505-325-0255, 888-325-0255 navajoministries.org

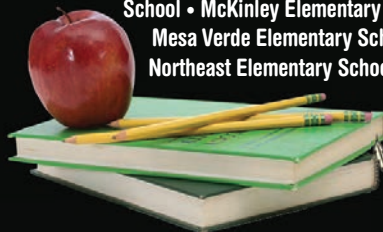


The Future Starts Here

SECONDARY SCHOOLS: Farmington High School
Piedra Vista High School • Rocinante High School
and a soon-to-be-named Early College High School
Heights Middle School • Hermosa Middle School
Mesa View Middle School • Tibbetts Middle School

ELEMENTARY & PRE-K SCHOOLS: Esperanza & CATE Pre-K
Farmington Special Pre-School • Animas Elementary School
Apache Elementary School • Bluffview Elementary School
Country Club Elementary School • Esperanza Elementary
School • Ladera Elementary School • McCormick Elementary

School • McKinley Elementary School
Mesa Verde Elementary School
Northeast Elementary School



Farmington Municipal School District

505-324-9840 www.fms.k12.nm.us

2001 North Dustin, PO Box 5850 Farmington, NM 87401

We'll be waiting for you!



505-564-8100

**Best Western Plus
Four Corners Inn**

4751 Cortez Way
Farmington, NM 87402

bestwesternfarmington@aol.com



**PLUS
Four Corners
Inn**

Newly renovated
Near downtown shopping
and restaurants

Indoor pool & spa
Modern fitness room

Business center
Free wi-fi, Free HBO
Free hot breakfast

**COME IN AND ENJOY
YOUR ALL-TIME
FAVORITES**



**Moons Over
My Hammy®**



T-Bone Steak



Classic Burger



**DENNY'S IS
AMERICA'S DINER!**

**505.324.8415
OPEN 24/7**

600 Scott Ave.
Farmington, NM





Travel Back in Time and Experience
the Most Exciting Old West Adventure just 2 Hours
East of Farmington, New Mexico

The Most Exciting Day Trip

Imagine taking a day trip back to the 1880's
on America's Highest and Longest Narrow Gauge Railroad!
Join us for the trip of a lifetime and take a ride through
history from Chama, New Mexico.

WWW.NEWMEXICOTRAIN.COM



TOLL FREE: 1.888.286.2737

TRAVEL BACK IN TIME. EXPERIENCE THE AUTHENTIC WEST.
TRAINS DEPART DAILY MAY 28 – OCTOBER 23, 2016.

OVER 65 STORES AND RESTAURANTS

DILLARDS
JCPENNEY
SEARS
ROSS DRESS FOR LESS
AÉROPOSTALE
RUE21
BUCKLE
THE CHILDREN'S PLACE
PRO IMAGE
TEXAS ROADHOUSE
ANIMAS 20 THEATER
AND MORE!



4601 EAST MAIN, FARMINGTON
505-326-5467
ANIMASVALLEYMALL.COM
ROUSEPROPERTIES 



Bob French Navajo Rugs

**BEST SELECTION
of authentic
Native American Arts**

Since 1948

Beautiful Navajo-made
textiles, jewelry, baskets,
pottery, kachinas,
and much much more!

15 miles west of Farmington
3459 Hwy 64 Waterflow, NM 87421

■ ■ ■ **505-598-5621** ■ ■ ■

www.BobFrenchNavajoRugs.com



*Crystal pattern, 33" x 49"
Weaver: Sally Wilkenson*

AIR CHARTER SERVICES

ATLANTIC AVIATION

(505) 325-2867

Charter flights, training and aviation services.

AIRLINES

GREAT LAKES

AIRLINES

(800) 554-5111

flygreatlakes.com

Four Corners Regional Airport. Service to & from Denver, CO.

BUS LINES & CHARTERS

ABQ EXPRESS

(505) 850-3880

abqexpress.com

CAR RENTALS

ALL-STAR RENT-A-CAR

(505) 325-4313

(800) 752-1270

2307 E. Main

AVIS RENT-A-CAR

(505) 327-9864

(800) 331-1212

Four Corners Regional Airport

BUDGET RENT-A-CAR

(505) 327-7304

(800) 527-7000

Four Corners Regional Airport

*ENTERPRISE RENT-A-CAR

(505) 327-1356, (800) 325-8007

1-800-rent-a-car

3901 Beckland Dr.

enterprise.com

Free pickup. Insurance claims.

*HERTZ RENT-A-CAR

(505) 327-6093

(800) 654-3131

hertz.com

Four Corners Regional Airport

PUBLIC TRANSPORTATION

Red Apple Transit

(505) 325-3409

fmtn.org

TAXI SERVICE

KB CAB SERVICE

(24 HOUR)

(505) 564-3999

IMPORTANT NUMBERS

FIRE, MEDICAL OR POLICE EMERGENCY

911

POLICE

(NON-EMERGENCY)

(505) 334-6622

WEATHER & ROAD CONDITIONS

(800) 432-4269

AREA VISITOR INFORMATION

FARMINGTON

CONVENTION

& VISITORS BUREAU

(800) 448-1240

(505) 326-7602

AZTEC VISITOR CENTER

(505) 334-9551

NEW MEXICO TOURISM DEPARTMENT

(505) 827-7336

NEW MEXICO STATE PARKS

(888) 667-2757

CHAMBERS OF COMMERCE

Aztec (505) 334-7646

Bloomfield (505) 632-0880

Kirtland (505) 598-5818

AREA SENIOR CENTERS

Aztec (505) 334-2881

Bloomfield (505) 632-8351

Blanco (505) 632-9146

Farmington (505) 599-1380

Kirtland (505) 598-0054

HEALTH CARE SERVICES

RELIANCE MEDICAL GROUP

(505) 566-1915

SAN JUAN REGIONAL MEDICAL CENTER

(505) 609-2000

URGENT CARE CENTER

(505) 609-6495

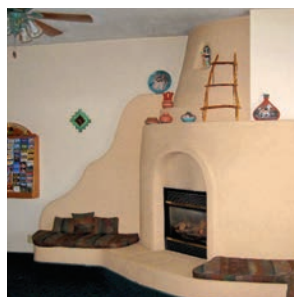
VETERANS OUTPATIENT CLINIC

(505) 326-4383

Farmington's Family Destination



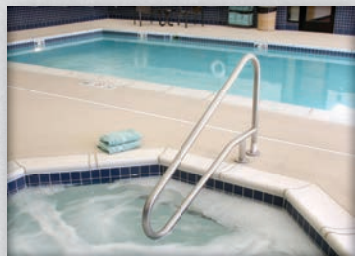
- | | |
|-----------------------------|-------------------------------|
| Free Internet | Small Meeting Facility |
| Free Breakfast Buffet | 100 % Smoke-Free |
| Business Center | AAA, AARP, Military Discounts |
| Free Airport Shuttle | Heated Outdoor Pool & Spa |
| Close to Riverwalk & Trails | Tequila's Restaurant & Lounge |



888-325-1191 • 505-325-1191
601 E. Broadway, Farmington
reservations@theregioninn.com
www.TheRegionInn.com



Farmington's
HOME AWAY *from* **HOME**



Free Breakfast
Free Internet
Free Local Calls

Fully-Equipped Kitchens
Near Restaurants & Shopping
Oversized Fitness Room
Indoor pool / Spa
Airport Shuttle

505.327.2442

**4200 Sierra Vista Drive
Farmington, NM 87402**

Marriott.com/fmnts