

*Explore the Four Corners*

**FARMINGTON**  **N**

*Jolt Your Journey™*

**2017 VACATION GUIDE**

*FarmingtonNM.org*



Welcome

maps attraction info  
directions friendly faces  
event details brochures



souvenirs

**FARMINGTON** 

*Convention & Visitors Bureau*

Stop by our Visitor Center at 3041 E. Main St.

1.800.448.1240 • FarmingtonNM.org



ESTABLISHED 1871

# HOGBACK TRADING CO.

*Tom Wheeler ~ 4th generation trader*

We specialize in cultural and traditional Indian arts and crafts and old pawn, displayed over two levels in a 10,000 square foot hogan-shaped building.

For the first time, Tom's extensive personal collection of rugs, sculptures, paintings, old saddles, drums, baskets and much more will be on display and for sale.

A trip to Hogback Trading Co. is a rare travel treat!



505.598.5154 · 3221 Hwy 64 · Waterflow · NM 87421

15 MILES WEST OF FARMINGTON ON HWY 64



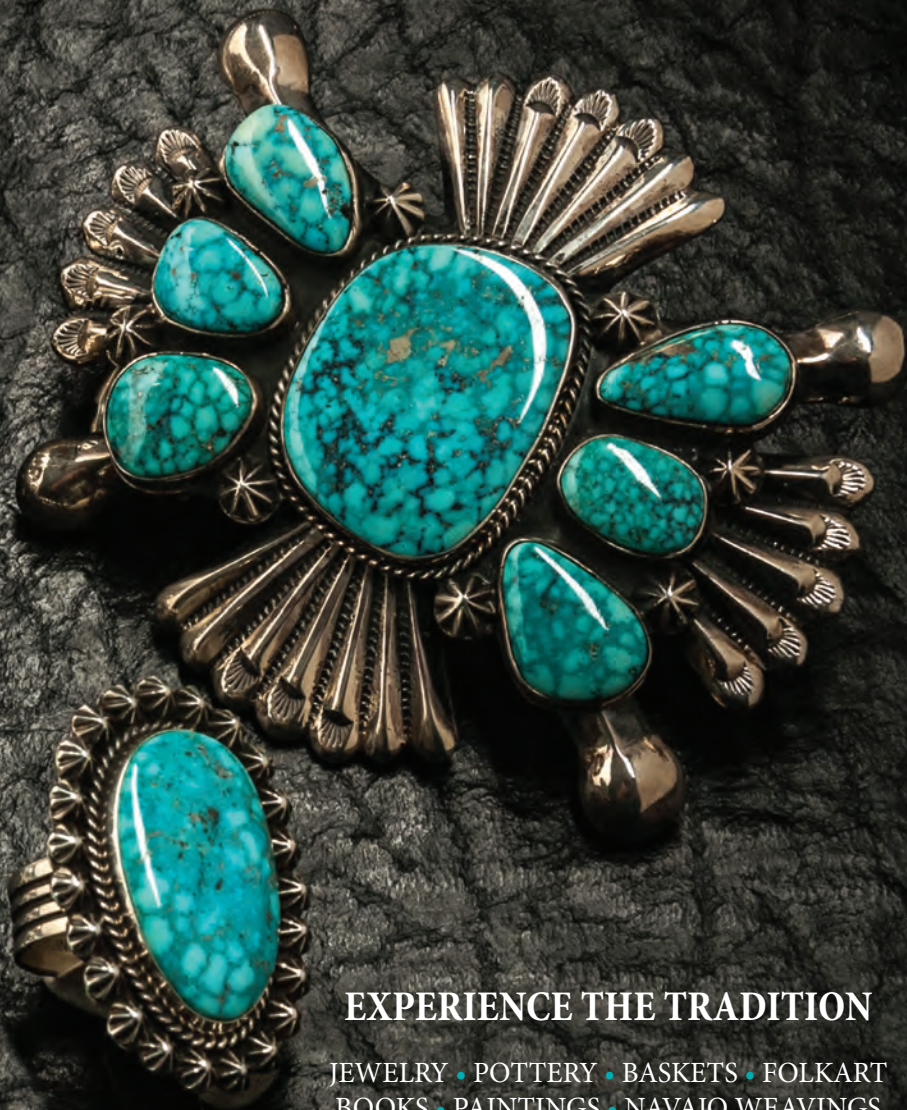


Downtown Farmington, NM - 232 West Broadway 505-326-3211



# FIFTH GENERATION

TRADING COMPANY



**EXPERIENCE THE TRADITION**

JEWELRY • POTTERY • BASKETS • FOLKART  
BOOKS • PAINTINGS • NAVAJO WEAVINGS

Monday - Friday 9 a.m. to 5:30 p.m. and Saturday 9 a.m. to 3 p.m.

*Share your vacation  
with the world...*



#JoltYourJourney  
#PlayFarmington  
#StayFarmington



## **PUBLISHER'S BOX**

Publisher: Hawk Media, Design: FEEL Design Associates, Production: Barbara Davis.

Cover photo: Chaco Canyon by Bill Sharpsteen.

Photographers: Steve Bundy, Farmington CVB, Major Graham, Keenan Harvey, Kate Russell.

Special thanks to the FCVB staff.

© Hawk Media 2017



# CONTENTS

## OUTDOOR ADVENTURES

- Off the Beaten Path — 15
- Points of Interest — 17
- Biking — 18
- Fishing — 19
- Golf — 20
- Disc Golf — 20
- Water Sports — 20
- Outdoor Rentals — 21
- Guided Tours — 21
- Off-Roading — 25

## FAMILY ADVENTURES

- Farmington Parks — 31
- Family Fun Activities — 32

## CULTURAL ADVENTURES

- Native American Cultures — 41
- National Parks — 43
- Museums — 44
- Gaming — 46
- Arts & Entertainment — 47
- Dining — 52
- Shopping — 56

## FEATURES

- Top 5 Jolts — 10
- Bisti — 22
- Scenic Drives — 54

## TRAVEL INFO

- City Map — 26
- Regional Map — 36
- Lodging — 58
- Event Calendar — 64
- Helpful Numbers — 72



# Experience the Magic of our Magnificent Southwest Settings



## Blue Lake Ranch

SW Colorado's Premier Country Inn  
15 minutes from Durango, Colorado  
25 minutes from Mesa Verde National Park  
Private Estate with Gardens and Lake  
[BlueLakeRanch.com](http://BlueLakeRanch.com)



## Ridgewood Events Center

SW Colorado's first & finest Special Event Center  
15 min. from Durango, 45 min. from Farmington  
Mountain, River and Garden views  
Weddings and other events for up to 250  
[RidgewoodEvents.com](http://RidgewoodEvents.com)



## Casa Blanca Inn

Downtown Farmington, New Mexico  
Bed and Breakfast and Executive Rentals  
Exceptional Lodging in Southwest Style  
505-327-6503  
[4CornersBandB.com](http://4CornersBandB.com)



## Don Gaspar Inn

Near the Plaza in Santa Fe, New Mexico  
One of Fodor's top Inns of the World  
Captivating, Affordable, Spacious  
505-986-8664  
[DonGaspar.com](http://DonGaspar.com)





# FARMINGTON'S PREMIER PLACE TO PLAY



**MORE ACTION**  
BINGO  
SUN. – THUR.



**MORE WINNERS**  
OVER \$9.5 MILLION JACKPOTS • paid from 1/1/16 – 8/31/16



**MORE VARIETY**  
5 DAYS OF BUFFETS  
WED. – SUN.



## MORE TO LOVE!

Gambling Problem? Call 1.800.GAMBLER

5 Minutes Southwest of Farmington

10<sup>TH</sup> ANNIVERSARY  
**NAVAJO GAMING**  
2006 - 2016  
An Enterprise of the Navajo Nation

**NORTHERN EDGE**  
CASINO™

# 5 WAYS TO JOLT YOUR JOURNEY

1

## A DAY AT THE BEACH

Lake Farmington has long been a local hot spot for fishing, biking and hiking. The opportunities at this scenic 250 acre lake, nestled along the eastern edge of the city, have grown creating a recreation area that is sure to jolt your journey! Suit up and dive in for a day of kayaking or paddleboarding or enjoy relaxing on a sandy beach. During the summer months, The Beach is open for swimming and features a variety of large water inflatables to maximize the fun.

2

## WILD ENCOUNTERS

Get up close with the amazing Farmington area wildlife when you explore the Riverwalk and Nature Center. Pick up duck food at the Nature Center and personally feed them, see deer at every turn, discover an immense variety of birds and see what other animals you might stumble upon. This area is truly a nature's paradise right in the middle of town.

3

## CELEBRATE AN OASIS

Living in the Southwest, there are few things as precious as water. Farmington is fortunate to have three rivers and proudly celebrates them over Memorial Day weekend with the annual Riverfest. This event is jam packed with jolt worthy activities from river raft rides to disc golf to wiener dog races and cultural dances. Live music and mouth watering food and drink stretch through two parks and across miles of trails along the Animas River.





4

### JOLT YOUR TASTE BUDS

A locally owned restaurant and café both offer Jolt Your Journey specials. Clancy's Pub has created a Jolt Your Journey sushi roll that features a tantalizing combination of flavors with tempura asparagus, lobster and the not-to-be-missed green chile all in a setting as eclectic as the restaurant's menu! 302 Main Espresso is tucked inside Artifacts Gallery which is a historic lumber and hardware store. The vibes of the space are as energizing as the Jolt Your Journey drink that grabs you with its 4 shots of espresso, sweetened with local honey.

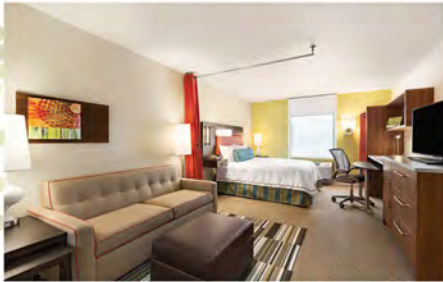
5

### GAZE AWAY AT OUR STARS

Farmington boasts enchanting skies day or night. In the evening, after witnessing a breathtaking sunset, take in a star filled sky from one of our many remarkable viewing locations. Chokecherry Canyon, Pinon Mesa or Lake Farmington are just a few of the peaceful and dynamic places to feast one's eyes on the Milky Way or catch a meteor shower. Celestial bodies shine brightly here!

# Relax while working or just work on relaxing.

Home2 has everything travelers need to feel at home on the road.  
Rates for 1 night, 7 nights, or 30+ nights.



## Home2 Amenities Include:

Stylish studio & one-bedroom suites with fully-equipped kitchen & 42" flat screen HDTV | Free Wi-Fi  
Free breakfast at the Inspired Table™ | Spin2Cycle laundry & fitness room | Outdoor lounge areas  
Pet-friendly | Indoor pool | Meeting Space | Coffee & tea served 24/7 | Relax & connect in our Oasis  
Sustainability | Business Services | Home2 Market | Group Rates | Hotel Packages

**HOME2 SUITES BY HILTON FARMINGTON/BLOOMFIELD**

777 South Browning Parkway, Farmington, NM 87401

[www.farmingtonbloomfield.home2suites.com](http://www.farmingtonbloomfield.home2suites.com)

505-325-1500

*Free to be you™*



# What do we have to do to get your attention?

*We look forward to seeing you  
at the Farmington Museum*

Special membership discounts on  
any fee-based traveling exhibits.  
Free admission to over 200 museums  
nationwide...and more.  
505.599.1173 [fmfound@gmail.com](mailto:fmfound@gmail.com)

3041 E. Main Street  
Farmington, NM 87402  
505.599.1174  
[www.farmingtonmuseum.org](http://www.farmingtonmuseum.org)





FarmingtonNM.org #joltyourjourney

# OUTDOOR ADVENTURES

**COME FOR THE ADVENTURE... STAY FOR LIFE**

Many scenic natural landscapes and unique outdoor adventure destinations can be found within the Farmington area that lie beyond paved roads or trails. As a hub for adventure seekers and active families, Farmington is a nature lovers paradise. Trace the footsteps from centuries past, taking photos and leaving only footprints as you explore the geological wonders and beauty surrounding Farmington.





- 15 Off the Beaten Path
- 17 Points of Interest
- 18 Biking
- 19 Fishing
- 20 Golf
- 20 Disc Golf
- 20 Water Sports
- 21 Outdoor Rentals
- 21 Guided Tours
- 22 Bisti / Breaking Badlands
- 25 Off-Roading

## Off the Beaten Path

### Angel Peak Scenic Area

Hwy. 550 and CR 7175  
(505) 564-7600 or  
(800) 842-3127  
[blm.gov/nm](http://blm.gov/nm)

A 40 million-year-old geological formation surrounded by badlands, the "Angel" raises its wings over the sculpted and shaded colors of the surrounding high desert. There are overlooks and trails to explore; popular activities include hiking, photography, picnicking and camping. Primitive camping and picnic areas are available with campfire rings, tables

and vault toilets. No water or other services available. Angel Peak is located 16 miles south of Bloomfield on Hwy. 550, traveling east on CR 7175 over three miles of gravel road. See pg. 55

### Animas River Trails

505-599-1197

Over 8 miles of woodland, riverside and nature trails weave through Animas and Berg Parks. These trails are ideal for jogging, walking, bicycling, bird and wildlife watching and horseback riding. Two pedestrian bridges cross the Animas River with several observations areas. Trails can be accessed off Browning Parkway, Animas Park and at Scott Avenue and San Juan Blvd. in Berg Park, near many local hotels.

### Aztec Natural Arches

[aztecnm.com](http://aztecnm.com)

Natural arches and bridges have a special draw for landscape photographers. Over 300 natural sandstone arches and bridges have been identified near Aztec, divided among 24 canyon tours. Visit the Aztec Visitor Center for maps.

### Bisti / De-Na-Zin Wilderness

Hwy. 371 and CR 7297  
(505) 564-7600 or  
(800) 842-3127  
[blm.gov/nm](http://blm.gov/nm)

Petrified logs and other fossils are scattered among the numerous colorful landforms and unique geological features of this federally protected area. Photographers come from across the globe to capture this unique landscape. The hoodoos, spires and black and fire-red hills come to life during the "magic hours" before sunrise and sunset.

An excellent selection of formations can be found 2 miles east of the parking lot. Visit [FarmingtonNM.org](http://FarmingtonNM.org) to see a map noting many of the unique formations. Plan for at least half a day to explore the badlands properly. Bring water, sunscreen and a compass. Note: cell phone service is sparse. Primitive camping is possible, no services or water are available. The wilderness area is located 37 miles south of Farmington on Hwy. 371, and 2 miles down CR 7297. See pg. 55



*Where one day  
just isn't  
enough.*

## Navajo Lake State Park

36 Road 4110 Unit 1  
Navajo Dam, NM  
(505) 632-2278  
[emnr.state.nm.us/SPD/  
navajolakestatepark.html](http://emnr.state.nm.us/SPD/navajolakestatepark.html)

With 150 miles of shoreline and over 21,000 acres of land, Navajo Lake State Park is the ultimate playground for water lovers. It crosses the New Mexico and Colorado state border and features sections of the famous San Juan River. Activities within the park include: camping, boating, sailing, fishing, hunting, swimming, scuba diving, water skiing, wildlife viewing and hiking. The second largest

lake in New Mexico and one of the most popular State Parks, Navajo Lake offers 7 campgrounds with over 240 developed sites. Some sites offer electric and water and full hookups. Two marinas are located on the NM side of the lake. The park is located 45 miles northeast of Farmington on Hwy. 173, 550 and 511.

## Shiprock Pinnacle

Hwy. 491/Indian Route 13  
Shiprock, NM  
(928) 810-8501  
[discovernavajo.com](http://discovernavajo.com)

The most iconic landmark in New Mexico! This magnificent geological exposed volcanic rock rises 1,583' above the

high desert plain. The rock is accompanied by two radiating 150' high volcanic dikes. The rock is sacred to the Navajo people, who call it Tsébit'a'í, the rock with wings. Because of the sacred nature of Shiprock Pinnacle, climbing is not permitted. This dramatic formation is best viewed from State Highway 64 and U.S. Highway 491 / and Indian Highway Route 13.  
See pg. 55



# Points of Interest

## Canyon de Chelly National Monument

PO Box 588  
Chinle, AZ 86503  
(928) 674-5500  
[nps.gov/cach](https://www.nps.gov/cach)

Canyons sheltered the Ancestral Puebloans for centuries and served as an ancestral stronghold for the Navajo. Navajo families continue to farm in the canyon. A visitor center, campground and lodging facilities are available. No fee required to drive the North or South Rim Drives or to hike the White House Trail. Canyon tours by private companies are available. The monument is 145 miles southwest of Farmington via Hwy. 64, Hwy. 160 and Hwy. 191.

## Four Corners Monument

Navajo Parks & Recreation  
PO Box 2520  
Window Rock, AZ 86515  
(928) 871-6647  
[navajonationparks.org](https://www.navajonationparks.org)

The monument marks the only point in the United States where four states meet. A new plaza and interpretive panels were unveiled in September 2010. An Indian marketplace with hand-worked crafts operates daily. The monument is a must for shutter bugs. Cost is \$5 per person, located 60 miles northwest of Farmington on Hwy. 160. Park cell number is (928) 206-2540.

## Monument Valley

PO Box 360289  
Monument Valley, UT  
84536  
(435) 727-5870  
(435) 727-5874  
[navajonationparks.org](https://www.navajonationparks.org)  
[discovernavajo.com](https://www.discovernavajo.com)

Enchanting landscapes of dramatic mesas, buttes and fragile pinnacles, in a striking palette of red and orange, cross the border from southeast Utah to northwest Arizona. A hotel, visitor center, gift shop and restaurant are on-site and open year round. Explore a two-hour self-guided loop and keep an eye out for flocks of sheep. Independent access to the Valley is limited; vehicle and horseback tours led by Navajo guides can be arranged. The park is open 8am - 5pm with extended summer hours. Park entry is \$20 (per vehicle with up to 4 people) and \$6 each additional person. Native Americans and children 9 and under are free. The Valley is located 131 miles west of Farmington on Hwy. 64 to Hwy. 160 and north on Hwy. 163 at Kayenta, AZ.

## Salmon Ruins & Heritage Park

6131 Hwy. 64, Bloomfield, NM  
(505) 632-2013  
[salmonruins.com](https://www.salmonruins.com)

Salmon Pueblo, one of the largest outlying colonies of Chaco Canyon, was built in the Chacoan architectural style during the 11th century. The museum's exhibits display prehistoric pottery and

other fascinating artifacts, such as Navajo and Spanish cultural items. Heritage Park is comprised of replica dwellings and habitations forming a "timeline of San Juan Basin history." A self-guided interpretive trail provides a leisurely walk through the Salmon Ruins and Heritage Park. A picnic area is available. Salmon Ruins and Heritage Park are open daily 8am - 5pm; November through March, Sunday hours are noon - 5pm. Admission is \$4 per adult, \$3 per senior, \$1 per child 6 - 16, children under 6 are free. Located 10 miles east of Farmington on Hwy. 64.

## Wines of the San Juan Vineyard Winery & Tasting Room

233 Hwy. 511, Blanco, NM  
(505) 632-0879  
[winesofthesanjuan.com](https://www.winesofthesanjuan.com)

The Southwest is within our soul and you will experience it firsthand upon visiting Wines of the San Juan. The winemaker showcases his drive to be true to the region through robust, fruit forward wines that enliven the senses. The styles of wine produced are diverse, from bold and serious to fun and light hearted. Experience internationally awarded wines in the shady courtyard where picnic lunches are encouraged. Located 30 minutes east of Farmington in the San Juan River Valley. Open Daily 10am - 5pm, Sundays noon - 5pm, Closed Tuesdays. Open for extended summer hours.

# BIKING

Mountain biking trails are abundant throughout Farmington and San Juan County offering outdoor enthusiasts a great chance to experience the beauty and scenery of the high desert plains. In October, Farmington hosts the **Road Apple Rally**, a thrilling 15 mile course for pros and amateurs allowing mountain bikers to participate in the longest consecutive running mountain bike race in North America. Access to the course is from Hood Mesa Trail or at the end of Foothills Drive. **Piñon Mesa**, located 3 miles north of Main Street on Hwy. 170, offers distinctive trails with a variety of terrain. The trailhead is marked by a large cottonwood on the west side of the highway. **Alien Run** trails are also popular. Access from Hart Canyon, 4 miles north of Aztec on US Hwy. 550. For information on additional trails, call (800) 448-1240, visit [FarmingtonNM.org](http://FarmingtonNM.org) or the Farmington BLM Field Office (505) 564-7600 or (800) 842-3127.

## 505 Cycles

4301 E. Main

Farmington, NM

(505) 326-0429

Daily and weekly mountain bike rentals available. Offers specialized bicycles and accessories, repair and service.

Hours are Monday - Friday

9am - 6pm, Saturday 9am - 5pm.

Winter hours are 9am - 5pm

Monday - Saturday.





# Fishing

## Quality Waters and the San Juan River

The world famous "Quality Waters" is all catch and release, beginning .25 miles downstream from Navajo Dam. Flowing a little over 3.75 miles below the dam, it consists of runs and riffles teeming with rainbow, brown and cutbow trout. This Special Trout Waters section is posted with NO daily bag limit. Anglers may only fish up to 2 single barbless hook, fly or lure and one rod at a time. Year-round fishing is available on all sections of San Juan River with an additional 6 miles of open waters below Cottonwood Campgrounds.

## Majestic Enchantment

221 Hwy. 511, Blanco, NM  
(505) 801-9163

[majesticenchantment.com](http://majesticenchantment.com)

Enjoy year-round fly fishing for trophy german brown and rainbow trout along this privately owned section of the San Juan River.

## Navajo Lake

36 Road 4110 Unit 1  
Navajo Dam, NM  
(505) 632-2278

Navajo Lake is the second largest lake in the state and has 150 miles of shoreline containing trout, kokanee salmon, large northern pike and a host of other warm water species. Two full-service marinas, two full boat docks, boat rentals and multiple campgrounds are available. See pg. 16

Experience world-class fly fishing along the San Juan River's Quality Waters, enjoy fishing from a boat from Navajo Lake's 150 mile shoreline or boat and shore fish at Lake Farmington's 250 acre lake. Farmington and the surrounding area is popular with anglers, fly and reel fishers. The possibilities are endless. Visit Farmington for the fishing trip of a lifetime.

**FOR PERMIT INFORMATION CONTACT THE NM GAME AND FISH DEPARTMENT. (505) 476-8000, [WILDLIFE.STATE.NM.US](http://WILDLIFE.STATE.NM.US)**

## Lake Farmington

Main Street/NM 516  
Farmington, NM  
(505) 599-1197

Open for shoreline fishing year-round, this 250 acre lake is open to fishing rainbow trout, largemouth bass, catfish, and pike. Non-motorized and electric motor boating is allowed with boat inspection onsite, May through September.

## Jackson Lake

436 Hwy 170,  
Farmington, NM  
(505) 476-8000

Jackson Lake is located 5 miles north of Farmington, on the west side of NM 170 (La Plata Highway). Access to the lake is by foot only, 1/4 mile hike from the parking lot. Species include catfish, bluegill and bass.

## Morgan Lake and Cutter Dam Reservoir

(928) 871-6451  
[nndfw.org](http://nndfw.org)

Located on the Navajo Reservation, just outside of Farmington, both lakes are open year-round. Morgan Lake is 20 miles west of Farmington.

Species include largemouth bass, channel catfish and bluegill. Cutter Dam Reservoir, 26 miles east of Farmington, has rainbow trout, brown trout, and kokanee salmon. A Navajo Nation fishing permit is required for both lakes. Boats must have a Navajo watercraft permit. Contact the Navajo Fish and Wildlife Department for information.

# Guides & Outfitters

## Arcom Outfitting & Guide

3802 Windsor Dr.  
Farmington, NM  
(505) 860-2325  
[martinez\\_art@hotmail.com](mailto:martinez_art@hotmail.com)  
[guidefitter.com/arcom-fishing-hunting](http://guidefitter.com/arcom-fishing-hunting)

## Soaring Eagle Lodge

#48 Road 4370,  
Blanco, NM  
(505) 632-3721  
(800) 866-2719  
[info@soaringeaglelodge.net](mailto:info@soaringeaglelodge.net)  
[soaringeaglelodge.net](http://soaringeaglelodge.net)

# Golf

## Piñon Hills

2101 Sunrise Pkwy.  
Farmington, NM  
(505) 326-6066  
[piñonhillsgolf.com](http://piñonhillsgolf.com)

Municipal course, regulation 18-hole. Rated by Links Magazine as the #2 Municipal Golf Course in the US and #7 by Golfweek, Piñon Hills remains one of the best bargains in golf.

## Civitan Municipal

2200 N. Dustin  
Farmington, NM  
(505) 599-1194  
[fmrn.org](http://fmrn.org)

Par 3 course.

## Aztec Municipal Golf Course

29 Road 3025  
Aztec, NM  
(505) 334-3248  
[aztecunicipalgolfcourse.com](http://aztecunicipalgolfcourse.com)  
Regulation 18 hole.

## Riverview

#64 Road 6520  
Kirtland, NM  
(505) 598-0140  
[riverviewgolfnm.net](http://riverviewgolfnm.net)  
Regulation 18 hole.

## San Juan Country Club (Private)

5775 Country Club Dr.  
Farmington, NM  
(505) 327-4451  
[sanjuancountryclub.org](http://sanjuancountryclub.org)  
Regulation 18 hole, offers reciprocity.



*Come experience  
the great escape.*

# Disc Golf

## Lions Wilderness Park

(505) 599-1144  
Located at 5700 College Blvd at Sandlewood offering 27 holes. The front 9 is short, scenic, sandy slickrock with piñons, junipers and good elevation changes. The middle 9 are longer and more difficult with denser trees in spots with the back 9 even longer.

## Majestic Enchantment

(505) 801-9163  
[majesticenchantment.com](http://majesticenchantment.com)  
Located on the San Juan River offering 18 holes. Call for pricing.

## San Juan College

(505) 566-3221  
Located behind the San Juan College Health and Human Performance Center, offers 18 holes overlooking breathtaking southwest vistas and a series of challenging holes that range from easy to moderately difficult.

# Water Sports

## Lake Farmington

Main Street/NM 516  
(505) 599-1197  
Kayaking and paddle boarding are among the activities available.





## Navajo Lake Marina

#42 CR 4110, Navajo Dam, NM  
(505) 632-3245 or  
(800) 582-5687  
navajomarina.com

## Outdoor Rentals

### The Outdoor Equipment Rental Center

4601 College Blvd.  
Farmington, NM  
(505) 566-3221  
sanjuancollege.edu/oerc  
Rent outdoor equipment such as mountain bikes and tents to kayaks and snowshoes. Have your mountain bike, road bike, snowboard or skis serviced by a certified technician.  
Hours are Monday - Friday  
2pm - 7pm, Saturday  
8am - 1pm. Closed Sundays.

## Guided Tours

### Journey into the Past Tours

(505) 632-2013  
sreducation@sisna.com  
chacotours.org

Tours of Chaco Canyon, Dinétah areas and the Bisti Badlands. Customized tours can be built. Let a local expert enhance your walk through history.

### Mild to Wild Rafting & Jeep Trail Tours Inc.

(800) 567-6745 or  
(970) 247-4789  
mild2wildrafting.com

20+ years the adventure and whitewater experts, offering individual and group trips for team building, incentive, corporate, youth groups and family reunion trips.

### Mountain Waters Rafting

(800) 337-8199 or  
(970) 259-4191  
durangorafting.com

Family friendly to adventurous raft trips, jeep tours and customized guided tours.

### Navajo Agricultural Products Industry (NAPI)

(505) 566-2600  
navajopride.com

Tours of the processing plant.  
See pg. 41

### PNM San Juan Generating Station

(505) 598-7600  
Coal-fired power plant tours.

## The Beach at Lake Farmington

See pg. 32

## Morgan Lake

(928) 871-6451  
nndfw.org

This lake offers fantastic windsurfing and boating opportunities, located 20 miles west of Farmington. Watercrafts are required to have a Navajo Nation watercraft permit, and anglers must have a Navajo Nation fishing permit. Swimming is not permitted.

## Navajo Lake State Park

See pg. 16

## 505 Cycles

See pg. 18

## Paddle Shack and Shiver Shack

Main Street/NM 516  
(505) 320-7274

Offers single, double and triple recreational kayaks, fishing kayaks and stand up paddle boards by the hour, for use on Lake Farmington. Group discounts available. Concessions available. Open daily 11am - 6pm, Memorial Day through Labor Day.

# Breaking Badlands

—JOHN BISCELLO

**T**here is no title, no credits, no music as we fade in to a long shot of a stark and otherworldly landscape. The camera, a fugitive stalker, closes in and pans horizontally, revealing: milk-frosted sand dunes, trees resembling gnarled and arthritic sages, hills of variegated pastels, wind-carved rock formations, and brush like parched electric pompadours.

The camera inclines to a high angle shot, framing the cloud-scrolled cathedral of sky, and as the shot lingers, Debussy's "Claire de Lune" begins playing and the image slowly dematerializes into a soft white blur.

At this point, A) Rod Serling could appear and deliver an ambassador's preamble before welcoming you into the Twi-

light Zone, B) You encounter a hobbit or elf or ogre indicating that you are now traversing Middle Earth, C) Three suns appear in the sky enlightening you to the fact that a dome-headed green man could pop up at any minute, D) You wake up and wonder: was it really just a dream, or ...

If you want high-priced, slickly manufactured entertainment, go to Disneyland; if you want a cinematic prism through which to have a multi-dimensional experience, consider the Badlands of the Bisti/De-Na-Zin Wilderness.

The Bisti/De-Na-Zin Wilderness, designated by the government in 1984, comprises almost 42,000 acres, and is located in San Juan County, about 45 minutes south

**For additional information on the Bisti/De-Na-Zin Wilderness see pg. 15**





of Farmington. Bisti, translated from the Navajo word, Bistati, means “among adobe formations.” De-Na-Zin draws its name from the Navajo word for “crane,” as petroglyphs of cranes have been found south of the Wilderness.

If we were to flash way way back, we’re talking around 70 million years ago, a vintage snapshot of Bisti would show a rivine delta that lay just west of the shore of an ancient sea. Time, the ultimate sculptor-meets-sorcerer, has given the area an alchemical makeover, and what stands now is a surreally inspiring window into prehistory.

Bisti makes the imagination go supple. It was easy for me to envision a pterodactyl casting its formidable winded shadow upon this landscape, while in the case of my girlfriend, who was my traveling companion, she imagined a Martian outpost that would have made Ray Bradbury salivate.

The fact that there are no marked trails in Bisti leads to a freeform style of wandering, where the paths you choose are entirely up to you and your instincts. These are badlands, meaning you will be exposed to the elements and there are no water sources, so it is important to prepare accordingly.

While my girlfriend and I only got to spend a limited amount of time in the area (we plan to return, camp overnight, ...

*Continue reading at:*  
[FarmingtonNM.org/breaking-badlands](http://FarmingtonNM.org/breaking-badlands)





San Juan Regional Medical Center

# Health for All Seasons



We believe in health and healthy living for our community. That's what makes it possible for you to enjoy the journey.



SAN JUAN REGIONAL  
MEDICAL CENTER

505.609.2000 | [sanjuanregional.com](http://sanjuanregional.com)

# FOUTZ TRADING CO.

NAVAJO RUGS DEAD PAWN JEWELRY POTTERY  
FOLKART BEADWORK SANDPAINTINGS

SHIPROCK 505-368-5790 KIRTLAND 505-598-6570

<<< HWY. 64 WEST OF FARMINGTON >>>



<<< [WWW.FOUTZTRADE.COM](http://WWW.FOUTZTRADE.COM) >>>





# OFF-ROADING

Discover World Class Off-Road! From national championship level rock crawling to OHV trails, Farmington is quickly becoming the hottest off-road center offering acres of epic trails plus great views of surrounding iconic landscapes. Take advantage of staying and playing in Farmington and having your hotel, restaurants and shops close by, all within city limits. In 2016, the City of Farmington adopted an ordinance authorizing some off-highway recreational vehicles (ROV) to be operated on city streets. The ordinance permits side by side off road recreation vehicles with a steering wheel, roll cage, and seat belts. ATVs are not permitted at this time. For full details visit [fmntn.org](http://fmntn.org) and search for Ordinance #2016-1286.

## Chokecherry Canyon / Glade Run Recreation Area

Farmington BLM  
(505) 564-7600 or  
(800) 842-3127  
[blm.gov/nm](http://blm.gov/nm)

Comprised of over 19,000 acres of varying terrain, the Glade features some of the best 4x4 technical trails. In 2016, the W.E. Rock World Extreme Rock Crawling Grand National Championship was held in the Glade. In 2015, Farmington's Chokecherry Canyon, a system of trails in the Glade Run Recreation Area, was voted #1 in New Mexico in the PartCatalog Best Trails in America survey. The famous

Chokecherry Canyon trails can be accessed by turning onto Glade Road (County Road 1980) from Piñon Hills Blvd or from the intersection of College Blvd. and Hood Mesa Trail. Special use zones exist within the Glade. Visit the BLM Farmington Field Office for the most current Glade Run Recreation user group maps.

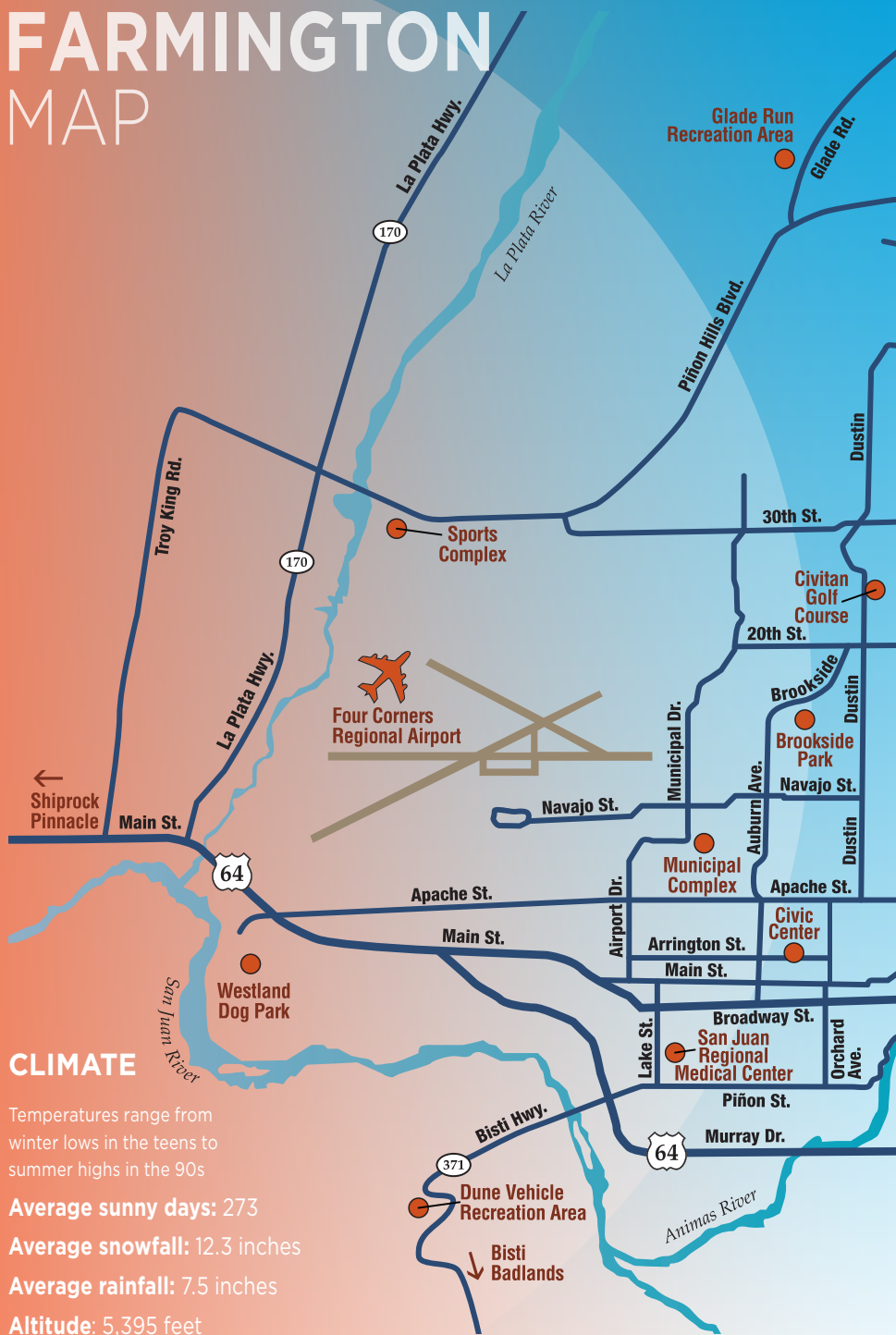
## Dunes Recreation Area

Farmington BLM  
(505) 564-7600,  
(800) 842-3127  
[blm.gov/nm](http://blm.gov/nm)

Over 800 acres of terrain shaped perfectly for motorcycle and ATV enthusiasts sits just 1.5 miles south of Farmington on Highway 371. Test your skills on large sand dunes, sandy arroyos and seemingly endless trails at the Dunes. Locals love to challenge themselves year-round at "The Bowl," located at the park entrance. This nook surrounded by dunes is ideal for riders and spectators alike.



# FARMINGTON MAP



## CLIMATE

Temperatures range from winter lows in the teens to summer highs in the 90s

**Average sunny days:** 273

**Average snowfall:** 12.3 inches

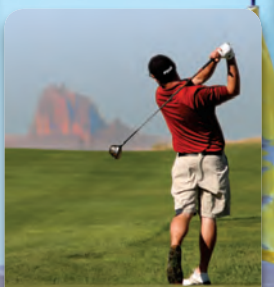
**Average rainfall:** 7.5 inches

**Altitude:** 5,395 feet





**BEST VALUE**  
in The Four States!



Playable 351 Days a Year

Short 10-Minute Drive  
from Farmington  
Covered Golf Cars  
Fully Stocked Golf Shop  
Driving Range  
Practice Facilities



and

**THE GRILL @ Riverview**  
Great green chili cheeseburger –  
the only thing better is a double!



CALL or CLICK for TEE TIMES:

**505-596-0140**

[www.RiverviewGolfNM.com](http://www.RiverviewGolfNM.com)

Road 6520 #64, Off US Hwy 64  
Kirtland, New Mexico 87417

Find us:  
RiverviewGolfNM



**CLOSE TO  
THE RIVER.  
FAR FROM  
ORDINARY.**

On the Animas River  
Riverwalk trails  
In-room spas, fireplaces  
Indoor pool/fitness center  
Meeting facilities  
Golf packages  
Free airport shuttle



*We look forward to welcoming you at  
The Courtyard by Marriott*

505.325.5111

560 Scott Ave. Farmington, NM

**BOB FRENCH NAVAJO RUGS**

■ ■ ■ **BEST SELECTION** ■ ■ ■  
**of authentic Native American Arts**

*Since 1948*

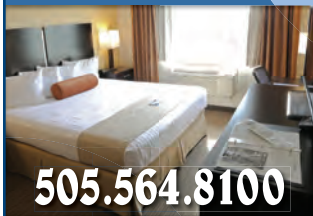


Beautiful Navajo-made textiles,  
jewelry, baskets, pottery, Kachinas,  
and much much more!

■ ■ ■ **505-598-5621** ■ ■ ■



We'll be waiting for you!



505.564.8100

### Best Western Plus Four Corners Inn

4751 Cortez Way  
Farmington, NM 87402  
bestwesternfarmington@aol.com



## Best Western **PLUS.**

### Four Corners Inn

- Newly renovated
- Near downtown shopping and restaurants
- Indoor pool & spa
- Modern fitness room
- Business center
- Free wi-fi, Free HBO
- Free hot breakfast



## artifacts gallery

contemporary art  
and fine crafts

Artifacts Gallery and The Studios are located in historic downtown Farmington. Over 40 local and area artists are featured – working in a variety of mediums.

**NOW OPEN IN ARTIFACTS:**



## 302 main espresso

**302 MAIN ESPRESSO**  
Espresso Drinks • Drip Coffee  
Cold Brew • Chai



## the chile STORE

Chile Products from New Mexico  
and the Four Corners

505-327-2907  
302 e. main street  
farmington, nm 87401



**PAPA JOHN'S**  
BETTER INGREDIENTS.  
BETTER PIZZA.

# 30% off

## Regular Menu Price

Online code FCVACA30

## or Any Extra Large Pizza \$12.00

Online code: FCVACA 12

Please mention coupon when ordering.

Delivery fee and taxes apply. Drivers carry less than \$20

**Farmington**  
**3030 E. Main**  
**505-326-7575**





FarmingtonNM.org #joltyourjourney

# FAMILY ADVENTURES

## CREATE LASTING MEMORIES

Many scenic natural landscapes and unique outdoor adventure destinations can be found within the Farmington area that lie beyond paved roads or trails. As a hub for adventure seekers and active families, Farmington is a nature lovers paradise. Trace the footsteps from centuries past, taking photos and leaving only footprints as you explore the geological wonders and beauty surrounding Farmington.





- 31** Farmington Parks
- 32** Family Fun Activities
- 32** Aquatic Center
- 32** Bowlero Lanes/Batter-Up
- 32** Tennis Courts
- 32** Farmington Recreation Center
- 32** Riverside Nature Center
- 32** Indoor Climbing Wall
- 32** E3 Children's Museum
- 32** The Beach at Lake Farmington
- 33** Durango & Silverton Narrow Gauge Railroad
- 33** La Plata Valley Raceway

jogging, walking, bicycling, bird and wildlife watching and horseback riding. Two pedestrian bridges cross the Animas River with several observation areas. A picnic area with grills is also available. Park access available off Browning Parkway south of the Animas River in Animas Park, and at Scott Avenue and San Juan Blvd. in Berg Park, near many local hotels.

### All Veterans Memorial Plaza

**Tucker Ave.**  
**(505) 599-1197**

All Veterans Memorial Plaza, located along the banks of the Animas River, recognizes the contributions of all American veterans - past, present and future. The intent of this park is not only to honor our veterans, but also to educate those visiting the memorial. Located at Cobble Center on the River Corridor at the end of Tucker Avenue, just off San Juan Blvd.

### Vietnam Veterans Park

**North Butler Street**  
**(505) 599-1197**

Located south of Carlton Street, a memorial plaza within the park includes inscriptions in black granite to honor soldiers missing or killed in action (from the Four Corners area) during the Vietnam War. The qualifying areas for representation are Apache County, AZ; Montezuma and La Plata County, CO; San Juan County and McKinley County, NM; and, San Juan County, UT. The park contains a picnic shelter and playground.

## Farmington Parks

The City of Farmington features more than 70 public parks and park facilities including riverside nature trails, dog parks, playgrounds, skateboarding parks and tennis courts. Enjoy disc golf at the Lions Wilderness Park course or explore the Animas River Trails through Animas and Berg Parks.

**PARKS RESERVATIONS AT (505) 599-1400. VISIT [FMTN.ORG/PRCA](http://FMTN.ORG/PRCA)**

### Berg Park Fountain

**Scott Ave & San Juan Blvd.**  
**(505) 599-1167**

Kids of all ages will enjoy this outdoor interactive spray pad. Located on the corner of Scott Ave. and San Juan Blvd. Smaller spray pad at Orchard Park.

### The River Corridor

**Browning Parkway**  
**(505) 599-1197**

Over 8 miles of woodland, riverside and nature trails weave through Animas, Berg, Boyd and Westland Parks. These trails are ideal for

# Family Fun Activities

## Aquatic Center

1151 N. Sullivan Ave.  
Farmington, NM  
(505) 599-1167

The Aquatic Center features an indoor Olympic-size pool with one three-meter and two one-meter diving boards, children's playground and a 150-foot triple loop water slide. Open year-round.

## Bowlero Lanes & Batter-Up Batting Cages

3704 E. Main St.  
Farmington, NM  
(505) 325-1857  
[bowlerooffarmington.com](http://bowlerooffarmington.com)

Bowlero Lanes offers hours of affordable entertainment, perfect for active families looking to build memories. Bowling alley is open seven days a week and offers dining and games. Batting cages open April through August. Call for rates and hours.

## Tennis Courts

2301 W. Pinon Hills Blvd.  
Farmington, NM  
(505) 325-7936  
[fntn.org/prca](http://fntn.org/prca)

There are 22 lighted courts in Farmington, the jewel being the national award-winning tennis courts at the Farmington Sports Complex with eight lighted courts. A Pro shop is open from Memorial Day to Labor Day, supervised by a USPTA certified teaching pro.

## Farmington Recreation Center

1101 Fairgrounds Rd.  
Farmington, NM  
(505) 599-1184  
[fntn.org](http://fntn.org)

Five racquetball courts available for hourly reservations or drop-ins Monday through Saturday. Wallyball courts, full size gym, Jazzercise, ZUMBA, family events and summer kids' programs are available.

## Riverside Nature Center

Browning Pkwy.  
Farmington, NM  
(505) 599-1422  
[farmingtonmuseum.org](http://farmingtonmuseum.org)

See pg. 46

## Indoor Climbing Wall San Juan College

4601 College Blvd.  
Farmington, NM  
(505) 566-3487  
[sanjuancollege.edu/climbing](http://sanjuancollege.edu/climbing)

A three-dimensional indoor climbing wall is available for beginners, intermediate and advanced climbers. The climbing wall has 6,000 sq. ft. of climbing and features 17 top rope stations, 12 lead climbing lines, 2 roofs, a running crack and a 600 sq. ft. bouldering cave. The cost is \$7/day pass. Climbers must be accompanied by parent or guardian. Hours are Monday - Thursday, 11am - 8:30pm, Friday, 11am - 7:30pm, Saturday, 10am - 2pm, and closed Sundays.

## E3 Children's Museum & Science Center

302 N. Orchard  
Farmington, NM  
(505) 599-1425  
[farmingtonmuseum.org](http://farmingtonmuseum.org)

The museum offers hands-on science related interactive exhibits and role playing areas in the main gallery with special programs scheduled throughout the year. The Tot's Turf gallery is a developmentally appropriate environment for children 5 and younger. Open Tuesday - Saturday, 10am - 5pm.

## The Beach at Lake Farmington

Main Street/NM 516  
Farmington, NM  
(505) 599-1167

Swimming is permitted in designated areas only. Bring your own inflatables or play on the water slides and trampoline. Kayak and paddleboard rentals available. Concessions on-site. Call for prices and seasonal hours.





## Durango & Silverton Narrow Gauge Railroad

479 Main Ave.

Durango, CO

1-888-TRAIN-07

[durangotrain.com](http://durangotrain.com)

This historic coal-fired, steam-powered, narrow gauge train travels through the wilderness of the San Juan National Forest between Durango and Silverton in southwestern Colorado. Trains run daily from early May to late October. Winter trains run Thanksgiving through early May. See pg. 45

## La Plata Valley Raceway

14 mile marker NM Hwy 170

La Plata, NM


(505) 793-3382

[laplatavalleyraceway.com](http://laplatavalleyraceway.com)

Premier sand drag race track, built by a racer, for racers. The track, comprised of clay and sand, is 300 feet long with a shut down length of over 1400 feet. Concessions available onsite. Open year round. Contact them directly to learn more about classes, upcoming races and admission fees.



#JoltYourJourney #PlayFarmington #StayFarmington



VISIT OUR FREE  
OLD WEST INDIAN MUSEUM

# BIG ROCK TRADING POST

Large selection of Indian Jewelry  
General Merchandise  
Pawn · Propane

**505-598-5184**  
3761 US HIGHWAY 64  
WATERFLOW, NM 87421  
12 miles west of Farmington  
[www.bigrocktradingpost.com](http://www.bigrocktradingpost.com)



Experience  
the  
ancients...  
in the  
heart of  
Indian  
Country



## SALMON RUINS

Museum, Library, & Research Center



- 11th CENTURY PUEBLO
- PIONEER HOMESTEAD
- GUIDED TOURS
- GIFT SHOP, PICNIC AREA

OPEN: MON-FRI 8-5 • SAT-SUN 9-5  
NOV-APRIL SUNDAY HOURS: 12-5

**505-632-2013**

[WWW.SalmonRuins.com](http://WWW.SalmonRuins.com)

2 Miles West of Bloomfield, NM on Hwy 64



# EXPLORE

- Aztec Ruins National Monument
- Over 300 Natural Sandstone Arches
- Navajo Lake State Park
- Renowned Alien Run Mountain Bike Trails
- Fly Fishing on the Quality Waters of San Juan River
- Historical Aztec Museum and Pioneer Village
- Ancestral Pictographs, Pueblitos & Petroglyphs



(888) 543-4629 | [AztecNM.com](http://AztecNM.com)





# LOCAL WINE INTERNATIONAL AWARDS

WINES OF THE SAN JUAN



winesofthesanjuan.com 505.632.0879

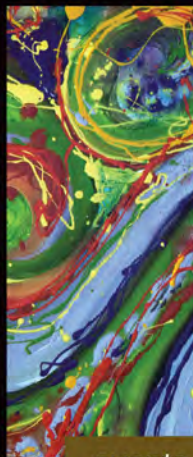
233 HWY 511 Blanco, NM 87412

30 minutes east of Farmington, 1 hour south of Durango, CO

karen.ellsbury



classes/parties



patrick.hazen

events

# Studio 116

art · photography · jewelry

116 West Main • 505-801-5889 • www.karenellsbury.com

# FOUR CORNERS AREA MAP







# Colorado

**Blanding**

Hovenweep National Mon.

491

Anasazi Heritage Center

550

**Cortez**

160

Mesa Verde National Park

**Durango**

D. S. Narra R.

**Ute Mtn. Ute Nation**

Four Corners Monument

160

170

La Plata

Animas

San Juan

**Teec Nos Pos**

64

**Shiprock**

Jackson Lake

Lake Farmington

Aztec Ruins

**Aztec**

Shiprock Pinnacle

**FARMINGTON**

**Bloomfield**

Toadlena / Two Grey Hills Trading Posts

13

5

Salmon Ruins

550

**Tsaile**

Bisti / De-Na-Zin Wilderness

Ang

anyon de Chelly National Monument

**Navajo**

**Navajo Nation**

Chaco Culture National Historical Park

134

491

371

urango  
lverton  
ow Gauge  
railroad



**Southern Ute Nation**

Navajo Lake State Park

Quality Waters

**Dulce**

**Chama**

Cumbres & Toltec Scenic Railroad

**Jicarilla Apache Nation**

Cutter Dam

Dinétaah Rock Art and Pueblitos

el Peak

lageezi

New Mexico

**Cuba**





# m. moose

fun. funky. fashionable.



*Shop Beautiful & Bold. Shop M. Moose.*

505.325.7800

5920 E. Main St. Suite A, Farmington, NM 87402

Hours: M-F 10-6 • Sat 10-5 • Closed Sun

[www.mmoose.com](http://www.mmoose.com)



[TrimbleHotSprings.com](http://TrimbleHotSprings.com)



## *Trimble*

Spa & Natural Hot Springs

*Durango's only  
Natural Hot Springs  
North of Durango,  
7 Miles outside city limits.*

*Lodging*

*Hot springs*

*Spa Services*

*..... And more!*

*6475 CR 203, Durango  
Co 81301  
970-247-0111*



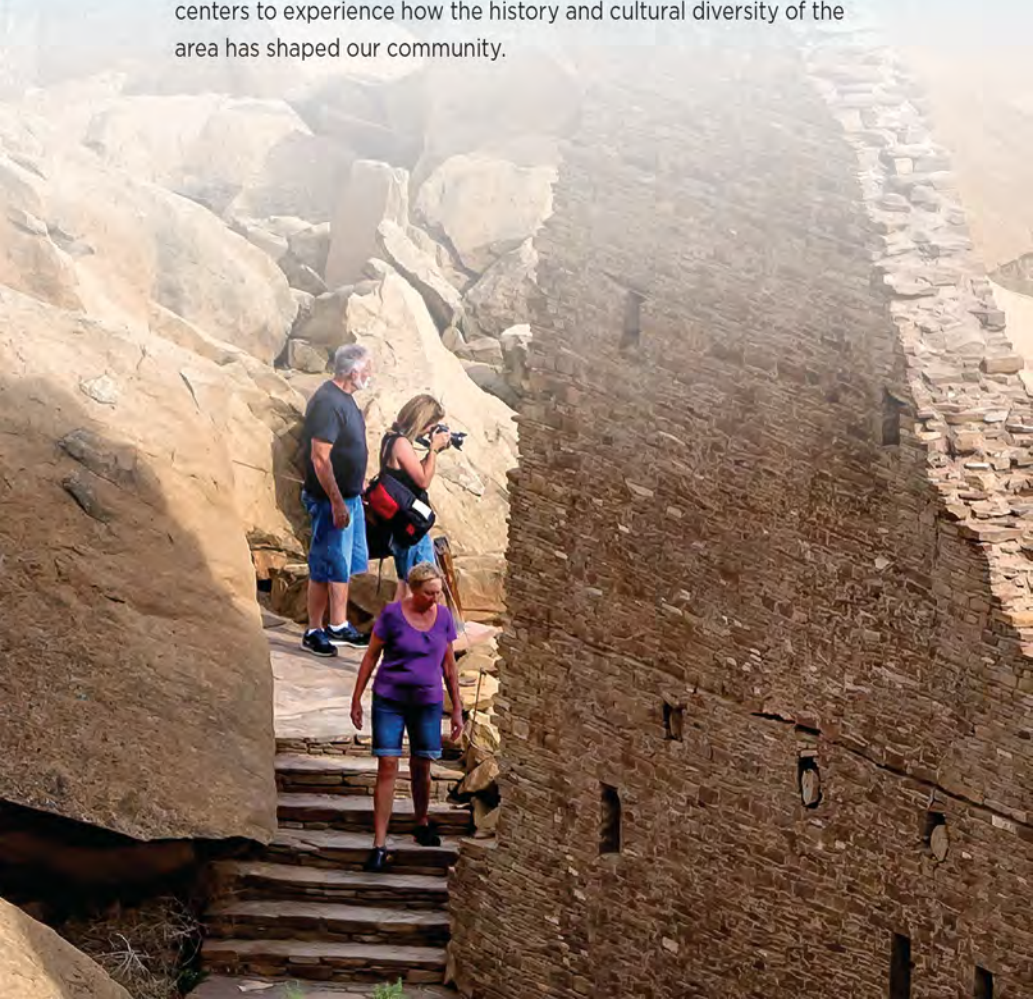


FarmingtonNM.org #joltyourjourney

# CULTURAL ADVENTURES

## IMMERSE YOURSELF... PEOPLE, ART, CULTURE AND HISTORY

Immerse yourself in a land steeped in culture and history - homeland to the Navajo, Hopi, Southern Ute, Ute Mountain Ute and Jicarilla Apache people. Walk the path of ancients, as you tour five national parks and monuments. Explore art galleries, museums, shops and performance centers to experience how the history and cultural diversity of the area has shaped our community.



- 41 Navajo Diné
- 42 Hopi
- 42 Southern Ute
- 42 Ute Mountain Ute
- 42 Jicarilla Apache
- 43 National Parks
- 44 Museums
- 46 Gaming
- 47 Arts & Entertainment
- 52 Dining
- 56 Shopping

### Navajo Tourism

PO Box 663  
Window Rock, AZ 86515  
(928) 810-8501  
[discovernavajo.com](http://discovernavajo.com)

### Navajo Parks & Recreation Center

(928) 871-6647  
[navajonationparks.org](http://navajonationparks.org)  
Tribal Park guidelines,  
camping and hiking.

### Navajo Fish & Wildlife Department

Window Rock, AZ 86515  
(928) 871-6450  
[nndfw.org](http://nndfw.org)  
Fishing and hunting on the  
Navajo Nation.

### Navajo Agricultural Products Industry (NAPI)

(505) 566-2600  
[navajopride.com](http://navajopride.com)  
Established in 1970, NAPI is the Navajo Nation's farming and agribusiness enterprise, responsible for farming Navajo Indian Irrigation Project (NIIP) lands. Approximately 76,000 of the planned 110,630 irrigable acres are developed. Crops include pinto beans, potatoes, alfalfa and grains. NAPI products are marketed throughout the United States and other markets under "Navajo Pride." Call for guided tours.

## Navajo Diné

The Navajo Nation is the largest Native American Nation in the country, with roughly a third of the population living in New Mexico. The majority of the Navajos live in Arizona and a small cluster reside in Southern Utah. Window Rock, Arizona, next to the Arizona/New Mexico border, is the Nation's capital. Navajoland is in the northwest corner of the state and is surrounded by magnificent land formations, breathtaking views, and great fishing. There are several fishing lakes, the San Juan River and hunting for deer, turkey, bear and small game is also permitted. The Northern Navajo Nation Fair is held in Shiprock, NM every year in early October featuring

an abundance of fresh farm products, four-mile parade, rodeos, Indian dancing and an Indian Market as well as the first fall sacred Night Chant Ceremony. Visitors travel many miles for sacred Navajo ceremonies such as the Night Chant and Mountain Way Chant. Northwestern New Mexico is also a great place to purchase Navajo tapestries, silverwork, pottery, paintings and baskets that have gained worldwide recognition. Area shops and trading posts specialize in the beautiful artwork created by local Native American artists. For information on visiting the Navajo Nation contact:

# Hopi

Though completely surrounded by the Navajo reservation, the Hopi people have a distinctly different history from their neighbors. The major Hopi villages are located at the top of three mesas in northeastern Arizona. Each village is independent, practicing its own style of government. All Hopi villages have gifted artisans. First Mesa people are known for their Hopi polychrome pottery. Second Mesa people specialize in Hopi silver overlay jewelry and coiled basketry. Third Mesa people produce works of wicker and twill basketry. Visitors are welcome. Touring of Hopi lands requires a Hopi or Tewa Guide. Inquire about guides at the local shops, or at the Hopi Cultural Center located on Second Mesa. Photography, sketching, videotaping and sound recording are prohibited by Hopi law. If visitors are allowed to witness a Hopi ceremony, they should be respectful and questions regarding the sacred event are discouraged.

## Hopi Cultural Center

PO Box 67

Second Mesa, AZ 86043

(928) 734-2401

[hopiculturalcenter.com](http://hopiculturalcenter.com)

# Southern Ute

The Southern Ute Indian Tribe's capital is headquartered in Ignacio, CO. Rich in culture and history, the Utes create

handcrafted bead work, baskets, hide painting, leather work, and pottery.

## Southern Ute Museum & Cultural Center

503 Ouray Dr.

Ignacio, CO 81137

(970) 563-9583

[southernute-nsn.gov](http://southernute-nsn.gov)

Located on the Southern Ute Indian reservation at 77 County Road 517, just north of Ignacio, CO. The Southern Ute Museum and Cultural Center features several galleries. The Permanent Gallery, depicts the History of the Ute People, as conveyed through large photographic curtains, life-size replicas, informative text panels and child friendly interactives. Free admission. Open seven days a week, 10am - 5pm, and Thursdays 10am - 7pm. "Behind the Scenes" tours are also available at a cost of \$15/person.

# Ute Mountain Ute

Centered around their tribal capital in Towaoc, CO, the Ute Mountain Ute have created a sound economy based on tourism and natural resources. The tribe celebrates its annual Bear Dance in June. Visitors welcome.

## Ute Mountain Ute

(970) 565-3751

[utepark@fone.net](mailto:utepark@fone.net)

[utemountainutetribe.com](http://utemountainutetribe.com)

## Ute Mountain Tribal Park

(970) 565-9653

[utemountaintribalpark.info](http://utemountaintribalpark.info)

A special outdoor primitive experience featuring several hundred archaeological sites that are part of the Mesa Verde ruins. Day tours, short tours and camping are available. Visitors should be prepared with food and water.

# Jicarilla Apache

Dulce, NM, the capital of the Jicarilla Apache Reservation, is 80 miles east of Farmington on Hwy. 64. The reservation features some of the largest antlered mule deer on the continent. The tribe maintains a large hunting, fishing and outdoor recreation operation in the beautiful northern New Mexico wilderness. Special events include the Little Beaver Celebration the third weekend in July, Pony Express race, and the annual Go-Jii-Ya feast at Stone Lake, 18 miles south of Dulce. The Museum of Arts and Crafts displays beadwork, basketry, pottery and painting and offers artisan demonstrations. For hunting and fishing information call (575) 759-3255.

## Jicarilla Apache Nation

PO Box 507

Dulce, NM 87528

(575) 759-3242



# NATIONAL PARKS

Discover the beauty and history of the Four Corners region as you explore our 5 magnificent national parks and monuments. Take advantage of staying and playing close to home by making Farmington your basecamp for exploration and enjoying the natural beauty of the Four Corners.

**Farmington is the perfect home base to tour these five American treasures.**

## Aztec Ruins National Monument

725 Ruins Road, Aztec, NM  
(505) 334-6174  
[nps.gov/azru](https://www.nps.gov/azru)

From A.D. 1050 to 1300, the ancestors of the modern-day Pueblo people constructed and used a monumental network of public and ceremonial structures, roadways, multi-storied great houses and smaller residential buildings.

The community functioned as a center for trade, as well as public and ceremonial events. Visitors can step into the Great Kiva, reconstructed in 1934, which is the only reconstructed building of its kind. The monument became a UNESCO World Heritage Site in 1987. A half mile self-guided trail winds through a large excavated Great House. There are also museum exhibits, a video

and bookstore. A free Junior Ranger program is available where kids earn a badge for exploring the 900-year-old site. Hours are 8am - 6pm Memorial Day through Labor Day and 8am - 5pm the rest of the year, closed for Thanksgiving, Christmas and New Year's Day. Located 14 miles east of Farmington off Hwy. 516 on Ruins Road / Road 2900. Entrance fee is \$5/adult, children 15 and younger are free.



## Chaco Culture National Historical Park

1808 CR 7950, Nageezi, NM  
(505) 786-7014 ext. 221  
[nps.gov/chcu](http://nps.gov/chcu)

Designated a UNESCO World Heritage Site in 1980 and also known as Chaco Canyon, this area was a major regional center of Ancestral Puebloan culture from A.D. 850 to 1200. The park preserves the impressive remains of the Chacoan great houses, monumental public buildings whose planning and construction spanned hundreds of years. The finely crafted masonry, geometric layout of the buildings, the associated great kiva, earthen mounds and Chacoan "roads" are hallmarks of this great culture. A campground is on-site, but no additional services are offered. A Visitor Center is open 8am - 5pm; closed Thanksgiving, Christmas and New Year's Day. Hiking trails are open 7am to sunset year-round. Cost is \$16 per car. Camping is \$15 per night. To reserve a camp site visit [recreation.gov](http://recreation.gov) or call 877-444-6777. Travel 75 miles south of Farmington on Hwy. 550. From Hwy. 550, turn right on CR 7900. Travel 4 miles and take the turn onto CR 7950. Travel 16 miles, 8 of which are gravel and 4 are dirt roads that can become impassible in inclement weather. Call to ensure the road is passable. Drinking water is available at the Visitor Center. See pg. 61

## Hovenweep National Monument

McElmo Route  
Cortez, CO 81321  
(970) 562-4282  
[nps.gov/hove](http://nps.gov/hove)

Features five beautifully built ancient towers dating from A.D. 1200 to 1300 by the Ancestral Puebloan people. The towers are square, circular and D-shaped dwellings. Hovenweep Castle showcases the skillful masonry used over 700 years ago. Trails are open from sunrise to sunset. Camping is available. The Visitors Center is open daily from 8am - 6pm, hours change with the season.

## Mesa Verde National Park

No.1 Navajo Hill,  
Mesa Verde National Park,  
CO 81330  
(970) 529-4465  
[nps.gov/meve](http://nps.gov/meve)

Designated a UNESCO World Heritage Site in 1978. Its mesa-top sites and cliff dwellings were built by the Ancestral Puebloans between A.D. 550 and 1300. The Visitor and Research Center is open in summer from 7:30am - 7pm, fall and spring from 8am - 5pm, winter from 8:30am - 4:30pm. A museum is open year-round 9am - 5pm with extended summer hours. The campground is open mid-May to mid-October. Park entrance is \$15 per vehicle Memorial Day through Labor Day, \$10 per vehicle otherwise. \$8 per person by foot, bicycle or bus, Memorial Day to Labor

Day, otherwise \$5. Tickets are required for ranger-led tours to some cliff dwellings and may be purchased from the Visitor and Research Center, the museum, campground or ranger station. Mesa Verde is located on Hwy. 160 near Mancos, CO, 75 miles north of Farmington.

## Natural Bridges National Monument

HC-60 Box 1  
Lake Powell, UT 84533  
(435) 692-1234  
[nps.gov/nabr](http://nps.gov/nabr)

Features three large naturally-carved sandstone bridges created when meandering streams cut through canyon walls. The bridges, Sipapu, Kachina, and Owachomo can be viewed from overlooks along a 9 mile scenic drive or by trail. Bridge trails range from .4 miles to 1.4 miles round trip. Longer hikes are also available, 5.4 to 8.6 miles round trip. The park is open year-round. Camping is available at the park's 13 site first come first serve campground.

## Museums

Travel back through time, reliving the lifestyles of ancient predecessors, exploring the history and cultures of the people of the Four Corners as you enjoy the numerous exhibits featuring historical artifacts, replica tools, locomotives, and the largest collection of insulators.



## Durango Silverton Narrow Gauge Railroad Museum

479 Main Ave.,  
Durango, CO 81301  
(970) 247-2733  
[durangoTRAIN.com](http://durangoTRAIN.com)

Located in the heart of downtown next to the D&SNGRR depot, this museum features full-size locomotives, historic rolling stock, Durango's first motorized fire truck, railroad art and collectibles. Daily hours correspond with the depot's hours.

## E3 Children's Museum & Science Center

See pg. 32

## Farmington Museum

3041 E. Main St.  
Farmington, NM  
(505) 599-1174  
[farmingtonMUSEUM.org](http://farmingtonMUSEUM.org)

Experience a wide variety of exhibits relating to the diverse history of the area's cultures, traveling exhibits and art shows. Lecture series, performances, and workshops are offered year-round. The museum store, Currents, features exhibit-related merchandise, books on local and regional interest, souvenirs, toys and educational materials. The San Juan County Growers' Market is held in the parking lot during summer and early fall. Check for seasonal hours. The museum is open Monday - Saturday, 8am - 5pm. Admission: suggested donation \$3 adults, \$2 children.

## Aztec Museum & Pioneer Village

125 N. Main Aztec, NM  
(505) 334-9829  
[aztecMUSEUM.org](http://aztecMUSEUM.org)

Visit this historical museum and explore its many rooms filled with artifacts. Stroll through the Pioneer Village, 12 original and replicated structures dating from the 1880s. Outside exhibits feature oil and gas equipment, farm implements and historical machinery. Pioneer history is highlighted in photographs, archives, artifact exhibits and displays. Open May through October 9am - 4pm, Tuesday - Saturday.

## Bolack Museum at B-Square Ranch

3901 Bloomfield Hwy.  
Farmington, NM  
(505) 325-4275  
[bolackMUSEUMS.com](http://bolackMUSEUMS.com)

B-Square Ranch is owned and operated by Tommy Bolack. Tours to the two following museums are free and offered by appointment on the hour. Walk-ins welcome if room is available.

### Museum of Fish & Wildlife

Visit one of the largest private collections of mounted animals in the world with over 2,500 specimens from five continents.

### Electro-Mechanical Museum

This impressive private collection depicts developments in the electric power, telephone, radio, communications, as well as oil and agriculture industries. Visitors can see the largest collection of insulators, a tank, Elvis' Cadillac, antique equipment and more.



## Riverside Nature Center

Browning Pkwy.  
Farmington, NM  
(505) 599-1422  
[farmingtonmuseum.org](http://farmingtonmuseum.org)

Observe birds and animals from large windows overlooking a wetland where food and water attract wildlife. Exhibits feature the plants and animals of the riverside with emphasis on historic uses and ecosystems. Outside herb and xeriscape demonstration gardens are located adjacent to the facility. The Center's hours vary by season and event. Located in Animas Park.

## San Juan County Museum at Salmon Ruins

6131 US Hwy. 64  
Bloomfield, NM  
(505) 632-2013  
[salmonruins.com](http://salmonruins.com)

The museum features a permanent collection of Ancestral Puebloan pottery, jewelry and fetishes, as well as replica tools and hunting equipment. Interactive displays, focusing on archaeological techniques. Temporary exhibits explore cultures of the Four Corners region. Gift shop on-site. A self-guided interpretive trail provides a leisurely walk through Salmon Ruins and Heritage Park. Hours: Monday - Friday 8am - 5pm, Saturday and Sunday 9am - 5pm. Admission: \$4 adults, \$3 seniors, \$1 children 6 - 16, under 6 free, located 10 miles east of Farmington on Hwy. 64

## Sherman Dugan Museum of Geology at San Juan College

5301 College Blvd.  
Farmington, NM  
(505) 566-3325  
[sanjuancollege.edu](http://sanjuancollege.edu)

The Sherman Dugan Museum of Geology showcases an array of beautiful minerals, including a fluorescent display and a breathtaking amethyst geode. Also featured are unique fossils from around the world, including a 35-million-year-old rhinoceros skull. This collection is one of the most comprehensive displays in the Four Corners area and has been noted for its diversity in show. The museum is open Monday - Friday, 6:30am - 7pm. Admission is free.

## Gaming

### Flowing Water Casino

2710 US 64  
Shiprock, NM  
(505) 368-2300  
[flowingwaternavajocasino.com](http://flowingwaternavajocasino.com)

Offering more winning and more excitement with 130 machines, plus fast, friendly dining. Located 27 miles west of Farmington. Managed by the Navajo Nation Gaming Enterprise. Hours: Sunday - Thursday 9pm - 1am, Friday and Saturday 9pm - 4am.

## Northern Edge Casino

2752 Rd. 36  
Fruitland, NM  
(505) 960-7000  
(877) 241-7777  
[northernedgecasino.com](http://northernedgecasino.com)

Located 5 minutes southwest of Farmington, off US Hwy. 371. This casino is managed by the Navajo Nation Gaming Enterprise and features 750 slots, table games, poker room, food court and Cedar Bow Restaurant & Bar. Hours: Sunday - Wednesday 8am - 4am, Thursday - Saturday 24 hours.

## The Sky Ute Casino Resort

14324 Hwy. 172  
Ignacio, CO 81137  
(800) 876-7017  
[skyutecasino.com](http://skyutecasino.com)

Get in on the action 24/7 at Colorado's only resort and casino with over 45,000 square foot of gaming fun, live blackjack, poker, roulette, bingo and over 600+ high-tech slots. Enjoy 5 restaurants, 24 RV sites with full hook-ups, a bowling center and putt-putt amenities. Offering 140 luxury rooms and next door to the Southern Ute Cultural Center and Museum. Located 73 miles northeast of Farmington on Hwy. 172 in Ignacio, CO.

## SunRay Park & Casino

39 Rd. 5568

Farmington, NM

(505) 566-1200

[sunraygaming.com](http://sunraygaming.com)

Enjoy state-of-the-art slot and video machines along with seasonal live horse racing and coast to coast simulcast horse racing every day. The restaurant offers a variety of food with great customer service. Watch sporting events on 50+ big screens while dining. The casino and restaurant open 7 days a week. Located just 20 minutes from the Farmington Airport and 45 minutes from the Durango Airport.

## Ute Mountain Casino & Hotel

3 Weeminuche Dr.

Towaoc, CO 81334

(800) 258-8007

[utemountaincasino.com](http://utemountaincasino.com)

The State's first Tribal gaming facility, offering live table gaming, the latest slots, and bingo seven days a week. The hotel offers 90 rooms and suites, a pool and state-of-the-art workout facility. Kuchu's Restaurant is on-site. Sleeping Ute RV Park and a full service 24-hour Travel Center are close to the casino.

# Arts & Entertainment

## Farmington Civic Center

200 W. Arrington

Farmington, NM

(877) 599-3331

[fmtn.org/civiccenter](http://fmtn.org/civiccenter)

The Miriam M. Taylor Theater presents concerts and traveling Broadway productions throughout the year. Check out local art association shows in the exhibit balcony.

## Outdoor Summer Theater

5800 College Blvd.

Farmington, NM

(877) 599-3331

[fmtn.org/sandstone](http://fmtn.org/sandstone)

Enjoy live theater under the magnificent New Mexico stars at the natural sandstone amphitheater at Lions Wilderness Park from mid-June to early August. Performances are Thursdays through Saturdays at 8pm. Concessions are available. Past performances have included Annie Get Your Gun, Joseph and the Amazing Technicolor Dreamcoat, Grease, Footloose, Beauty & the Beast and The Addams Family.

## San Juan College

4601 College Blvd.

Farmington, NM

(505) 566-3430

[sanjuancollege.edu/silhouette](http://sanjuancollege.edu/silhouette)

The Silhouette Performing Arts series offers the best in family entertainment. The Art Gallery, located in the Henderson Fine Arts Center, exhibits a wide variety of artwork year-round.

## San Juan Symphony

Farmington, NM

& Durango, CO 81302

(970) 382-9753

[sanjuansymphony.org](http://sanjuansymphony.org)

A 65-piece professional orchestra that presents several concerts each year at the Henderson Fine Arts Center.

## Theater Ensemble Arts, Inc

Farmington, NM

(505) 326-2839

This local theater group provides affordable, multicultural theatrical performances. TEArts strives to develop community interest and youth participation.





ST. CLAIR

VINEYARD • WINERY • BISTRO



# FREE *wine flight*

Mention this ad to your server for a wine flight on the house when you buy an entrée!

WWW.STCLAIRWINERY.COM

(505) 325-0711

5150 E MAIN ST

FARMINGTON, NM

©ST. CLAIR WINERY, FARMINGTON, NM



## LIVE WELL.

Call today to schedule your tour.



## THE BRIDGE AT FARMINGTON

AN ASSISTED LIVING COMMUNITY

505.324.6200

1091 West Murray Drive  
TheBridgeAtFarmington.com

62240

# GREAT Journeys *begin here!*

DISCOVER  
Four Corners  
Regional Airport

[www.fmtn.org/iflyfarmington](http://www.fmtn.org/iflyfarmington)

[facebook.com/iflyfarmington](https://facebook.com/iflyfarmington)

(505) 599-1394



FARMINGTON  
*Join Your Journey*





**Citizens Bank**

Serving San Juan County since

**1905.**



**FARMINGTON | AZTEC | BLOOMFIELD**

505 599 0100 | [www.cbnm.com](http://www.cbnm.com)



**Unforgettable Food & Good Times**  
**~ Award-Winning Beer ~**

**3 RIVERS  
BREWSTILLERY  
& EATERY**

Handcrafted Food  
Lunch & Dinner

**3RB PIZZERIA**  
Fresh Artisan Pizza

**TAP & GAME  
ROOM**

**DISTILLERY  
LOUNGE**



*The gem of Historic Downtown Farmington*



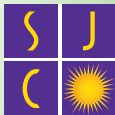
**505-324-2187**



ThreeRiversBrewery.com  
101-113 East Main St.  
Farmington, NM

# Success Matters

- Increased number of graduates by 143% in past 5 years
- Serving nearly 1,900 dual credit high school students annually
- #2 in the nation for Native American graduates receiving Associate Degrees



**SAN JUAN COLLEGE**

Serving the Four Corners Region.  
Face-to-Face & Online

[sanjuancollege.edu](http://sanjuancollege.edu) | (505) 326-3311 |



Where Families  
Come First

# Desert View

FAMILY COUNSELING SERVICES

TRAUMA TREATMENT · AT-RISK YOUTH  
PARENTING · FAMILY THERAPY  
SUBSTANCE ABUSE

*Our therapists provide compassionate  
and confidential guidance.*



**505-326-7878**

6100 E. Main St., Farmington 87402  
Mon-Thurs 8am-6pm · Fri 8am-noon

Statewide Crisis Line:

**1-855-NMCRISIS (662-7474)**

**[www.MyDesertView.org](http://www.MyDesertView.org)**



Get the most from your visit—  
join us for services:  
Sundays at 9:30 AM & 11:15 AM

Or watch online:  
[PinonHillsChurch.com](http://PinonHillsChurch.com)

**piñon hills**  
community church

5101 N. Dustin Avenue • Farmington, NM  
505.325.4541 • [PinonHillsChurch.com](http://PinonHillsChurch.com)

*Ribs, Brisket, Sausage, Chicken, Catfish  
...and all the Fixin's that go with 'em!*

- *Dine In*
- *Carry Out*
- *Catering*

*the*  
**Spare Rib**  
**BBQ**  
**COMPANY**

*Est. 1989*

*1700 E. Main, Farmington*

*505.325.4800*

# The Future Starts Here

**SECONDARY:** Farmington High  
Piedra Vista High  
Rocinante High  
San Juan College High  
Tibbetts Middle  
Heights Middle  
Hermosa Middle  
Mesa View Middle

**ELEMENTARY & PRE-K:** Esperanza & CATE Pre-K  
Farmington Special Pre-School  
Animas Elementary  
Apache Elementary  
Bluffview Elementary  
Country Club Elementary  
Esperanza Elementary  
Ladera Elementary  
McCormick Elementary  
McKinley Elementary  
Mesa Verde Elementary  
Northeast Elementary



## Farmington Municipal School District

505-324-9840 [www.fms.k12.nm.us](http://www.fms.k12.nm.us)  
2001 N. Dustin, PO Box 5850 Farmington, NM 87401

# DICKEYS

## BARBECUE PIT

PICK UP A  
**FAMILY PACK**

GET YOUR FAMILY PACK FOR THE FOOTBALL GAME TODAY



**\$5 OFF FAMILY PACK** DICKEYS

Not valid with other offers, discounts or online. Valid at Farmington location only. Limit 1 per person per visit. Must present coupon. No cash value. Expires 12/31/17.

3701 MESSINA DRIVE • FARMINGTON, NM 87402  
**505.501.7094**

No cash value. Limit one per customer. Must present coupon to Player's Center.  
Not valid with daily specials or any other offers. Offer expires 12/31/2017 at 10pm.

# BUY ONE GET ONE FREE

## Entree or Sandwich.



SUNRAY PARK & CASINO *Come Play with Us!* 505-566-1200



HOT SLOTS GREAT FOOD

*Fast horses!*



**SUNRAY PARK & CASINO**  
*Come Play with Us!* 505-566-1200

No cash value. Limit one per customer. Must be 21 or over. Must have a FREE Player's Card (sign up today!) and coupon to Player's Center.  
Not valid with any other offers. Offer expires 12/31/2017 at 10pm.

# \$5 CASINO FREE PLAY



SUNRAY PARK & CASINO *Come Play with Us!* 505-566-1200



# DINING

Looking for that unique dining experience? Farmington has over 100 restaurants from which to choose. So, whether you are looking for New Mexican cuisine with that oh-so-popular red, green or “Christmas” chile, a burger, sushi, or creamy home-made ice cream, look no further than Farmington. Listed are FCVB members. Visit [FarmingtonNM.org](http://FarmingtonNM.org) for a complete listing. \*Catering available.

## 302 Main Espresso

in Artifacts Gallery

302 E. Main St.

(505) 327-2907

[302main.com](http://302main.com)

## Blue Moon Diner\*

1819 E. 20th St.

Farmington, NM

(505) 324-0001

[bluemoon-diner.com](http://bluemoon-diner.com)

## Cedar Bow Restaurant

in Northern Edge Casino

2752 Rd. 36

Fruitland, NM

(505) 960-7065

[northernedgenavajocasino.com](http://northernedgenavajocasino.com)

## Chick-fil-A Restaurant\*

4910 E. Main St.

Farmington, NM

(505) 325-7000

[chick-fil-a.com](http://chick-fil-a.com)

## Clancy's Pub, an Irish Cantina\*

2703 E. 20th St.

Farmington, NM

(505) 325-8176

[clancys.net](http://clancys.net)

## Come to the Feast\*

Catering only

Farmington, NM

(505) 327-1996

[cometothefeast.com](http://cometothefeast.com)



### Crackers Sports Bar & Ten Pin Diner

in Bowlero Lanes  
3704 E. Main St.  
Farmington, NM  
(505) 325-1857  
bowlerooffarmington.com

### Dickey's Barbeque Pit\*

3701 Messina Drive  
Bldg. 100  
Farmington, NM  
(505) 501-7094  
dickeys.com

### Fabulous Franks Of The Four Corners

Food Truck  
3041 E. Main St  
Farmington, NM  
(505) 635-7150

### Fuddruckers\*

4601 E. Main St.  
Animas Valley Mall  
Farmington, NM  
(505) 326-2089  
fuddruckers.com

### Golden Corral\*

1715 E. Main St.  
Farmington, NM  
(505) 324-8177  
goldencorral.com

### Los Hermanitos Restaurant

3501 E. Main St.  
Farmington, NM  
(505) 326-5664  
  
2400 W. Main St.  
Farmington, NM  
(505-327-1919  
loshermanitos.com

### No Worries Sports Bar & Grill\*

1298 W. Navajo  
Farmington, NM  
(505) 436-2657  
noworriesbarandgrill.com

### Northern Edge Casino Food Court

2752 Rd. 36  
Fruitland, NM  
(505) 960-7000  
northernedgenavajocasino.com

### Papa John's Pizza

3030 E. Main St.  
Farmington, NM  
(505) 326-7575  
papajohns.com

### St. Clair Winery & Bistro\*

5150 E. Main St., Ste. 101  
Farmington, NM  
(505) 325-0711  
stclairwinery.com

### San Juan Country Club\*

5775 Country Club Drive  
Farmington, NM  
(505) 327-4451  
sanjuancountryclub.org  
Offers reciprocity.

### Tequilas

in the Region Inn  
601 E. Broadway  
Farmington, NM  
(505) 327-6900

### The Chile Pod

121 W. Main St.  
Farmington, NM  
(505) 258-4585  
thechilepod.com

### The Spare Rib BBQ\*

1700 E. Main St.  
Farmington, NM  
(505) 325-4800  
thespareribbbq.com

### The Sportz Arena at SunRay Park & Casino

3761 Hwy. 64  
Farmington, NM  
(505) 566-1200

### Three Rivers Brewery & Grill\*

101 E. Main St.  
Farmington, NM  
(505) 324-2187  
threeriversbrewery.com

### Three Rivers Pizzeria

107 E. Main St.  
Farmington, NM  
(505) 325-0308  
threeriversbrewery.com

### Weck's\*

2800 E. Main St., Suite. A  
Farmington, NM  
(505) 592-0435  
wecksinc.com

# SCENIC DRIVES

## **NAVAJO ROUTE 5 SCENIC ROUTE**

Drive south of Farmington on Hwy. 371 for approximately 22 miles, turning west on Navajo Route 5 (signage will indicate Burnham). This stretch of road is just under 30 miles and provides many photogenic landscapes featuring elements of the Bisti Badlands, high desert plateaus and majestic land formations. In the horizon you will see Bennett Peak and Ford Butte with Shiprock Pinnacle in the background. The end of Navajo Route 5 is Hwy. 491. Turn north and travel 25 miles on the highway where you can either head west on Navajo Route 13 or continue on to the community of Shiprock.

## **NAVAJO ROUTE 13 SCENIC ROUTE**

Navajo Route 13 passes over the Chuska Mountains to the community of Lukachukai, AZ. This pass is one of the most picturesque drives on the Navajo Nation with beautiful green pine trees, brilliant red sand and stone cliffs and provides a magnificent view of the Four Corners region from the top of the mountain. This pass is popular with photographers and locals as a favorite scenic drive.



# PICTURE THIS

## **ANGEL PEAK / KUTZ CANYON**

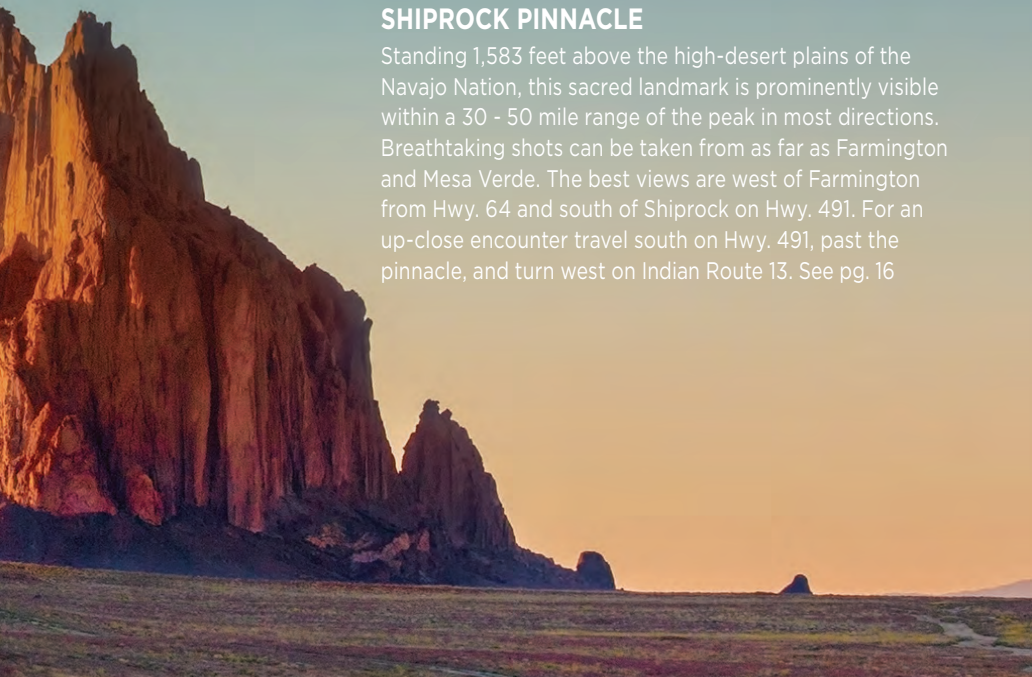
With more than 10,000 acres of rugged terrain and a 7,000-foot peak in the form of an Angel, photographers love to explore this scenic area. Angel Peak is visible for many miles in any direction and is surrounded by the maroon, gray, and yellow mudstone and sandstone found in the Kutz Canyon badlands. Located 15 miles south of Bloomfield and 5.8 miles east of Highway 550. This landscape is a unique subject for photographers especially August through October when dramatic storm clouds roll across the plains. See pg. 15

## **THE BISTI BADLANDS**

The granddaddy of badlands! A quick search online will show the varied terrain and demonstrate why photographers from across the globe travel to shoot the Bisti Badlands. From hoodoos and spires to fossils and petrified logs, the Bisti will not disappoint. On your first time out, we recommend hiking east from the parking lot towards the two red hills. If time is limited head to the right of the red hills for a wonderful section of hoodoos. For a full Bisti experience continue east and to the left of the red hills and then head towards the two black top hills. From this point it is best you explore the land on your own! Pack water, a compass and hike within your ability. See [farmingtonnm.org](http://farmingtonnm.org) for additional information. See pg. 15

## **SHIPROCK PINNACLE**

Standing 1,583 feet above the high-desert plains of the Navajo Nation, this sacred landmark is prominently visible within a 30 - 50 mile range of the peak in most directions. Breathtaking shots can be taken from as far as Farmington and Mesa Verde. The best views are west of Farmington from Hwy. 64 and south of Shiprock on Hwy. 491. For an up-close encounter travel south on Hwy. 491, past the pinnacle, and turn west on Indian Route 13. See pg. 16



# SHOPPING

Looking for retail therapy? Farmington is the retail center of the Four Corners region, featuring a variety of stores, specialty shops, art galleries, and some of the oldest trading posts in New Mexico. Shop Farmington for that special souvenir or gift from the Four Corners. Listed are FCVB members. Visit [FarmingtonNM.org](http://FarmingtonNM.org) for a complete listing.

## Animas Valley Mall

4601 E. Main St.  
(505) 326-2654  
[animasvalleymall.com](http://animasvalleymall.com)

## Artifacts Gallery & The Chile Store

302 E. Main St.  
(505) 327-2907  
[artifacts-gallery.com](http://artifacts-gallery.com)

## Big Rock Trading Post

3761 Hwy. 64  
Fruitland, NM  
(505) 598-5184  
[bigrocktradingpost.com](http://bigrocktradingpost.com)



## Bob French's Navajo Rugs

3459 Hwy. 64  
Waterflow, NM  
(505) 598-5621  
[bobfrenchnavajorugs.com](http://bobfrenchnavajorugs.com)

## Currents

3041 E. Main St.  
(505) 566-2294  
Sells Farmington specific  
souvenirs.

## The Dusty Attic

111 W. Main St.  
(505) 327-7696

## Fifth Generation Trading Co.

232 W. Broadway  
(505) 326-3211  
[southwestshowroom.com](http://southwestshowroom.com)

## Four Corners Harley-Davidson

6520 E. Main St.  
(505) 325-6710  
[fourcornershd.com](http://fourcornershd.com)

## Henderson Fine Art Center Gallery & Humanities Art Gallery

4601 College Blvd.  
(505) 566-3464  
[sanjuancollege.edu](http://sanjuancollege.edu)

## Hogback Trading Company

3221 Hwy. 64  
Waterflow, NM  
(505) 598-5154



## J. A. Jewelers

4005 E. Main St., Suite D  
(505) 599-9400  
[jajewelers.com](http://jajewelers.com)

## M. Moose, Inc.

5920 E. Main St., Suite A  
(505) 325-7800  
[mmoose.com](http://mmoose.com)

## Navajo Trading Company

126 E. Main St.  
(505) 325-1685

## Shiprock Trading Post

527 E. Main St.  
(505) 324-0881  
[shiprocktradingpost.com](http://shiprocktradingpost.com)

## Studio 116

116 W. Main St.  
(505) 801-5889  
[karenellsbury.com](http://karenellsbury.com)

## Toadlena Trading Post & Museum

Hwy. 491 & N19  
Newcomb, NM  
(505) 789-3267  
[toadlenatradingpost.com](http://toadlenatradingpost.com)

## Three Rivers Art Center (TRAC) & Gallery

123 W. Main St.  
(505) 716-7660  
[threeriversartcenter.org](http://threeriversartcenter.org)



# LODGING

CVB Members in orange.  
Area code is (505) unless otherwise specified.

|   | BREAKFAST | POOL | WEEKLY RATES | HANDICAPPED | KITCHENETTES | PETS | Number of Rooms         |
|---|-----------|------|--------------|-------------|--------------|------|-------------------------|
| <b>Anasazi Inn</b><br>903 W. Main, 325-4564   |           |      | ●            | ●           |              |      | 60 Rooms<br>8 Suites    |
| <b>Best Western Plus The Four Corners Inn</b><br>4751 Cortez Way, 564-8100, bwthefourcornersinn.com | ●         | ●    |              | ●           |              | ●    | 66 Rooms                |
| <b>Bluffview Motel</b><br>3700 Bloomfield Hwy., 327-6231  |           |      | ●            |             | ●            |      | 17 Rooms                |
| <b>Brentwood Inn &amp; Garden</b><br>600 E. Broadway, 325-2288, (877) 322-2288, bwigfmn.com         | ●         | ●    | ●            | ●           |              | ●    | 145 Rooms               |
| <b>Budget Inn</b><br>652 E. Main, 326-5521  |           | ●    |              |             |              |      | 34 Rooms                |
| <b>Casa Blanca Inn and Suites LLC</b><br>505 E. La Plata St., 327-6503, casablancaanm.com           | ●         |      | ●            | ●           | ●            |      | 8 Rooms<br>2 BR Cottage |
| <b>Comfort Inn</b><br>555 Scott Ave., 325-2626, choicehotels.com                                    | ●         | ●    |              | ●           |              | ●    | 59 Rooms<br>19 Suites   |
| <b>Comfort Suites</b><br>1951 Cortland Dr., 325-9414, comfortsuites.com                             | ●         | ●    |              | ●           |              |      | 73 Suites               |
| <b>Courtyard by Marriott</b><br>560 Scott Ave., 325-5111, courtyard.com/fmncy                       | ●         | ●    |              | ●           |              |      | 121 Rooms<br>4 Suites   |
| <b>Economy Inn</b><br>332 E. Main, 326-6614   |           |      | ●            |             | ●            |      | 36 Rooms                |
| <b>Encore Motel</b><br>1900 E. Main, 325-5008   |           |      | ●            |             |              |      | 36 Rooms                |
| <b>Fairfield Inn &amp; Suites by Marriott</b><br>2850 E. Main St., 324-0777, marriott.com/FMNF1     | ●         | ●    |              | ●           |              |      | 80 Rooms                |
| <b>Farmington Inn</b><br>510 Scott Ave., 327-0242   | ●         |      | ●            | ●           |              |      | 98 Rooms                |
| <b>Hampton Inn &amp; Suites</b><br>1500 Bloomfield Blvd., 564-3100, farmingtonsuites.hamptoninn.com | ●         | ●    |              | ●           |              |      | 73 Rooms                |
| <b>Holiday Inn Express &amp; Suites</b><br>2110 Bloomfield Blvd., 325-2545, farmington-hotel.com    | ●         | ●    |              | ●           |              | ●    | 101 Rooms<br>2 Suites   |
| <b>Home2 Suites by Hilton</b><br>777 S. Browning, 325-1500, farmingtonbloomfield.home2suites.com    | ●         | ●    | ●            | ●           | ●            | ●    | 96 Suites               |
| <b>Journey Inn</b><br>317 Airport Dr., 325-3548   |           |      | ●            | ●           | ●            |      | 23 Rooms                |

|  | BREAKFAST | POOL | WEEKLY RATES | HANDICAPPED | KITCHENETTES | PETS | Number of Rooms                |
|--|-----------|------|--------------|-------------|--------------|------|--------------------------------|
| <b>Kokopelli's Inn B &amp; B</b><br>206 W. 38th St., 860-3812, 325-7855, bbonline.com/nm/kokopelli | ●         |      | ●            |             | ●            |      | 1 Cave Suite                   |
| <b>La Quinta</b><br>675 Scott Ave., 327-4706, laquintafarmington.com                               | ●         | ●    | ●            | ●           |              | ●    | 1 Apt<br>2 Suites<br>104 Rooms |
| <b>Motel 6</b><br>1600 Bloomfield Hwy., 326-4501, motel6.com                                       |           | ●    |              | ●           |              |      | 134 Rooms                      |
| <b>National 9 Inn</b><br>5915 E. Main, 326-1555  |           |      | ●            | ●           |              | ●    | 32 Rooms                       |
| <b>Quality Inn</b><br>1901 E. Broadway, 325-3700, (800) 4CHOICE                                    | ●         |      | ●            | ●           |              | ●    | 63 Rooms                       |
| <b>Region Inn</b><br>601 E. Broadway, 325-1191, theregioninn.com                                   | ●         | ●    |              | ●           |              |      | 73 Rooms<br>2 Suites           |
| <b>Rimrock Lodge</b><br>2530 Bloomfield Hwy., 327-4433   |           |      | ●            | ●           | ●            | ●    | 96 Rooms                       |
| <b>Rodeway Inn</b><br>1601 E. Broadway, 325-1813, (800) 4CHOICE                                    | ●         |      | ●            | ●           |              | ●    | 60 Rooms                       |
| <b>Royal Inn</b><br>701 Airport Dr., 325-5061  |           |      | ●            |             |              |      | 21 Rooms                       |
| <b>Sage Motel</b><br>301 Airport Dr., 325-7501   |           |      | ●            |             | ●            |      | 40 Rooms                       |
| <b>Silver River Adobe B &amp; B</b><br>3151 W. Main, 325-8219, silveradobe.com                     | ●         |      |              |             | ●            |      | 2 Rooms<br>1 Suite             |
| <b>Soaring Eagle Lodge</b><br>48 Rd 4370, Blanco, 632-3721, soaringeaglelodge.net                  | ●         |      | ●            |             | ●            |      | 11 Cabins                      |
| <b>TownePlace Suites</b><br>4200 Sierra Vista Dr., 327-2442, towneplacesuites.com                  | ●         | ●    |              | ●           | ●            |      | 117 Rooms                      |
| <b>Travel Inn</b><br>1510 W. Main, 325-0233  |           |      | ●            |             |              |      | 33 Rooms                       |



# RV PARKS & SALES

With an average of 273 days of sunshine and a variety of locations to park an RV, Farmington is a popular destination for RV enthusiasts and is packed with unique scenic landscapes, beautiful sunsets, outdoor adventures, plus rest and relaxation. Farmington has been privileged to host thousands of motor homes touring for rallies, conventions, and groups exploring on their own. FCVB member\*

## Desert Rose RV Resort\*

1900 E. Blanco Blvd,  
Bloomfield, NM  
(505) 632-8339

[desertrosefourcorners.com](http://desertrosefourcorners.com)

84 site campground offering 30/50 Amp, tent sites, rental cabins and RV's. Award winning bathrooms and showers. Free Wi-Fi and cable access. A seasonal pool and a year-round spa. Propane available onsite. Pets are welcome and may enjoy our Paw Paw Pet Park.

## Homestead RV Park\*

11 Rd. 6432, Kirtland, NM  
(505) 598-9181

[homesteadrvparknm.com](http://homesteadrvparknm.com)

65 spaces, full hook-ups, big rig friendly, 30 pull-thru sites. 30/50 Amp, free Wi-Fi, Directv with ESPN. Cabin rentals. Restroom, shower and laundry facilities.

## Sundowner Mobile & RV Park\*

219 Airport Dr.  
Farmington, NM  
(505) 327-1671

[sundownerpark.com](http://sundownerpark.com)

33 full hookups, quiet shaded spaces, gravel or asphalt pads. Daily, weekly and monthly rates. Open year-round. Free Wi-Fi. 30/50 Amps. Reservations recommended. Pet restrictions.

## Navajo Lake State Park

See pg. 16





## Westerly RV Park\*

6440 CR 203  
Durango, CO 81301  
(970) 247-1275  
[WesterlyRVpark.com](http://WesterlyRVpark.com)

25 sites, full hook-ups, big rig friendly, 50 & 30 Amp service, free Wi-Fi, pet friendly, lots of trees and picnic tables at each site. Open all year. Westerly guests receive discounts at the adjacent Trimble Spa & Natural Hot Springs.

## San Juan County Fairgrounds McGee Park\*

#41 County Road 5568  
Farmington, NM  
(505) 325-5415

574 on-site RV spaces with electricity and water, and 2000 dry RV spaces. The facility contains a 49,500 sq. ft. convention center, a five-room Multi-Use Building, two indoor arenas and one outdoor arena, plus 400 stalls and pony pens.

# Dump Stations, Propane & Sales

## Circle W Sinclair

2707 E. Main  
Farmington, NM  
(505) 327-4062

## Giant Service Station

3341 E. Main  
Farmington, NM  
(505) 325-2410

## Broadway Conoco

520 E. Broadway  
Farmington, NM  
(505) 327-5611

## Roadrunner Fuels

800 S. Main  
Aztec, NM  
(505) 333-3990  
[roadrunnerfuels.com](http://roadrunnerfuels.com)

## Chisolm Trail RV Sales, Service and Parts\*

993 NM 516  
Aztec, NM  
(505) 334-5500  
[CTRvaztec.com](http://CTRvaztec.com)

# Camping

## Angel Peak

Hwy. 550 and CR 7175  
(505) 564-7600 or  
(800) 842-3127  
[blm.gov/nm](http://blm.gov/nm)

Primitive camping and picnic areas are available with campfire rings, tables and vault toilets. No water or other services available. Located 16 miles south of Bloomfield on Hwy. 550, traveling east on CR 7175 over six miles of gravel road. See pg. 15

## Bisti / De-Na-Zin Wilderness

Hwy. 371 and CR 7297  
(505) 564-7600 or  
(800) 842-3127  
[blm.gov/nm](http://blm.gov/nm)

Primitive camping is possible, no services or water are available. The wilderness area is located 37 miles south of Farmington on Hwy. 371, and 2 miles down CR 7297. See pg. 15

## Chaco Canyon

(505) 786-7014 ext. 221  
[nps.gov/chcu](http://nps.gov/chcu)

A visitor center and campground (49 sites with picnic tables and fire grates) are on-site, but no additional services are offered. The visitor's center is open 8am - 5pm; closed on Thanksgiving, Christmas, and New Year's Day. Hiking trails are open 7am to sunset year-round. Cost is \$16 per car. Camping is \$15 per night. To reserve a camp site visit [recreation.gov](http://recreation.gov) or call 877-444-6777. See pg. 44

## Navajo Lake State Park

36 Road 4110 Unit 1  
Navajo Dam, NM

**Reservations:**  
(877) 664-7787

**Park Office:**  
(505) 632-2278  
[emnrd.state.nm.us/SPD/navajolakestatepark.html](http://emnrd.state.nm.us/SPD/navajolakestatepark.html)

This beautiful State Park features 7 campgrounds with over 240 campsites. Choose from sites near the lake and marinas or below the dam, along the San Juan River. Electric and water hookups as well as handicap accessible sites available. Visit [newmexicostateparks.com](http://newmexicostateparks.com) or [reserveamerica.com](http://reserveamerica.com) for reservations. See pg. 16

**COME IN AND ENJOY  
YOUR ALL-TIME FAVORITES!**

**Moons Over  
My Hammy®**



**Classic Burger**



**505.324.8415**

**OPEN 24/7**

**600 Scott Ave., Farmington, NM**

**DENNY'S IS  
AMERICA'S  
DINER!**



**BEST JAPANESE  
SUSHI & STEAK HOUSE  
IN NEW MEXICO**



**TOMO**

**JAPANESE SUSHI & STEAK HOUSE**

**3500 E. Main St., Farmington, NM 87402 505-278-8486**

**www.tomofarmington.com**

# CLANCY'S IRISH CANTINA



Green Chile Cheeseburger  
"Best Burger in NM"  
— *The Food Network*

Steak  
Sushi Bar  
Gourmet  
Hamburgers  
Family Dining  
Seasonal Patio  
Local Live Music  
Free Internet  
Catering

505.325.8176 • [Clancys.net](http://Clancys.net)



2701 E. 20th Street Farmington



Outstanding Northern New Mexico Cuisine

**Voted #1  
Mexican Restaurant**



*Featuring the Finest Mexican Food in New Mexico*

**Now Serving Breakfast  
Saturday & Sunday 7-10:30 AM**

Mon-Thurs 10:30 am-9 pm    Fri 10:30 am-10 pm  
Open Sat 7 am-10 pm    Sun 7 am-9 pm

**Si Señor Mobile ~ NOW OPEN!**

Mon-Fri 6-10 am • Serving BREAKFAST BURRITOS  
and BISCUIT SANDWICHES

Visit us online for your next catering:

[www.SiSeñorFarmington.com](http://www.SiSeñorFarmington.com)

**505-324-9050**

4015 E. 30th St., Farmington

## CONTINUING A TRADITION OF THE FINEST NATIVE AMERICAN ARTS AND CRAFTS



*Established 1894*



Wholesale and retail Navajo Rugs, Turquoise Jewelry,  
Pottery, Sculpture, Sandpaintings and other unique  
American Indian arts and crafts

SHIPROCK TRADING POST  
Kent and Hillary Morrow  
527 E. Main St.  
Farmington, NM 87401



505-324-0881 tel  
505-324-0882 fax  
[info@shiprocktradingpost.com](mailto:info@shiprocktradingpost.com)  
[www.shiprocktradingpost.com](http://www.shiprocktradingpost.com)





# HAPPENINGS

This calendar features a sampling of 2017 events. Visit [FarmingtonNM.org](http://FarmingtonNM.org) for the complete calendar of events.

## January

### ReDress: Upcycled Style by Nancy Judd

Artist Nancy Judd's couture garments are made from recycled goods and convey the value of consumer consciousness. The exhibition is on display at the Farmington Museum and free to the public till May 6, 2017. 505-599-1174 or [farmingtonmuseum.org](http://farmingtonmuseum.org)

### Technicolor Dreaming: Psychedelic Posters from the Rock and Roll Hall of Fame

Over thirty posters featured in the exhibition and include Jimi Hendrix, the Doors, Led Zeppelin, the Grateful Dead, and Pink Floyd. Admission is free, exhibit on display till March 25, 2017. 505-599-1174 or [farmingtonmuseum.org](http://farmingtonmuseum.org)

### JANUARY 13 -14

### Bares, Broncs & Bulls Spectacular

200 rough stock riders compete for prizes. Event begins at 7:00pm in the McGee Park Memorial Coliseum. 505-287-9534

## February

### ReDress: Upcycled Style by Nancy Judd

See January

### Technicolor Dreaming: Psychedelic Posters from the Rock and Roll Hall of Fame

See January

### FEBRUARY 10 - 12

### Drinking Habits 2

Theater Ensemble Arts presents Drinking Habits 2 by Tom Smith. Sister Augusta and Sister Philamena plot to make their award-winning wine, hiding it from the ever-watchful eye of Mother Superior, all to save an orphanage. A hilarious farce that will keep audiences laughing! Performance takes place at the Totah Theater and starts at 7:30pm, February 10 and 11th and 2:30pm on February 12th. 505-326-2839

### FEBRUARY 18

### San Juan Symphony - Gershwin and the Roaring Twenties

San Juan Symphony will perform at 7:30pm, Henderson Performance Hall at San Juan College. Tickets are adult \$25, seniors \$18, students \$8. 970-382-9753 or [sanjuansymphony.org](http://sanjuansymphony.org)

## March

### ReDress: Upcycled Style by Nancy Judd

See January

Technicolor Dreaming:  
Psychedelic Posters  
from the Rock and Roll  
Hall of Fame

See January

MARCH 31 – APRIL 21

People's Choice  
Art Exhibit

Various Historic Downtown  
locations will display art from  
50 - 100 artists. View the art and  
vote on your favorite pieces.  
505-599-8442 or  
fmntn.org/downtown

April

ReDress: Upcycled Style  
by Nancy Judd

See January

APRIL 8

San Juan Symphony  
- Full Throttle with  
Frautschi

San Juan Symphony joined by  
two-time Grammy nominated  
violinist Jennifer Frautschi.  
Performance at 7:30pm,  
Henderson Performance Hall  
at San Juan College.  
Tickets are adult \$25,  
seniors \$18, students \$8.  
970-382-9753 or  
sanjuansymphony.org



APRIL 8

People's Choice  
& Spring Art Walk

Enjoy an evening in Historic  
Downtown Farmington,  
5:00 to 9:00pm, and take  
part in the final evening of  
this unique art exhibition!  
505-599-8442 or  
fmntn.org/downtown

APRIL 15 – SEPTEMBER 9

Green Revolution

Made available by the  
Smithsonian Institution  
Traveling Exhibition Service.  
Discover creative ways to  
reduce waste and conserve  
energy with multiple hands-on  
learning stations. On display  
till September 9th.  
505-599-1174 or  
farmingtonmuseum.org

APRIL 15

Navajo Rug Auction

Preview nearly 200 rugs of all  
sizes, styles, and price ranges  
on April 14, noon to 4:00pm  
and April 15, noon to 4:00pm.  
Auction starts at 4:00pm on  
April 15 at the Farmington  
Museum.  
505-599-1173 or 505-599-1180



APRIL 21 – JUNE 19

Live Horse Racing

SunRay Park & Casino  
offers live horse racing with  
the finest Quarter Horses  
and Thoroughbreds in the  
Southwest. Monday and  
Friday post time is at 3:00pm,  
Saturday and Sunday post  
time at 1:15pm. SunRay Park &  
Casino is located off Hwy. 64  
between Farmington  
and Bloomfield.  
505-566-1200 or  
sunraygaming.com

May

Green Revolution

See April

Live Horse Racing

See April

MAY 6

Cinco de Mayo Fiesta

Come out to the Farmington  
Civic Center from 12:00 to  
6:00pm for Mariachi bands,  
folk dancing, jalapeno eating  
contest, Chihuahua races  
and more.  
505-599-1197

MAY 26 -28

### Riverfest

Area rivers are celebrated with a festival of live music, food, entertainment, a 10K and 5K run & walk, wiener dog races and river raft rides. Festival takes place along the animas river in Berg Park and Animas Park in Farmington. 505-716-4405 or riverreachfoundation.com

MAY 26 - 29

### Annual Healing Field

Display of 500 flags to honor local, national and personal heroes at the Farmington Boys & Girls Club. 505-860-3843 or sanjuancountyeast@gmail.com

## June

### Green Revolution

See April

### Live Horse Racing

See April

JUNE 1 - OCTOBER 26

### Downtown Makers Market

Located in the heart of Downtown Farmington, the Makers Market features local makers, growers and artists. Market open Thursdays evenings from 4:00pm to dusk. 505-599-8442 or fmntn.org/downtown

JUNE 3 - AUGUST 26

### Summer Terrace Concert Series

Join the Farmington Museum each Saturday evening for live music on the terrace along the Animas River, 6:00pm to 7:30pm. Bring your folding chair and dancing shoes! 505-599-1174 or fmntn.org/museums

JUNE 3

### KidFest

San Juan County's kick-off to summer! KidFest is a day dedicated to kids with tons of fun activities. Event held, 10:00am to 4:00pm, at McGee Park. Entry is \$2. 505-564-3299 or sanjuancountykids.com

JUNE 9

### Summer Art Walk

Come to Historic Downtown Farmington, 5:00pm to 9:00pm, and celebrate summer with art receptions and open houses at many Downtown locations. 505-599-8442

JUNE 15 - JULY 29

### Outdoor Summer Theater

Experience live local theater in a beautiful natural sandstone amphitheater. Performances are held Thursdays, Fridays and Saturdays at 8:00pm at Lions Wilderness Park. 505-599-1148 or fmntn.org/sandstone

## July

JUNE 29 - JULY 4

### 31st Annual Freedom Days Celebration

The Fourth of July is celebrated with special events throughout Farmington. Festivities include fireworks, Family Freedomfest, night parade, Party in the Park, gem & mineral show. 800-448-1240 or farmingtonnm.org

### Outdoor Summer Theater

See June



### Green Revolution

See April

### Summer Terrace Concert Series

See June

### Makers Market

See June

JULY 1

### Outdoor Movies at the Museum: The Goonies

Join the Farmington Museum at 9:15pm for Outdoor Movies at the Museum! Don't forget a chair or blanket, snacks and bug spray. 505-599-1174 or fmntn.org/museums



JULY 28 –AUGUST 6

### Connie Mack World Series

Baseball fans sit alongside pro and college scouts for the best in amateur baseball as teams from the United States and Puerto Rico compete at Ricketts Park in Farmington, NM. Revised 2017 schedule at [cmws.org](http://cmws.org)

## August

### Green Revolution

See April

### Summer Terrace Concert Series

See June

### Makers Market

See June

AUGUST 14 – 20

### San Juan County Fair

Visit the largest county fair in New Mexico! San Juan County Fairgrounds, McGee Park, on Hwy. 64 between Farmington and Bloomfield. 505-325-5415 or [sanjuancountyfair.net](http://sanjuancountyfair.net)

AUGUST 18 – 19

### San Juan Bi-Fly Tournament

This catch and release tournament takes place on the San Juan River in Farmington, NM and has become the premier trout fishing tournament of the Southwest. 505-402-6995



## September

### Makers Market

See June

SEPTEMBER 2 – 3

### Totah Festival Indian Market & Pow Wow

Annual festival featuring Native American artisans from across the Four Corners region and includes an authentic Navajo rug auction and contest pow wow at the Farmington Civic Center. 505-599-1174

SEPTEMBER 9

### Dining with the Dead

Step back in time with San Juan County's early pioneers. Event will take place at Greenlawn Cemetery, 1600 N. Dustin Ave., from 4:00pm to 8:00pm. Tickets are \$25 per person and can be purchased at Howard's Cleaners. 505-325-5931 or 505-860-5165

SEPTEMBER 9

### Brews, Meats & Bands

Enjoy a day at Lions Wilderness Park Amphitheater for the best in Brews, Meats and Bands! This festival will take place from 12:00noon to 7:00pm. You must be 21 or over. Tickets \$30.00. [bmbfestival.com](http://bmbfestival.com)

SEPTEMBER 23 - 24

### Harvest Wine Festival at Wines of the San Juan

Join Wines of the San Juan for two days of live music, internationally awarded wine, great food, and local artisans. 505-632-0879 or [winesofthesanjuan.com](http://winesofthesanjuan.com)



SEPTEMBER 30

### A Real Night at the Museum

Enjoy a real night at the Farmington Museum, 4:00pm to 7:00pm. Enjoy live music, tractor rides and traditional hands-on activities and crafts that bring the past alive. Admission is free. 505-599-1174 or [fmtn.org/farmingtonmuseum](http://fmtn.org/farmingtonmuseum)



## November

### Gateway to Imagination

See October

**NOVEMBER 18**

### Turkey Trot & Gobble Wobble

5K Turkey Trot and a 2 Mile Gobble Wobble in Downtown Farmington. Fun for all ages, this event includes children's carnival games, face painting and more. Cost is \$20. 505-599-1184

**NOVEMBER 25**

### Holiday Art Walk & Small Business Saturday

Visit Historic Downtown and celebrate the holiday season as you show support for small businesses and enjoy art receptions. 505-599-8442

### NOVEMBER 29 - DECEMBER 2 Festival of Trees

Explore a winter wonderland amidst an indoor forest of artfully decorated Christmas trees. Enjoy special events and much more at the Farmington Civic Center. 505-325-8154

### NOVEMBER 30 Christmas Parade

Farmington's annual lighted Christmas parade begins at 5:45pm and runs through Historic Downtown Farmington along Main Street. 505-325-0279

## October

### Makers Market

See June

**OCTOBER 7 - JANUARY 6, 2018**

### Gateway to Imagination

This annual National Juried Art Competition attracts fine artists from across the country. The show will feature approximately 100 works through January 6, 2018 at the Farmington Museum. 505-599-1174 or [fmtn.org/farmingtonmuseums](http://fmtn.org/farmingtonmuseums)

### OCTOBER 7 Road Apple Rally

Annual mountain bike race offering pro, veterans and beginners a test of skill on a 30 or 15 mile course through canyons and arroyos of the Glade Run Recreational Area. The race begins at 8:00am in Lions Wilderness Park. 505-599-1184 or [roadapplerally.com](http://roadapplerally.com)

### OCTOBER 13 Fall Art Walk & Fundraiser

Explore Historic Downtown, 5:00pm to 9:00pm, and enjoy the fall with art receptions and open houses at many Downtown locations. 505-599-8442

### OCTOBER 13 - 14 Four Corners Storytelling Festival

Slow down the pace, kick back, and listen to tales told by some of the very best national and local storytellers. Festival held at Farmington Public Library and the Totah Theater. 505-599-1270 or [infoway.org](http://infoway.org)

### OCTOBER 31 Boo-Palooza

Family friendly Halloween party in Historic Downtown Farmington from 4:00pm to 6:00pm! Enjoy games, a dance with live DJ, costume contests and of course trick or treating. 505-599-1197

# December

## Gateway to Imagination

See October

### DECEMBER 1

#### Riverglo

Celebrate the holiday season with a stroll along the river with carolers and live performances as luminarias light the trails along the Animas River. Berg Park, 6:00 to 8:00pm. 505-716-4405

### DECEMBER 2

#### San Juan College Luminarias

Walk or drive through thousands of luminarias as they light the campus and music fills the air, 6:00pm to midnight. 505-566-3403

### DECEMBER 3

#### Miracle on Main Street

Celebrate the season at the Farmington Civic Center. Event starts at 2:00pm with lots of activities to get you into the holiday spirit. There will be a tree lighting, ice skating rink, caroling, Santa and much more! 505-599-1144 or [fmrtn.org/civiccenter](http://fmrtn.org/civiccenter)

### DECEMBER 16

#### Reindeer Romp & North Pole Stroll

5K Reindeer Romp and 2 mile North Pole Stroll at Orchard Plaza in Historic Downtown Farmington, 4:00pm to 6:00pm. Offering children's winter carnival games, live holiday music, Santa and more! 505-599-1184

### DECEMBER 16

#### Audubon Christmas Bird Count

Join birders, 8:00am to 2:00pm, at the Riverside Nature Center and take part in this nationwide project. 505-599-1422 or [fmrtn.org](http://fmrtn.org)

### DECEMBER 22

#### Live Navajo Nativity

This annual live nativity uses traditional Navajo clothing and live animals and is presented entirely by children at the Four Corners Home for Children, 2103 W. Main St., in Farmington, from 6:00pm to 8:00pm. 505-325-0255, 888-325-0255 or [navajoministries.org](http://navajoministries.org)







Travel Back in Time and Experience the  
Most Exciting Old West Adventure in New Mexico!

## The Most Exciting Day Trip

Imagine taking a day trip back to the 1880's on  
America's Highest and Longest Narrow Gauge Railroad!  
Join us for the trip of a lifetime and take a ride through  
history from Chama, New Mexico or Antonito, Colorado.

[WWW.NEWMEXICOTRAIN.COM](http://WWW.NEWMEXICOTRAIN.COM)



TOLL FREE: 1.888.286.2737

**CUMBRES & TOLTEC**  
SCENIC RAILROAD  
RESTORED AND VINTAGE LOCOMOTIVES



**VOTED #1 BEST TRAIN RIDE IN AMERICA  
BY USA TODAY READERS!**

TRAINS DEPART DAILY MAY 27 – OCTOBER 22, 2017.

# IMPORTANT NUMBERS

## FOUR CORNERS REGIONAL AIRPORT

(505) 599-1394  
[fmtn.org/iflyfarmington](http://fmtn.org/iflyfarmington)

## Great Lakes Airlines\*

(800) 554-5111  
[flygreatlakes.com](http://flygreatlakes.com)

## SHUTTLES

**ABQ Express**  
(505) 850-3880  
[abqexpress.com](http://abqexpress.com)

## CAR RENTALS

**Hertz Rent-A-Car\***  
(505) 327-6093  
(800) 654-3131  
[hertz.com](http://hertz.com)

Four Corners Regional Airport

## PUBLIC TRANSPORT

**Red Apple Transit**  
(505) 325-3409  
[fmtn.org](http://fmtn.org)

## TAXI SERVICE

**Lou Go's Taxis,  
Limos & Vans\***  
(505) 324-6568  
[lou-gos.taxi](http://lou-gos.taxi)

\* FCVB Member

## AREA VISITOR INFORMATION

**Farmington Convention  
& Visitors Bureau**  
(800) 448-1240  
(505) 326-7602

**Aztec Visitor Center**  
(505) 334-9551

**New Mexico Tourism  
Department**  
(505) 827-7336

**New Mexico State Parks**  
(888) 667-2757

## CHAMBERS OF COMMERCE

**Aztec (505) 334-7646**  
**Bloomfield (505) 632-0880**  
**Farmington (505) 325-0279**  
**Kirtland (505) 598-5818**

## AREA SENIOR CENTERS

**Aztec (505) 334-2881**  
**Blanco (505) 632-9146**  
**Bloomfield (505) 632-8351**  
**Farmington (505) 599-1380**  
**Lower Valley/Kirtland  
(505) 598-0054**

## HEALTH CARE SERVICES

**Reliance Medical Group**  
(505) 566-1915

**San Juan Regional  
Medical Center**  
(505) 609-2000

**Urgent Care Center**  
(505) 609-6495

**Veterans Outpatient Clinic**  
(505) 326-4383

## IMPORTANT NUMBERS

**Fire, Medical or  
Police Emergency**  
911

**Police (non-emergency)**  
(505) 334-6622

**Weather & Road Conditions**  
(800) 432-4269



# Room to breathe.

After a day in the Four Corners,  
come relax with us!



Spacious new lobby and atrium • Indoor pool • Hot breakfast  
WiFi • Gym/fitness center • Group rates and packages available

**505.564.3100**

1500 Bloomfield Blvd. • Farmington, NM 87401



tripadvisor 2016  
CERTIFICATE OF EXCELLENCE



# Farmington's Family Destination



Free Internet • Free Breakfast Buffet • Business Center  
Free Airport Shuttle • Close to Riverwalk & Trails  
Small Meeting Facility • 100% Smoke-Free  
AAA, AARP, Military Discounts • Heated Outdoor Pool & Spa  
Tequila's Restaurant & Lounge

888.325.1191 • 505.325.1191  
601 E. Broadway, Farmington  
reservations@theregioninn.com  
www.TheRegionInn.com



# Farmington's Home Away From Home



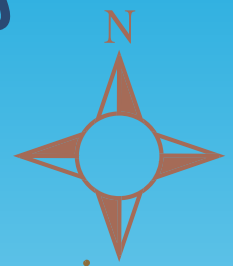
Full Kitchens  
Restaurants  
Shopping  
Airport Shuttle  
Fitness Room  
Indoor Pool  
Hot Tub

Free Breakfast,  
Internet, and  
Local Calls



505.327.2442  
4200 Sierra Vista Drive  
Farmington, NM 87402  
[www.Marriott.com/fmnts](http://www.Marriott.com/fmnts)

# FOUR CORNERS AREA MAP



**KEY**

- Point of Interest
- Highways
- ⋯ Scenic Route
- ⋯ Continental Divide
- ~ Rivers and Lakes
- City or Town