

# FARMINGTON NEW MEXICO

**FARMINGTON**  **N**

*Jolt Your Journey®*

**2021-22 VACATION GUIDE**

*[farmingtonNM.org](http://farmingtonNM.org)*

# THE ADVENTURE STARTS HERE



## Stop by our Visitor Center

- Adventure guides
- Maps & brochures
- Attraction & activity info
- Friendly, informative staff

**FARMINGTON** 

*Convention & Visitors Bureau*

3041 E. Main, Farmington  
800.448.1240  
FarmingtonNM.org



# The Links of Enchantment




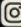
[RiverviewGolf NM.com](http://RiverviewGolf NM.com)

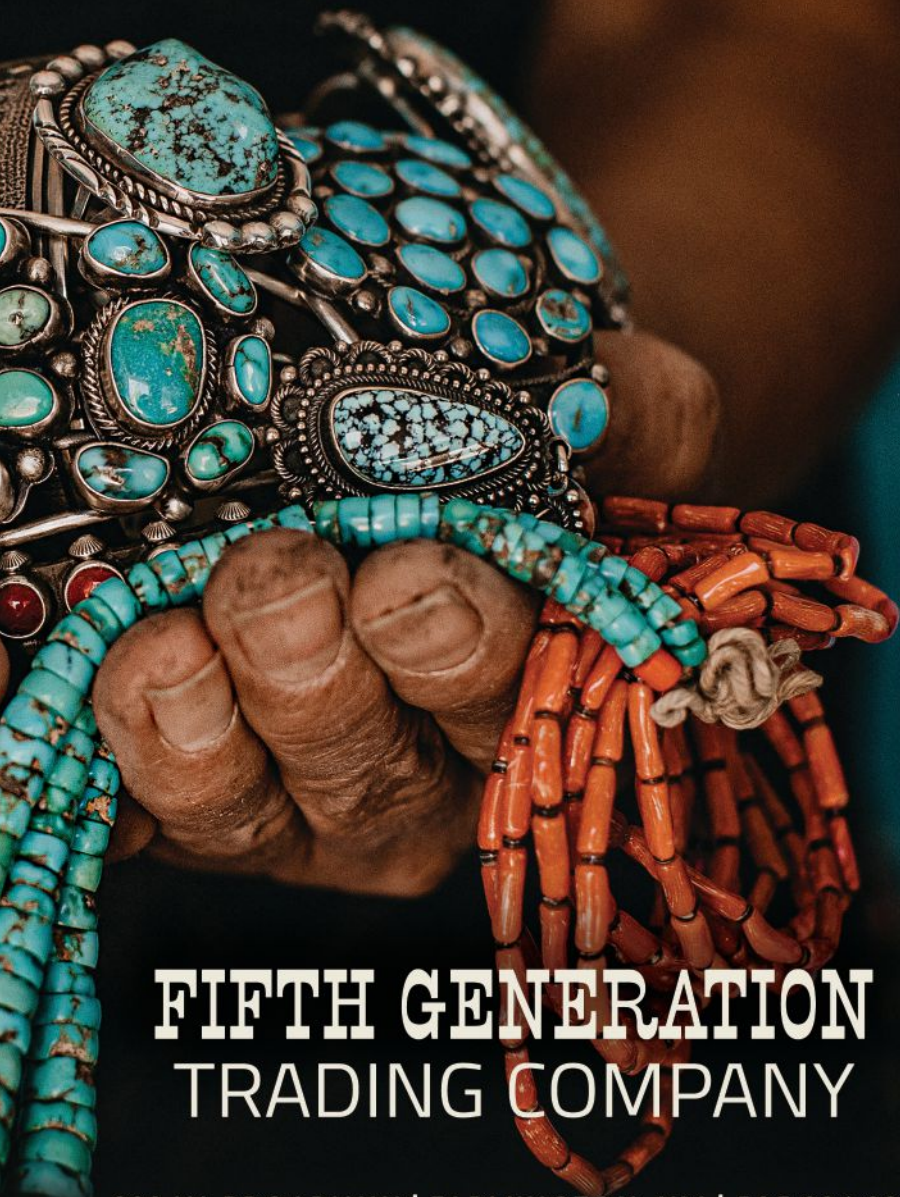
# *experience*



550 MAIN STREET | PARK CITY, UT | 435.644.9177

# *the tradition*

 @tannertradingco  @tannertrading TANNERTRADING.COM



**FIFTH GENERATION  
TRADING COMPANY**

232 W. BROADWAY | FARMINGTON, NM | 505.326.3211



**E3 Children's Museum & Science Center**



**Museum of Navajo Art & Culture**



**Harvest Grove**



**Riverside Nature Center**



**Farmington Museum**

3041 E. Main Street  
Farmington, NM 87402  
505.599.1174  
farmingtonmuseum.org



# FARMINGTON MUSEUM



**Sustaining Foundation  
Members get free admission  
to over 1000 museums  
nationwide... and more!  
505.599.1173  
fmfound@gmail.com**

# FARMINGTON

*Convention & Visitors Bureau*

## TABLE OF CONTENTS

<b>Adventures Sculpted by Nature</b> .....	10
<b>Adventure is an Attitude – Pick Yours!</b> .....	14
<b>Make a Splash</b> .....	15
<b>Good Things Come to Those Who Bait</b> .....	17
<b>Fuel the Adrenaline Junkie</b> .....	18
<b>No Gear? No Problem!</b> .....	22
<b>The Sporty Side of Farmington</b> .....	23
<b>Don't Be Outfoxed by Piñon Hills Golf Course!</b> .....	26
<b>Let Us Guide You</b> .....	32
<b>MAPS</b>	
<b>Farmington Map</b> .....	34
<b>Area Map</b> .....	36
<b>Study Hall, Farmington Style</b> .....	42
<b>Points of Interest and National Parks</b> .....	43
<b>Museums</b> .....	45
<b>Native Cultures of the Area</b> .....	48
<b>Adventures for the Young and Young at Heart</b> ..	50
<b>Swag in a Bag</b> .....	54
<b>History Made New</b> .....	56
<b>A Run of Good Luck</b> .....	58
<b>Refuel &amp; Refresh</b> .....	60
<b>Kick Back and Stay a While</b> .....	62
<b>Numbers to Know</b> .....	66

### **PUBLISHER'S BOX**

**Publisher:** Lunar Cow Publishing

**Cover Photo:** Land of Enchantment Photography, LLC

**Photographers:** Bob Castellino, Ned James, Farmington Museum Collection, Jeff McCall, Major Graham, Peter Gonzales, FCVB, City of Farmington, Shutterfreak, Zia Media Group, Derrick Kosea

# WELCOME TO **FARMINGTON**

*Jolt Your Journey*<sup>®</sup>

**#JOLTYOURJOURNEY**  
**#PLAYFARMINGTON**  
**#STAYFARMINGTON**

For event and festival information, visit  
**[farmingtonnm.org/events](http://farmingtonnm.org/events)**



**W**elcome to Farmington! We are proud to be known as a place where outdoor lovers and active families thrive amidst endless adventures! In a single day, one can cast a line as the sun comes up over the world-famous Red Chile waters of the San Juan River, experience the adrenaline rush of rock crawling in the nationally ranked Chokecherry Canyon, and travel hundreds of years into the past with a visit to Salmon Ruins. See, we don't think it's boasting to say we have it all here. Unique, high-desert hiking. Over 100 miles of mountain biking trails. Crazy beautiful landscapes and awe-inspiring cultural treasures to explore.

In fact, as you flip through the following pages, we think you will be surprised at just how much there is to see and do here, but that's Farmington. From outdoor adventures to a vibrant art community and genuine Southwestern hospitality, we are a town that strives to exceed people's expectations. In fact, it's right on our welcome sign! We don't just want to deliver those little positive, unexpected surprises—or JOLTS as we like to call them — we take pride in it. Our goal is to raise your vacation from good to unforgettable.

So, come on. Let us surprise you. We're up for the challenge.

The Farmington Convention and Visitors Bureau team is here to help plan your next jolt-worthy trip. Call us at (800) 448-1240, visit our website [farmingtonnm.org](http://farmingtonnm.org), or stop by 3041 East Main Street to get started.



# ADVENTURES SCULPTED BY NATURE

**W**elcome to a place so spectacular it could only be sculpted by nature itself! From the eerie, otherworldly beauty of the Bisti/De-Na-Zin Wilderness to the familiar formations of Monument Valley, which have graced movie screens since 1925, the spectacular landscapes in the Farmington area will steal your breath away with their rugged, untamed beauty. Whether you hike the endless trails, explore a cultural treasure like Canyon de Chelly, or catch a once-in-a-lifetime photo of the iconic Shiprock Pinnacle, this is a place that will linger with you long after you have left it.

Visit [farmingtonnm.org](http://farmingtonnm.org) to learn more about the scenic hiking areas in and around Farmington.



### **ANGEL PEAK SCENIC AREA**

**Hwy 550 and CR 7175**

**(505) 564-7600 • [blm.gov/nm](http://blm.gov/nm)**

A 40-million-year-old geological formation surrounded by badlands; the “Angel” raises its wings over the shaded colors of the surrounding high desert. There are overlooks and trails to explore; popular activities include hiking, photography, and camping. Primitive camping areas are available with campfire rings, tables and vault toilets. Leashed pets permitted. No camping fees or reservations. OHV limited to existing roads. Located 16 miles south of Bloomfield on Hwy 550, traveling east on CR 7175, over six miles of gravel road.

### **AH-SHI-SLE-PAH WILDERNESS**

**US Highway 550**

**7.5 miles northwest of Nageezi, NM**

**(505) 564-7600 • [blm.gov/nm](http://blm.gov/nm)**

Scenic badland area of rolling, water-carved clay hills. From Alien Throne and King of Wings to Valley of Dreams, this wilderness area is known across the globe. To access, turn west onto NM 57 from Hwy 550. Drive south/southwest 13.5 miles, at which point NM 57 forms the wilderness boundary. For the next 4 miles, the BLM-managed area will be on your right. There are no developed trails. It is advised to bring GPS/compass, water, sunscreen. Leashed pets permitted.





**AZTEC NATURAL ARCHES**  
Aztec and San Juan County, NM  
(505) 334-9551 • [aztecnm.com](http://aztecnm.com)

Natural arches and bridges have a special draw for landscape photographers. Over 300 natural sandstone arches and bridges have been identified near Aztec, divided among 24 canyon tours. Ideal for hiking and photography. Visit the Aztec Visitor Center for maps.



**BISTI/DE-NA-ZIN WILDERNESS**  
Hwy 371 and CR 7297  
(505) 564-7600 • [blm.gov/nm](http://blm.gov/nm)

Petrified logs and other fossils are scattered amidst unique geological features in this federally designated wilderness area. Photographers come from across the globe to capture this unique landscape. An excellent selection of formations, including the Egg Garden, can be found 2 miles east of the parking lot. Visit [farmingtonnm.org](http://farmingtonnm.org) for videos and tips on visiting. Plan for at least half a day to explore the badlands properly. Bring water, sunscreen and a GPS or compass. Cell service is sparse. Primitive camping is possible, no water available, vault toilet in parking area. Mechanized or motorized vehicles not permitted, including mountain bikes, drones, strollers or other wheeled devices. It is recommended that pets remain leashed. The main parking area is located 37 miles south of Farmington on Hwy 371, 2 miles down CR 7297, and left on CR 7290.



**CANYON DE CHELLY NATIONAL MONUMENT**  
Chinle, AZ  
(928) 674-5500 • [nps.gov/cach](http://nps.gov/cach)

The National Park Service and Navajo Nation work in partnership to manage this special place. No entry fee to drive the North or South Rim or to hike the White House Trail. Tours by private companies are available. Leashed pets permitted, in designated areas. Wheelchair accessibility at 5 overlooks. Located 145 miles southwest of Farmington, 3 miles east of US Hwy 191 on Navajo Route 7. Check website for hours and prices.



## MONUMENT VALLEY

Navajo Tribal Park  
Monument Valley, UT

(435) 727.5870 • [navajonationparks.org](http://navajonationparks.org)  
[discovernavajo.com](http://discovernavajo.com)

Access to the valley is limited; vehicle and horseback tours led by Navajo guides can be arranged. No backcountry hiking or biking is allowed. Located 131 miles west of Farmington on Hwy 64 to Hwy 160 and north on Hwy 163 at Kayenta, AZ. Check website for current hours and prices.



## NATURAL BRIDGES NATIONAL MONUMENT

Hwy 275 • Blanding, UT

(435) 692-1234 • [nps.gov/nabr](http://nps.gov/nabr)

Best viewed from overlooks along a 9-mile scenic drive or by hiking trails. Trails range from 0.5 miles to 10 miles round trip. The park is open year-round. Leashed pets are permitted on paved surfaces and paved viewpoint trails. Bridge viewpoint trails are paved and wheelchair accessible.

## SHIPROCK PINNACLE

Hwy 491/Indian Rt 13 • Shiprock, NM

(928) 810-8501 • [discovernavajo.com](http://discovernavajo.com)



The most iconic landmark in New Mexico! This magnificent geological exposed volcanic rock rises 1,583 feet above the high-desert plain. The peak is accompanied by two radiating 150-foot-high volcanic dikes. The site is sacred to the Navajo people, who call it Tsébit'a'í, the rock with wings. Because of the sacred nature, climbing is not allowed. Leashed pets permitted. Best viewed from State Highway 64, U.S. Highway 491 and Indian Route 13.

# ADVENTURE IS AN ATTITUDE - PICK YOURS!

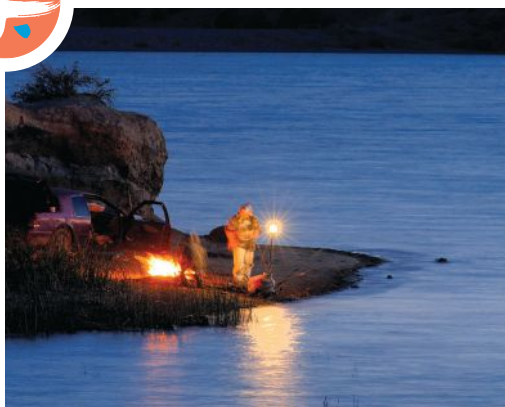


**A**dventure. The word means very different things to different people. Some picture standing on a pristine riverbank at dawn doing battle with the monster fish on their line. For others, it's challenging themselves by riding their mountain bike through a sandy arroyo or by seemingly defying gravity rock crawling up a massive boulder. A simple hike through the stunning terrain of the high desert is an adventure to some. But for adventure seekers, one thing is universally true: Seeking it isn't just a way of life, it's an attitude that no one can pick for you. You have to pick your own. To find an experienced, fellow adventurer to guide you, turn to **Let Us Guide You** on pg. 32.

Visit [farmingtonnm.org](http://farmingtonnm.org) to discover all of the outdoor adventures waiting for you in Farmington.

## MAKE A SPLASH

As anglers, fly and reel fishers from all around the world have discovered, the Farmington area offers some of the best year-round fishing you can find. Home to the famous “Red Chile” waters of the San Juan River, the area has long been a draw for those looking to make the catch of a lifetime, but it is also growing in popularity for those interested in kayaking, SUP, boating and even rafting on the region’s three rivers and five lakes. So, if you are looking for the serenity of rafting through breathtaking scenery or the thrill of having a giant fish on the line, Farmington is the perfect place to make a splash! Visit [farmingtonnm.org](http://farmingtonnm.org) to learn more about area lakes, rivers and fishing hot spots.



### **ANIMAS RIVER WHITE WATER PARK ANIMAS/BERG PARK** **(505) 599-1197**

Perpetual flow stream good for canoes, kayaks and rafts depending on water flow. During spring runoff, park includes Class I and II rapids along stretch between Animas and Berg parks. Put-in for park located at Animas River Walk parking lot near All Veterans Memorial Park off South Tucker.

### **LAKE FARMINGTON** **8120 E. Main St • Farmington, NM** **(505) 599-1197** **[fmntn.org/lakefarmington](http://fmntn.org/lakefarmington)**

This 250-acre lake, minutes from downtown, is open year-round for fishing and seasonally for swimming, electric and non-motorized watercraft. The Beach at Lake Farmington offers water slides and trampolines. Also popular around the lake are mountain biking, hiking, horseback riding, OHV, camping and bird watching. Check website for hours and access fees.

### **JACKSON LAKE** **436 Hwy 170 • Farmington, NM** **(888) 248-6866**

Located 5 miles north of Farmington on the west side of NM 170 (La Plata Highway). Access is by foot only, 1/4 mile hike from the parking lot. The New Mexico Department of Game and Fish stocks about 13,000 catchable-sized rainbow trout during fall, winter, and spring months. For regulations, visit [wildlife.state.nm.us](http://wildlife.state.nm.us)

### **MORGAN LAKE AND CUTTER DAM RESERVOIR** **(928) 871-6451 • [nndfw.org](http://nndfw.org)**

Located on the Navajo Reservation just outside Farmington, both lakes are open year-round. Morgan Lake is 20 miles west of Farmington. Species include largemouth bass, channel catfish and bluegill. Cutter Dam Reservoir, 26 miles east of Farmington, has rainbow trout, brown trout and kokanee salmon. A Navajo Nation fishing permit is required for both lakes. Boats must have a Navajo watercraft permit. Contact the Navajo Fish & Wildlife Department.

## NAVAJO LAKE STATE PARK

Navajo Dam, NM

(505) 632-2278 • [emnrd.state.nm.us](http://emnrd.state.nm.us)

With 150 miles of shoreline and over 21,000 acres of land, Navajo Lake State Park crosses the New Mexico and Colorado state border and features sections of the famous San Juan River. Activities within the park include camping, boating, sailing, fishing, salmon snagging, swimming, scuba diving, water skiing, wildlife viewing and hiking. Leashed pets permitted. Wheelchair accessibility in campsites, restrooms and the visitor center. The park is located 45 miles northeast of Farmington on Hwy 173, 550 and 511.



## SPECIAL TROUT WATERS & THE SAN JUAN RIVER

Navajo Lake State Park

Navajo Dam, NM

[emnrd.state.nm.us](http://emnrd.state.nm.us)

The world-famous “Special Trout Waters” of the San Juan River is designated as Red Chile Water from Navajo Dam 3.75 miles downstream to the Crusher Hole Day Use Area. Red Chile Waters are catch-and-release only. Tackle is restricted to artificial fly or lure with a single barbless hook and can only use two flies or lures on a single line. Ample pools, runs and riffles makes it ideal for year-round fly fishing. Statewide angling regulations apply to river downstream of the Crusher Hole Day Use Area, which has a daily bag limit of 5 trout per day and any legal bait and tackle can be used.



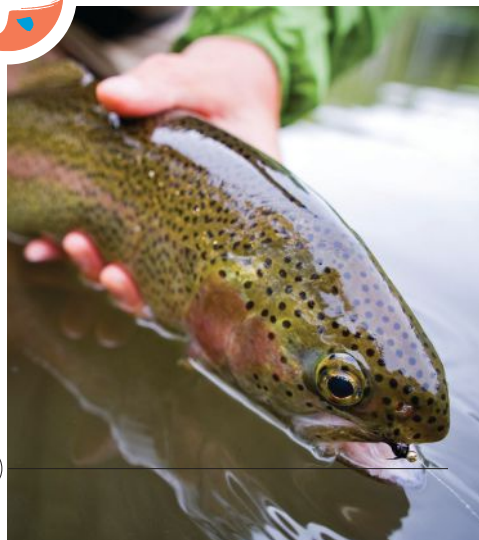
## MAJESTIC ENCHANTMENT

221 Hwy 511 • Blanco, NM

(505) 801-9163

[majesticenchantment.com](http://majesticenchantment.com)

Enjoy year-round fly fishing for trophy German brown and rainbow trout along this privately owned section of the San Juan River. Visit website for hours and rates.







Visit [farmingtonnm.org](http://farmingtonnm.org) to learn more about the fishing adventures found in Farmington.

## GOOD THINGS COME TO THOSE WHO BAIT

**L**ocation, location, location. Perhaps more than with any other sport, fishing is all about finding that perfect spot to make a once-in-a-lifetime catch. The Farmington area already offers some of the best fishing anywhere, but finding the right outfitter or guide can help make an already great day fishing even better! From offering accommodations right on the water to sharing insider information on where the fish are biting and which lures will work best for you, an experienced, knowledgeable outfitter or guide can help turn your fishing whopper into a whopping, big fish!

**ARCOM OUTFITTING & GUIDE**  
3802 Windsor Dr • Farmington, NM  
**(505) 860-2325**  
[martinez\\_art@hotmail](mailto:martinez_art@hotmail.com)

A must for anyone looking to learn the secrets of the San Juan River! Owner Art Martinez is known as the fish whisperer because of his unique way of teaching how to fly fish for rainbows and brown trout.

**SOARING EAGLE LODGE & GUIDE SERVICE**  
#48 Rd 4370 • Blanco, NM  
**(505) 632-3721**  
[soaringeaglelodge.net](http://soaringeaglelodge.net)


Popular lodge and guide service located along the banks of the San Juan River. Widely known for exceptional food, breathtaking scenery and friendly and knowledgeable guides.

**NAVAJO LAKE MARINA**  
#42 CR 4110 • Navajo Dam, NM  
**(505) 632-3245 / (800) 582-5687**  
[navajomarina.com](http://navajomarina.com)

The hub of activity at Navajo Lake, this marina is located on the southern end of the reservoir in Navajo Lake State Park. This full-service, award-winning marina offers fishing guides, boat rentals, supply/grocery store, restaurant and so much more. Visit website for details.



# FUEL THE ADRENALINE JUNKIE



**T**he rugged high-desert terrain around Farmington doesn't just make for great hiking. Its sandy arroyos, steep hills, dunes and slickrock boulders also make it the ideal place for mountain bikers, off-roaders and motocross enthusiasts to fuel their adrenaline addiction any time of year! With thousands of acres of public lands, Farmington is home to premiere events such as the Road Apple Rally, one of the oldest mountain bike races in the country, and the World Extreme Rock Crawling Championship (WE Rock). Whether they find adventure on two wheels or four, both experienced riders and newbies will want to make Farmington their go-to spot when looking to top off their adrenaline tanks!

For information on additional trails and maps, visit [farmingtonnm.org](http://farmingtonnm.org).

## BEST IN BIKING

### ALIEN RUN

This trail is for mountain bikes only and features just over 16 miles of scenic single track, slickrock and tight turns. Access the trails from Hart Canyon, 4 miles north of Aztec on US Hwy 550, then east on CR 2770. Aztec, NM hosts the Alien Run Mountain Bike Race each spring.

### ANASAZI LOOP

The Anasazi Loop is a fast-paced single track course of 2.8 miles. There are no major climbs or descents, just gentle grades, making for a fast and fun loop. The trail is located in Farmington, north of Piñon Hills Blvd, along College Blvd. Easiest access is from the Hood Mesa Trail parking lot. You can also tap in anywhere north and east of the Farmington BLM Field Office. The loop is ridden counter-clockwise.

### ROAD APPLE RALLY COURSE

The Road Apple Rally is an annual mountain bike race held in Farmington the first Saturday in October. The course features a fun 15-mile loop through the Glade Run Recreation Area. The diverse terrain, beauty of the high-desert plateau and minimal climbing creates a scenic, fast and fun ride that all can enjoy. Access the course off College Blvd north of Piñon Hills Blvd at Lions Wilderness Park. Ride pavement for about 1.5 miles on College Blvd. Where College Blvd meets Hood Mesa Trail at a four-way junction, go straight onto a dirt road. Follow the dirt road and watch for the Road Apple Rally carsonite posts.





## BEST IN OFF-ROADING

### ARCH CANYON TRAIL

Arch Canyon is a 12-mile canyon in the Glade Run Recreation Area. This trail includes varying terrain and several natural arches to view, and box canyons through washes with big cliff views. It takes 45 minutes to run through as a loop. Access Arch Trail by turning off Piñon Hills Blvd onto College Blvd, heading north. At the end of the pavement, head west just north of Brown Springs. Once you go over the big blind hill, take a left then a quick right. That road will take you to the Arch Trail carsonites.

### CHOCHECHERRY CANYON TRAILS

From dirt and gravel roads to extreme rock crawling, Chokecherry Canyon, located within the Glade Run Recreation Area, features the most scenic and technical trails found in New Mexico. The service and entry roads are perfect for those new to off-roading. The Upper Rim Trail is a great option for drivers with above-average skills. Seasoned, highly qualified drivers with excellent skills who are comfortable on extremely technical trails where rollover possibilities exist should take on the Waterfall Trail. Trails can be accessed in Farmington by turning onto Glade Road from Piñon Hills Blvd or at the intersection of College Blvd and Hood Mesa Trail.



### DUNES RECREATION AREA

The Dunes Recreation Area, located just south of Farmington on NM Hwy 371, features the top ATV, side-by-side and dirt bike trails in the region. Situated at the base of the bluffs, this high-desert playground features miles of trails amidst pale yellow sand dunes and stunning embankments of juniper and cedar. The local ATV and dirt bike community has shaped numerous trails within this 800-acre recreation area, showcasing large sand dunes, steep to gentle hillsides and sandy arroyos. This popular OHV area is home to annual off-road dirt bike endurance races and provides riders of all skill levels a place to play, test their endurance and improve their skills.

# NO GEAR? NO PROBLEM!

**T**hese local businesses are members of the FCVB and offer friendly service, knowledge of local trails and equipment rentals. For fishing equipment rental, see pg. 17 and for guided services, see pg. 32.

## **505 CYCLES**

4301 E. Main St • Farmington, NM  
(505) 326-0429 • [505cycles.com](http://505cycles.com)

Offers specialized bicycles and accessories, repair and service, as well as daily and weekly mountain bike rentals.

## **THE OUTDOOR EQUIPMENT RENTAL CENTER**

4601 College Blvd • Farmington, NM  
(505) 566-3221  
[sanjuancollege.edu/oerc](http://sanjuancollege.edu/oerc)

Rent outdoor equipment such as mountain bikes, tents, kayaks and snowshoes. Have your bike and snow equipment serviced by a certified technician. Call for hours.

# THE SPORTY SIDE OF FARMINGTON



Visit [farmingtonnm.org](http://farmingtonnm.org)  
and [fmtn.org](http://fmtn.org) for additional  
information and even more  
places to play!

It is no mystery why outdoor lovers and active families thrive in Farmington. From the nationally recognized Piñon Hills Golf Course to stunning Ricketts Park, home to the Connie Mack World Series, to the county's expansive rodeo arena and fairgrounds, McGee Park, this is an area which embraces a little friendly competition in all its forms. If your game is baseball, racquetball or even pickleball, you will find it here. Prefer disc golf or footgolf to regular golf? Farmington has you covered. In an area where you already get to pick between some of the best fishing, hiking and rock climbing anywhere, your options are just as wide open and challenging when it comes to the sporty side of Farmington.

## GOLF

**CIVITAN MUNICIPAL GOLF COURSE**  
2200 N. Dustin Ave • Farmington, NM  
(505) 599-1194 • [fmtn.org/civitan](http://fmtn.org/civitan)  
9-hole par 3 course with a 9-hole footgolf course.

**PIÑON HILLS GOLF COURSE**  
2101 Sunrise Pkwy • Farmington, NM  
(505) 326-6066 • [pinonhillsgolf.com](http://pinonhillsgolf.com)

Known as a legend in the desert, Piñon Hills Golf Course offers an award-winning course at affordable rates. Regularly ranked as one of the best municipal golf courses in the US by *Golfweek Magazine*, *Golf.com*, and *Golf Digest*, this is a must-play muni. Regulation 18 holes. ADA golf carts available for rent.

**RIVERVIEW GOLF COURSE**  
#64 Rd 6520 • Kirtland, NM  
(505) 598-0140  
[riverviewgolfnm.com](http://riverviewgolfnm.com)

Regulation 18 holes. Golf cart available for special needs. Footgolf course available. Pro shop and snack bar.

**SAN JUAN COUNTRY CLUB**  
5775 Country Club Dr • Farmington, NM  
(505) 327-4451  
[sanjuancountryclub.org](http://sanjuancountryclub.org)

Home of the San Juan Open, this 18-hole golf course is complete with driving range and practice greens. Private course, offers reciprocity.



## DISC GOLF

### **AZTEC DISC GOLF COURSE**

1301 Spanish Trl • Aztec, NM

**(505) 334-9551 • [aztecnm.com](http://aztecnm.com)**

Located near Tiger Lake, offering an 18-basket course. The course offers long par 4 and some par 5 distances. Beginner and intermediate tee boxes have been tentatively laid out on the course.

### **LIONS WILDERNESS PARK**

#### **DISC GOLF COURSE**

5800 College Blvd • Farmington, NM

**(505) 599-1197 • [fbtn.org/parks](http://fbtn.org/parks)**

Located near College Blvd and Sandalwood, offering a 27-basket disc golf course. The front 9 is short and scenic with good elevation changes. The middle 9 are longer and more difficult with denser trees in spots, and the back 9 even longer. Leashed pets permitted.

### **MAJESTIC ENCHANTMENT**

#### **DISC GOLF COURSE**

221 Hwy 511 • Blanco, NM

**(505) 801-9163**

**[majesticenchantment.com](http://majesticenchantment.com)**

18-basket challenging course alongside the San Juan River, built primarily through a wooded area. Hole lengths vary from 178 feet out to 549 feet. Perfect for a family outing, tournament, or field trip. Call to pre-schedule the course.

### **SAN JUAN COLLEGE**

#### **DISC GOLF COURSE**

4601 College Blvd • Farmington, NM

**(505) 566-3487 • [sanjuancollege.edu](http://sanjuancollege.edu)**

This course offers 27 baskets overlooking breathtaking vistas. Quick-shot front 9 geared towards beginners. Prodigy Loop is more difficult with different layouts and pin positions for added versatility. Course stretches over a mile and a half at a slight elevation change. Leashed pets permitted.





## AND MORE

**FARMINGTON RECREATION CENTER**  
1101 Fairgrounds Rd • Farmington, NM  
(505) 599-1184 • [fmtn.org/recreation](http://fmtn.org/recreation)

Five racquetball courts available for hourly reservations or drop-ins Monday through Saturday. Wallyball courts, full-size gym, Jazzercise, Zumba, pickleball, family events and summer kids' programs are available. Visit website for hours and details.

**TENNIS COMPLEX**  
2301 W. Piñon Hills Blvd  
Farmington, NM  
(505) 325-7936 • [fmtn.org/parks](http://fmtn.org/parks)

National award-winning tennis facility at the Farmington Sports Complex features 8 lighted courts. The pro shop is open Memorial Day to Labor Day. Visit website for a list of all tennis courts in town.

**INDOOR CLIMBING WALL AT SAN JUAN COLLEGE**  
4601 College Blvd • Farmington, NM  
(505) 566-3487  
[sanjuancollege.edu/climbing](http://sanjuancollege.edu/climbing)

The climbing wall has 6,000 sq. ft. of climbing and features 17 top rope stations, 12 lead climbing lines, 2 roofs, a running crack and a 600 sq. ft. bouldering cave. Climbers under the age of 14 must be accompanied by a parent or legal guardian. Handicap accessibility for mobility- and sight-impaired climbers. Reservations can be made for parties and special groups. Call for current hours and fees.

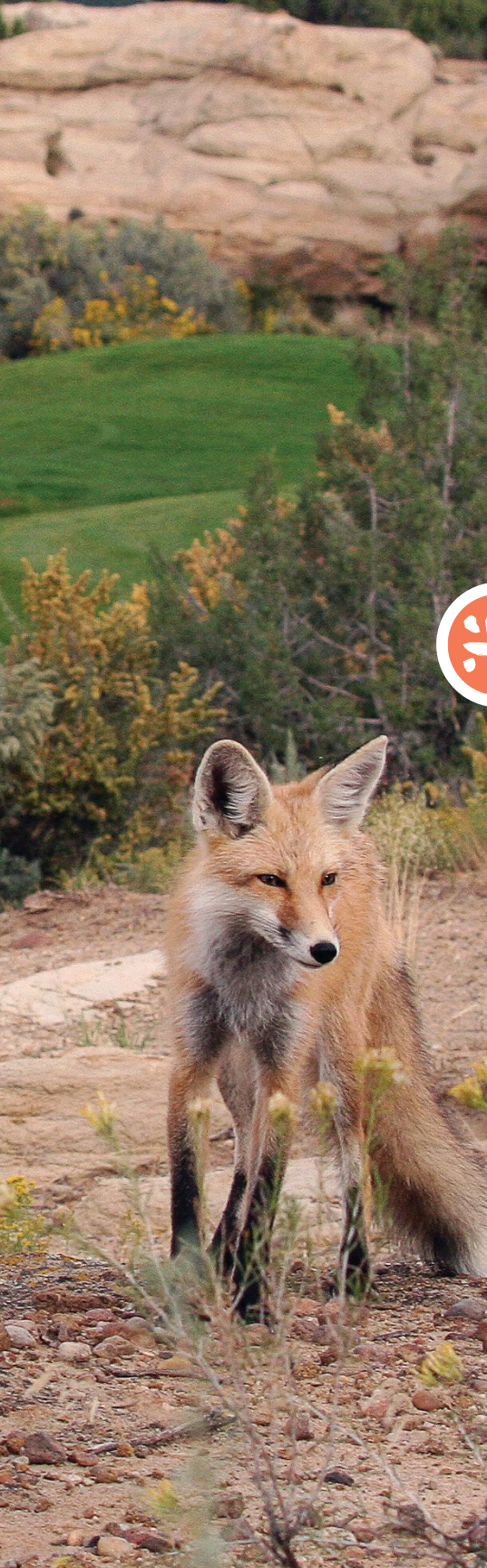
**SAN JUAN COUNTY FAIRGROUNDS/  
MCGEE PARK**  
#41 CR 5568 • Farmington, NM  
(505) 325-5415 • [sjcounty.net](http://sjcounty.net)

Home of the San Juan County Fair, rodeos, barrel racing competitions and more. The facility contains a 49,500 sq. ft. convention center, a multi-use building, two indoor and one outdoor arena, an RV park, and 400 stalls and pony pens. Leashed pets permitted. Visit website for scheduled events.

# DON'T BE OUTFOXED BY PIÑON HILLS GOLF COURSE

**T**here is nothing typical about Piñon Hills Municipal Golf Course. Like the hoodoos of the Bisti/De-Na-Zin Wilderness or iconic Shiprock Pinnacle, it has been shaped by the land it sits upon. From the piñon trees which dot the course to the shape of the fairways and greens, it is a product of the unforgettable, high-desert terrain.





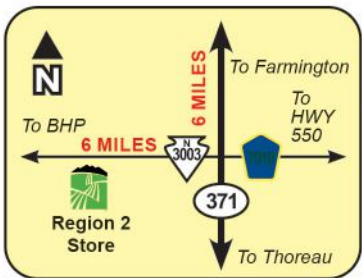
Stunningly beautiful but a challenge to master with one more surprise always up its sleeve, Piñon Hills was named 2021 Best Course in New Mexico to Play by *Golfweek* and has received national recognition by *Golf Digest*, *Golf Magazine* and *Golf Advisor*. Reviews will tell you it is a firm, fast, fun course to play with amazing views and affordable rates, but there is another reason why this course has been a standout amongst municipal courses since it opened in 1989. Simply put, Piñon Hills Golf Course can be at times as unforgiving and demanding as the terrain that helped design it, but it is always an enticing adventure masquerading as a fantastic game of golf.

Visit [pinonhillsgolf.com](https://www.pinonhillsgolf.com) to learn more and book your tee time.



**NAVAJO  
PRIDE**

**BUY  
LOCAL**



NAVAJO AGRICULTURAL PRODUCTS INDUSTRY

**Region 2 Store**

navajopride.com | 505-566-2641



# BUY NAVAJO PRIDE



*Organic Watermelon, Organic Squash  
Green Chile, Corn Meal, Pinto Beans, Potatoes,  
Blue Corn Pancake Mix, Flour, Sumac Berries  
Livestock Feed, Alfalfa, Forage*

Scan QR code for  
product listing & map





## Desert River Guides

**Guided Raft Trips on the  
Animas and San Juan Rivers  
in San Juan County.**

**109 E. Pinon  
Farmington, NM  
(505) 427-7734**

[www.desertriverguides.com](http://www.desertriverguides.com)

your journey new mexico true principals teach  
ington new mexico teachers students commi  
g to excellence in every pursuit curriculum  
ol piedra vista high school rocinante high sc  
le school hermosa middle school mesa vie  
as elementary apache elementary bluffview e  
horte elementary northeast elementary mes  
brnick elementary farmington preschool acc  
on school teacher of the year record num  
your journey new mexico true principals teach  
ington new mexico teachers students commi  
g to excellence in every pursuit curriculum  
ol p  
chool rocinante high sc  
le  
middle school mesa vie  
mentary bluffview e  
at elementary mes  
ton preschool acc  
year record num  
ue principals teach

# RISING

District Wide Level I HRS Certification  
Safe, Supportive and Collaborative Cultures  
at all 20 school locations  
Suzanne Holman - NM Teacher of the Year Finalist  
San Juan College High School -  
#1 High School in New Mexico

[district.fms.k12.nm.us](http://district.fms.k12.nm.us) | 505.324.9840 | 3401 E. 30th Street

## FARMINGTON

MUNICIPAL SCHOOLS

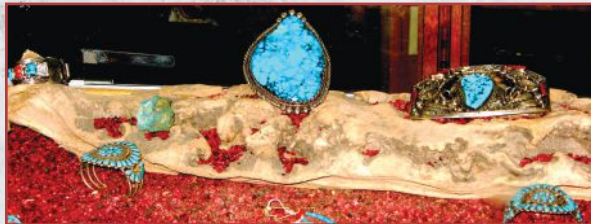
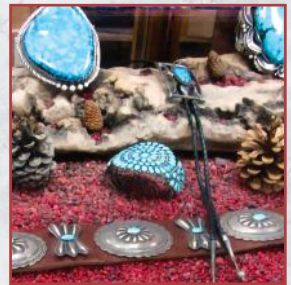
Rising to excellence in every pursuit

ESTABLISHED 1871

# HOGBACK TRADING CO.

*Tom Wheeler - 4th generation trader*

We specialize in cultural and traditional Indian arts and crafts and old pawn displayed over two levels in a 10,000 square foot Hogan-shaped building. For the first time, Tom's extensive personal collection of rugs, sculptures, paintings, old saddles, drums, baskets, and much more will be on display and for sale. A trip to Hogback Trading Co. is a rare travel treat.



**505.598.5154**

**3221 Hwy. 64  
Waterflow, NM 87421**

**15 Miles West of Farmington  
on Hwy. 64**

**HOURS:  
Monday - Friday 9 am - 5 pm  
Saturday 9 am - 4 pm**



**THE FUN STARTS HERE!**

**MOUNTAIN • ROAD • BMX  
E-BIKES • KIDS' BIKES**

- New, Used, Custom
- Service & Repair
- Local Trail Info & More

**BUY • SELL • TRADE • RENT**



**4301 E Main St. • Farmington  
505.326.0429 505cycles.com**

Experience  
the  
ancients...  
in the  
heart of  
Indian  
Country



**SALMON RUINS**  
Museum, Library, & Research Center



- 11th CENTURY PUEBLO
- PIONEER HOMESTEAD
- GUIDED TOURS
- GIFT SHOP, PICNIC AREA

OPEN: MON-FRI 8-5 • SAT-SUN 9-5  
NOV-APRIL SUNDAY HOURS: 12-5

**505-632-2013**

**www.SalmonRuins.com**

2 Miles West of Bloomfield, NM on Hwy 64

## Farmington's Gracious Downtown Inn and Executive Rentals.




Exceptional Lodging, Gardens, Courtyards, Fountains, and Staff.  
Complimentary Breakfast. Business Rates. Stunning Southwest style.

**CASA BLANCA**  
**INN SUITES**  
FARMINGTON, NEW MEXICO

(800) 550-6503 | CasaBlancaNM.com

# LET US GUIDE YOU



**C**haco Canyon. The Bisti/  
De-Na-Zin Wilderness. The  
Defensive Sites of the Dinetah.  
The rugged, stunningly beautiful  
terrain around Farmington is  
home to some amazing places,  
but it can also be intimidating  
at times. An experienced tour  
guide service can help ease your  
fears while ensuring you have  
the best possible experience  
by offering important historical  
and cultural information at each  
site. Whether you are looking to  
find the elusive King of Wings in  
the Bisti Wilderness, raft down  
the gorgeous Animas River or  
want a different kind of yoga  
experience, a knowledgeable  
guide will get you there safely  
and send you home after having  
a once-in-a-lifetime experience.





**BLACK BEAR UNLIMITED**  
109 E. Piñon St • Farmington, NM  
(505) 920-3447  
[blackbearunlimited.com](http://blackbearunlimited.com)

This company provides bring-your-own-4x4-vehicle or ride-along tour services for the world-class off-roading trails found in the Farmington area. Offering full- and half-day tours as well as automotive repair. Visit website for details.

**DESERT RIVER GUIDES**  
109 E. Piñon St • Farmington, NM  
(505) 427-7734  
[desertriverguides.com](http://desertriverguides.com)

Local rafting enthusiasts and experts lead safe, family-friendly, and affordable guided raft trips on the San Juan and Animas rivers in Farmington. A variety of packages offered. Visit website for rates, hours, and seasons of operation.

**DESTINATION MEDITATION**  
3005 Northridge Dr, Ste 1  
Farmington, NM  
[destinationmeditationnm@gmail.com](mailto:destinationmeditationnm@gmail.com)  
[destinationmeditationnm.com](http://destinationmeditationnm.com)

Relax, experience, and connect with the exquisite landscapes and formations that are unique to the area with a memorable guided meditation. Mindful Massage and additional services available. Family, individual, and group tours offered. Please email to learn more.

**JOURNEY INTO THE PAST TOURS**  
6131 Hwy 64, Bloomfield, NM  
(505) 632-2013 • [salmonruins.com](http://salmonruins.com)

Walk through history with expert guided tours of Chaco Canyon, Navajo Defensive Sites and rock art, Aztec arches and archaeology, and the Bisti Badlands. Customized tours can also be arranged.

**MOUNTAIN WATERS  
RAFTING & ADVENTURES**  
Durango, CO  
(970) 259-4191 • [durangorafting.com](http://durangorafting.com)

Colorado raft trips and guided tours of Mesa Verde, Hovenweep and Canyons of the Ancients. Jeep trail tours, bike and paddleboard rentals. Packages: Raft & Train, Raft & Zipline, Raft & Rock Climb.

**NAVAJO TOURS USA**  
Cuba, NM  
(855) 422-5476 • [navajotoursusa.com](http://navajotoursusa.com)

Diné-owned company offering interpretive tours with Diné guides! Safely explore the Bisti Badlands or learn about Ancestral Puebloans at Chaco Culture National Historical Park.



# Farmington Map

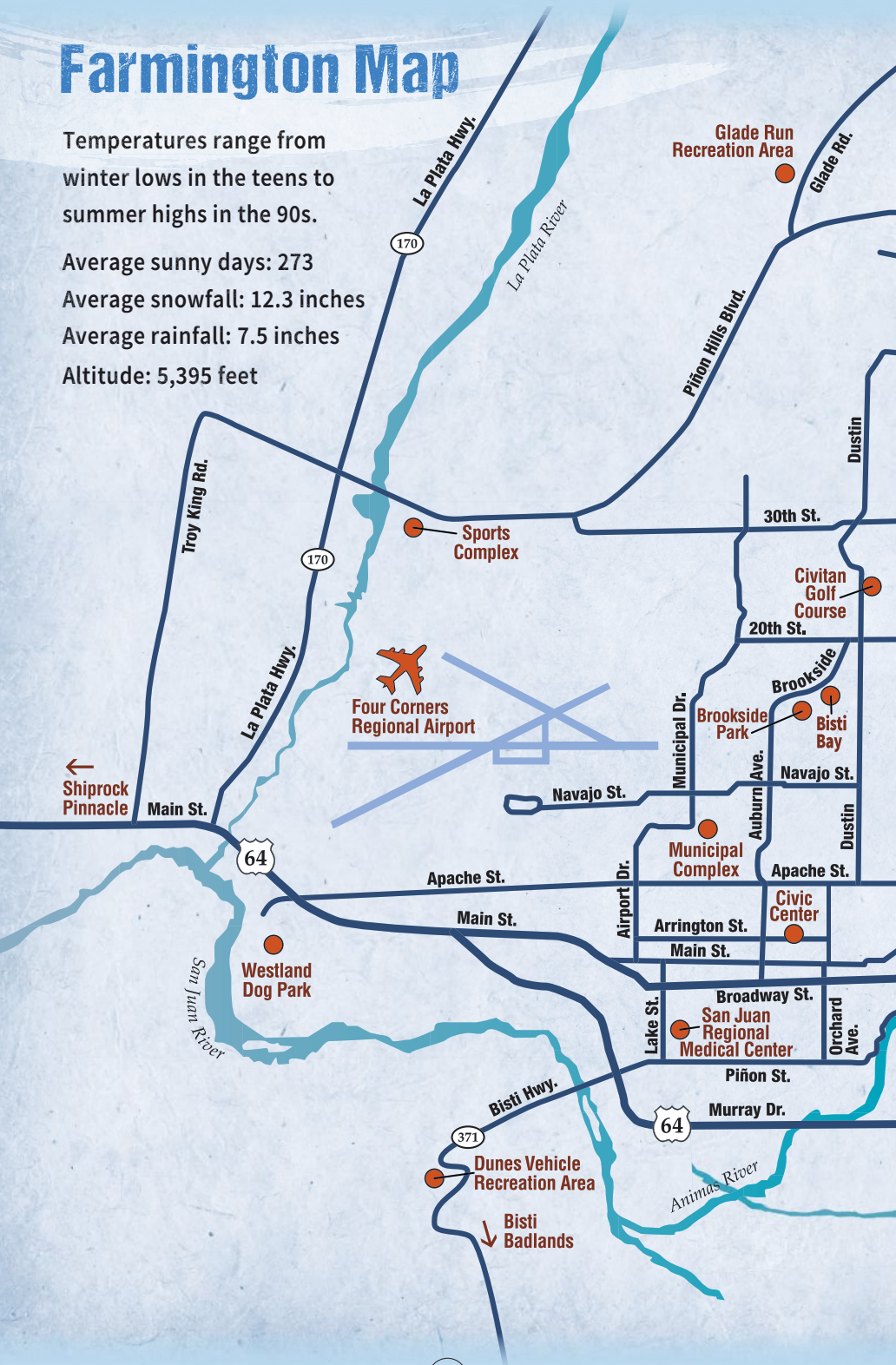
Temperatures range from winter lows in the teens to summer highs in the 90s.

Average sunny days: 273

Average snowfall: 12.3 inches

Average rainfall: 7.5 inches

Altitude: 5,395 feet







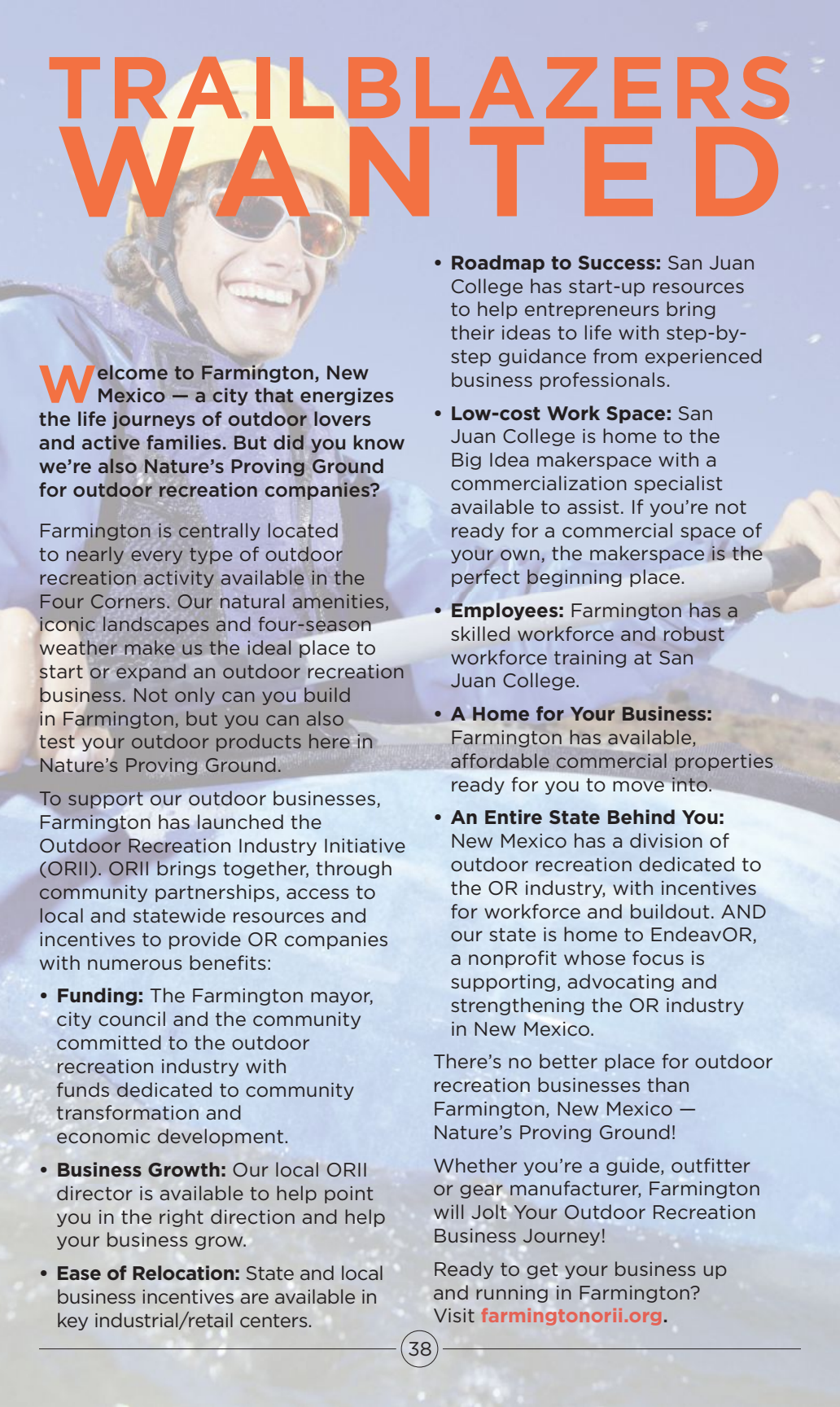
# Farmington Area Map

Weather & Road Conditions  
 (800) 432-4269



**Location map**

# TRAILBLAZERS WANTED



**W**elcome to Farmington, New Mexico — a city that energizes the life journeys of outdoor lovers and active families. But did you know we're also Nature's Proving Ground for outdoor recreation companies?

Farmington is centrally located to nearly every type of outdoor recreation activity available in the Four Corners. Our natural amenities, iconic landscapes and four-season weather make us the ideal place to start or expand an outdoor recreation business. Not only can you build in Farmington, but you can also test your outdoor products here in Nature's Proving Ground.

To support our outdoor businesses, Farmington has launched the Outdoor Recreation Industry Initiative (ORII). ORII brings together, through community partnerships, access to local and statewide resources and incentives to provide OR companies with numerous benefits:

- **Funding:** The Farmington mayor, city council and the community committed to the outdoor recreation industry with funds dedicated to community transformation and economic development.
- **Business Growth:** Our local ORII director is available to help point you in the right direction and help your business grow.
- **Ease of Relocation:** State and local business incentives are available in key industrial/retail centers.

- **Roadmap to Success:** San Juan College has start-up resources to help entrepreneurs bring their ideas to life with step-by-step guidance from experienced business professionals.
- **Low-cost Work Space:** San Juan College is home to the Big Idea makerspace with a commercialization specialist available to assist. If you're not ready for a commercial space of your own, the makerspace is the perfect beginning place.
- **Employees:** Farmington has a skilled workforce and robust workforce training at San Juan College.
- **A Home for Your Business:** Farmington has available, affordable commercial properties ready for you to move into.
- **An Entire State Behind You:** New Mexico has a division of outdoor recreation dedicated to the OR industry, with incentives for workforce and buildout. AND our state is home to Endeavor, a nonprofit whose focus is supporting, advocating and strengthening the OR industry in New Mexico.

There's no better place for outdoor recreation businesses than Farmington, New Mexico — Nature's Proving Ground!

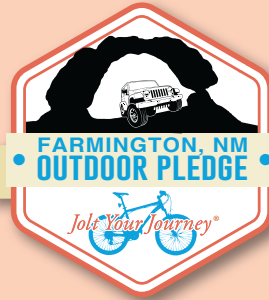
Whether you're a guide, outfitter or gear manufacturer, Farmington will Jolt Your Outdoor Recreation Business Journey!

Ready to get your business up and running in Farmington? Visit [farmingtonorii.org](http://farmingtonorii.org).

## PLEDGE YOUR LOVE FOR THE OUTDOORS

Farmington is committed to recreating responsibly! We invite visitors to join our residents in taking the Farmington Outdoor Pledge.

- 🚫 Be well prepared & practice safety
- 🚫 Be clean! Leave no trace
- 🚫 Be kind & respectful
- 🚫 Be an ambassador



Visit [farmingtonorii.org](http://farmingtonorii.org) to take the pledge.



# Your next adventure begins here.

SJC Outdoor Equipment Rental Center has:

- Standup paddleboards
- Canoes
- Camping equipment
- Backpacks
- Rafts & Kayaks
- Mountain Bikes
- Disk Golf Sets
- And More!

*Call us or visit our website for a full list of affordable equipment rentals.*



**SAN JUAN COLLEGE**  
Success Matters

[sanjuancollege.edu/oerc](http://sanjuancollege.edu/oerc)

505-566-3221



*The Art of*  
**ROD HUBBLE**

[www.rodhubble.com](http://www.rodhubble.com)



*36x36 "Heart of Home III" oil/linen*

---

**Wiford Gallery of Santa Fe**

403 Canyon Road • 505-982-2403

[www.wifordgallery.com](http://www.wifordgallery.com)

MAJOR ORIGINAL OILS ON LINEN

**Rod Hubble's New Mexico Studio**

Farmington, NM • 505-215-9013

ORIGINALS AND ART PRINTS

---

*For more information on showings, please email  
[RodneyHubble1272@comcast.net](mailto:RodneyHubble1272@comcast.net)*

*Photo by Aztec Media*



# Si Señor

Featuring the Finest Mexican Food in New Mexico

Dine-In | Patio | Drive-Thru



Takeout | Online Ordering | Catering

**505-324-9050**

[SiSeñorFarmington.com](http://SiSeñorFarmington.com)

4015 E. 30th St., Farmington

# GREAT Journeys begin here!

DISCOVER  
Four Corners  
Regional Airport

[www.fmtn.org/iflyfarmington](http://www.fmtn.org/iflyfarmington)

[facebook.com/iflyfarmington](https://facebook.com/iflyfarmington)

(505) 599-1394



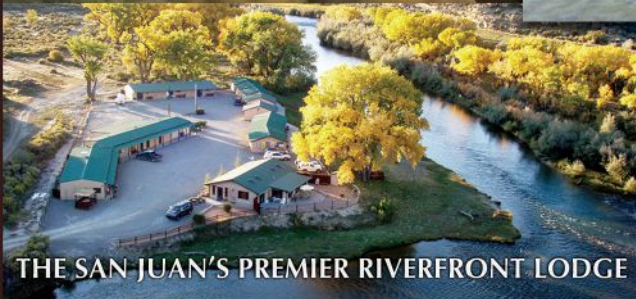
**FARMINGTON**  
*Join Your Journey™*

# SOARING EAGLE LODGE

SAN JUAN RIVER



NEW MEXICO



THE SAN JUAN'S PREMIER RIVERFRONT LODGE



Exclusive private river access



Established and  
experienced guides

Enjoy great fly fishing on the San Juan River in northwestern New Mexico.

- Refined relaxation in private cabins
- Award winning culinary chefs
- Full service fly shop with NM Fishing License

We welcome individuals, couples, and groups for personal and business getaways.

P.O. Box 6340 Navajo Dam, NEW MEXICO 87419 ▶ [www.soaringeaglelodge.net](http://www.soaringeaglelodge.net) ▶ 505.632.3721



# STUDY HALL FARMINGTON STYLE

**L**earning is bigger than four walls and a desk. Like everything else in the Four Corners, it's an adventure! It's scurrying up 700-year-old ladders and stepping through doorways that have stood for 900 years to learning about the people who once lived there. It's seeing how those who follow in their footsteps still call this place home, and how we can honor and help preserve their cultures today! It's riding trains, exploring our shared history and discovering that sometimes a plant isn't just a plant. Your Farmington Study Hall is as big as your imagination and full of so much adventure you might just find yourself begging to stay after school for detention!

## POINTS OF INTEREST AND NATIONAL PARKS

### **AZTEC RUINS NATIONAL MONUMENT**

725 Ruins Rd • Aztec, NM  
(505) 334-6174 • [nps.gov/azru](https://www.nps.gov/azru)

From AD 1050 to 1400, this monumental network of structures functioned as a center for trade as well as public and ceremonial events for the ancient Ancestral Puebloan people. Park features a visitor center, excavated Great House and the Great Kiva, the only reconstructed building of its kind. This UNESCO World Heritage Site is located 14 miles east of Farmington off Hwy 516 on Ruins Road/Road 2900. Wheelchair-accessible areas. Check website for hours and fees.

### **ALL VETERANS MEMORIAL PLAZA** S. Tucker Ave • Farmington, NM (505) 599-1197

Located along the banks of the Animas River, this beautiful memorial recognizes the contributions of all American veterans — past, present and future. Located at the end of Tucker Avenue, just off San Juan Blvd. The plaza features several memorial and information panels and sculptures.

### **CHACO CULTURE NATIONAL HISTORICAL PARK** 1808 CR 7950 • Nageezi, NM (505) 786-7014 ext. 221 [nps.gov/chcu](https://www.nps.gov/chcu)

A UNESCO World Heritage Site, this area was a major regional center of Ancestral Puebloan culture from AD 850 to 1200. Visitors explore ruins in the park via self-guided trails. An International Dark Sky Park, Chaco also offers night sky programs. To reserve a campsite, visit [recreation.gov](https://www.recreation.gov) or call (877) 444-6777. Located 75 miles south of Farmington. From Hwy 550, turn west on CR 7900. Travel 4 miles, turn onto CR 7950. Travel 16 miles, 8 of which are gravel. Wheelchair-accessible areas. Leashed pets permitted in designated areas. Call for road conditions, visitor center/park hours, and prices.

### **CUMBRES & TOLTEC SCENIC RAILROAD** 500 S. Terrace Ave • Chama, NM (575) 756-2151 [cumbrestoltec.com](https://www.cumbrestoltec.com)

The Cumbres & Toltec Scenic Railroad is a coal-fired, steam-operated, narrow-gauge train that travels through spectacular scenery in the Rocky Mountains between Chama, NM, and Antonito, CO. Runs daily late May through October. Located 112 miles east of Farmington on Highway 64. Check website for hours and rates.

### **DINÉTAH ROCK ART AND PUEBLITOS** San Juan County, NM (505) 564-7600 • [blm.gov/nm](https://www.blm.gov/nm)

Rich in cultural diversity, the Farmington area is home to multiple historical sites which speak to the history of the Ancestral Puebloan, Utes, early Spanish settlers and others here. Sites such as Simon, Largo and Crow canyons offer excellent examples of rock art, pueblitos and other structures. These sites are managed by the BLM. For more information and maps, visit [farmingtonnm.org](https://www.farmingtonnm.org).

### **FARMINGTON PUBLIC LIBRARY** 2101 Farmington Ave • Farmington, NM (505) 599-1270 • [fmtn.org/192/library](https://www.fmtn.org/192/library)

The Farmington Library is recognized for interesting architecture and artistic touches. The library offers a variety of programs, classes, live performances, and services. Check website for hours, services and programming.

### **FOUR CORNERS MONUMENT** Hwy 160 (928) 871-6647 / (928) 206-2540 [navajonationparks.org](https://www.navajonationparks.org)

The monument marks the only point in the United States where four states meet. An Indian marketplace with hand-worked crafts operates daily. Leashed pets permitted in designated areas. Wheelchair accessible. Located 60 miles northwest of Farmington on Hwy 160. Call for hours, prices and road conditions.

**HOVENWEEP NATIONAL MONUMENT**  
McElmo Rte • Cortez, CO  
(970) 562-4282 • [nps.gov/hove](http://nps.gov/hove)

Hovenweep protects five groupings of Ancestral Puebloan structures, including towers, dating from AD 1200 to 1300. Trails are open from sunrise to sunset. Camping is available. Leashed pets permitted. Visitor center is wheelchair accessible. Call for current hours and prices.

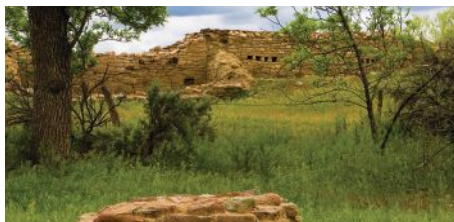
**MESA VERDE NATIONAL PARK**  
Mesa Verde, CO  
(970) 529-4465 • [nps.gov/meve](http://nps.gov/meve)

Designated a UNESCO World Heritage Site, the park features archeological sites that date back from AD 600 to 1300. Tickets are required for ranger-led tours and can be purchased at [recreation.gov](http://recreation.gov). Leashed pets permitted in limited areas. Mesa Verde is located on Hwy 160, 75 miles north of Farmington. Partially wheelchair accessible. Check website for hours and prices.



**RIVERSIDE NATURE CENTER**  
Browning Pkwy • Farmington, NM  
(505) 599-1422  
[farmingtonmuseum.org](http://farmingtonmuseum.org)

Facility features wildlife observation areas and exhibits associated with the plants and animals of the riverside, with emphasis on historic uses and ecosystems. Located in Animas Park, herb and xeriscape gardens are adjacent to the facility. Leashed pets permitted. Wheelchair accessible. Call for current hours and prices.



**SALMON RUINS & HERITAGE PARK**  
6131 Hwy 64 • Bloomfield, NM  
(505) 632-2013 • [salmonruins.com](http://salmonruins.com)

Salmon Pueblo, one of the largest outlying colonies of Chaco Canyon, was built in the Chacoan architectural style during the 11th century. Heritage Park is comprised of replica dwellings and habitations forming a "timeline of San Juan Basin history." A self-guided interpretive trail provides a leisurely walk. A picnic area is available. Leashed pets permitted in designated areas. Wheelchair-accessible areas. Located 10 miles east of Farmington on Hwy 64. Call for current hours or prices.

**VIETNAM VETERANS PARK**  
3801 N. Butler Ave • Farmington, NM  
(505) 599-1197

Located south of Carlton Street, a memorial plaza within the park includes inscriptions in black granite to honor soldiers missing or killed in action from the Four Corners area during the Vietnam War. The park contains a picnic shelter and playground. Picnic shelter may be reserved by calling (505) 599-1400.

~ VISIT OUR FREE ~  
OLD WEST INDIAN MUSEUM  
**BIG ROCK**  
TRADING POST

Large selection of Indian Jewelry  
General Merchandise  
Pawn • Propane

505-598-5184  
3761 US HIGHWAY 64  
WATERFLOW, NM 87421  
12 miles west of Farmington  
[www.bigrocktradingpost.com](http://www.bigrocktradingpost.com)

## MUSEUMS

### AZTEC MUSEUM & PIONEER VILLAGE

125 N. Main St • Aztec, NM

(505) 334-9829 • [aztecmuseum.org](http://aztecmuseum.org)

Visit this historical museum and explore its many rooms filled with artifacts. Stroll through the Pioneer Village, 12 original and replicated structures dating from the 1880s. Outside exhibits feature oil and gas equipment, farm implements and historical machinery. Call for current hours and prices.

### FARMINGTON MUSEUM

3041 E. Main St • Farmington, NM

(505) 599-1174 • [farmingtonmuseum.org](http://farmingtonmuseum.org)

Experience a wide variety of exhibits relating to the diverse history of the area's cultures, traveling exhibits and art shows. The museum store, Currents, features souvenirs, exhibit-related toys and educational materials.

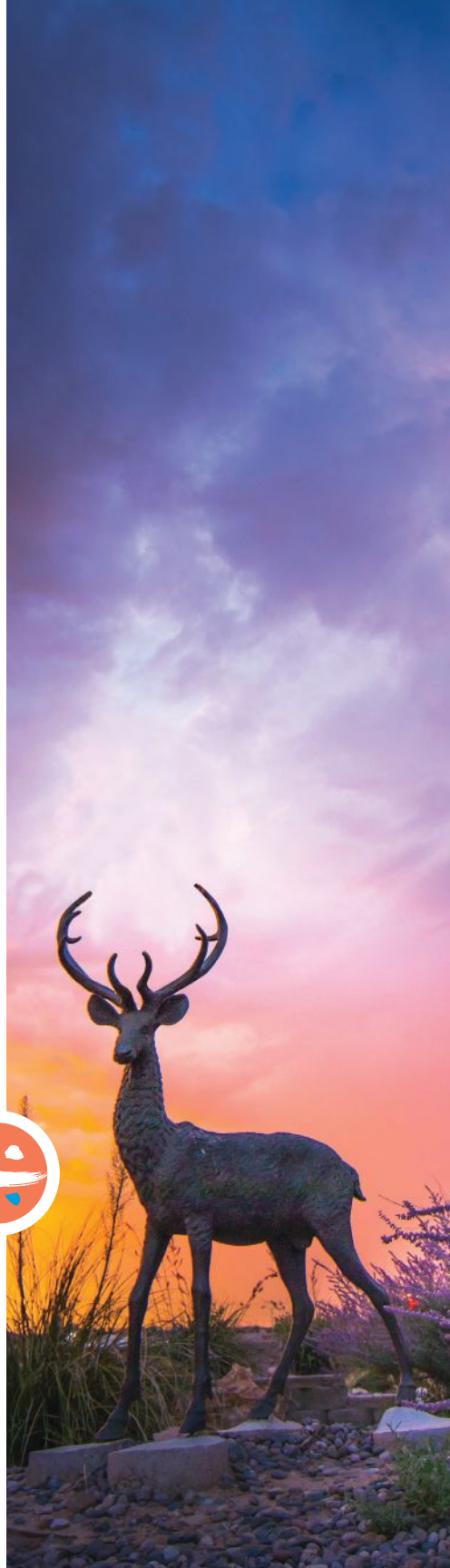
**Admission:** suggested donation \$3 adults, \$2 children. Wheelchair accessible. Call for hours.

### SAN JUAN COUNTY MUSEUM AT SALMON RUINS

6131 Hwy 64 • Bloomfield, NM

(505) 632-2013 • [salmonruins.com](http://salmonruins.com)

The museum features a permanent collection of Ancestral Puebloan pottery, jewelry, fetishes, replica tools and hunting equipment, plus interactive displays of archaeological techniques and Chacoan prehistory. Gift shop on site offering authentic Native crafts. Located 10 miles east of Farmington on Hwy 64. Wheelchair accessible. Phone for hours and fees.



**SHERMAN DUGAN  
MUSEUM OF GEOLOGY**  
5301 College Blvd • Farmington, NM  
(580) 574-1253 / (505) 566-3325  
[sanjuancollege.edu/  
school-of-energy/duganmuseum](http://sanjuancollege.edu/school-of-energy/duganmuseum)

This museum showcases an array of beautiful minerals, including a fluorescent display, a breathtaking amethyst geode and unique fossils from around the world, including a 35-million-year-old Megacerops skull and a dinosaur exhibit. Admission is free. Call for hours.

**TOADLENA TRADING POST  
WEAVING MUSEUM**  
Hwy 491 & N19 • Newcomb, NM  
(505) 789-3267  
[toadlenatradingpost.com](http://toadlenatradingpost.com)

A unique space that offers a glimpse into the past, maintaining a lifestyle that the Navajo and the traders have played out for over 100 years—nurturing a centuries-old weaving tradition to continue into the future. The work of 300 individual weavers is represented in the museum.

**BOLACK MUSEUMS  
AT B-SQUARE RANCH**  
3901 Bloomfield Hwy • Farmington, NM  
(505) 325-4275 • [bolackmuseums.com](http://bolackmuseums.com)

This ranch features two museums. The Museum of Fish & Wildlife, one of the largest private collections of mounted animals in the world, features over 2,500 specimens from five continents. The Electro-Mechanical Museum is an impressive private collection depicting developments in the electric power, telephone, radio, communications and oil and agriculture industries. Tours are free and offered by appointment on the hour.

**MUSEUM OF NAVAJO  
ART & CULTURE**  
301 W. Main St • Farmington, NM  
(505) 278-8225  
[farmingtonmuseum.org](http://farmingtonmuseum.org)

The museum features the rich artistry and centuries-old culture of the Navajo or “Diné” people. Discover beautiful weavings and art created by this vibrant culture. Visit website for hours.





# NATIVE CULTURES OF THE AREA



The traditions and cultures of surrounding Native American communities demonstrates the diversity that can be found in the Farmington area. For information on visiting the Navajo Nation, Jicarilla Apache, Southern Ute, Ute Mountain Ute and Hopi communities, contact the following entities.

Visit [farmingtonnm.org](http://farmingtonnm.org) for a complete listing of museums, community events and other opportunities to learn more.

## HOPI CULTURAL CENTER

Hwy 264, Milepost 379  
Second Mesa, AZ  
(928) 734-2401  
[hopiculturalcenter.com](http://hopiculturalcenter.com)

## JICARILLA APACHE NATION

Bldg. 25 Hawks Dr • Dulce, NM  
(575) 759-3242 • [jjanofficial.com](http://jjanofficial.com)

## NAVAJO PARKS & RECREATION

(928) 871-6647  
[navajonationparks.org](http://navajonationparks.org)

Tribal Park guidelines, camping and hiking.

## NAVAJO TOURISM

Karigan Professional Building  
Hwy 264 & 100 Taylor Rd, Ste 209  
St. Michaels, AZ  
(928) 810-8501 • [discovernavajo.com](http://discovernavajo.com)

## SOUTHERN UTE MUSEUM & CULTURAL CENTER

503 Ouray Dr • Ignacio, CO  
(970) 563-9583 • [southernute-nsn.gov](http://southernute-nsn.gov)

## UTE MOUNTAIN UTE

Towaoc, CO  
(970) 565-3751  
[utemountainutetribe.com](http://utemountainutetribe.com)





**WE WANT TO BE  
YOUR PERSONAL  
JEWELER FOR LIFE.**

- ★ In-House Jewelry Repairs
- ★ Custom Designed Creations
- ★ Certified Diamonds & Gemstones
- ★ Watches, Gifts, & Engraving
- ★ Designer Jewelry

**OUR GOAL IS TO MAKE JEWELRY  
SHOPPING ENJOYABLE.**

505.599.9400  
jajewels.com



**HOURS**  
**MONDAY – FRIDAY**  
9:30 am – 6:00 pm  
**SATURDAY**  
10:00 am – 5:00 pm  
**CLOSED SUNDAY**

# CLANCY'S IRISH CANTINA



- Steak
- Sushi Bar
- Gourmet Hamburgers
- Family Dining
- Seasonal Patio
- Local Live Music
- Free Internet
- Catering

Green Chile Cheeseburger  
"Best Burger in NM"  
– *The Food Network*

505.325.8176 • Clancys.net



2701 E. 20th Street Farmington



**Outstanding Northern New Mexico Cuisine**

**PORTERS**  
RESTAURANT & SMOKEHOUSE

**BBQ STEAKS BURGERS SEAFOOD MEXICAN**

Breakfast  
July 2021!

Covered  
Patio Dining

Private  
Party Space

**Beer & Wine**



**2210 E 20th ST - FARMINGTON - 505.327.5979 - porters-farmington.com**

# ADVENTURES FOR THE YOUNG & YOUNG AT HEART



**F**armington is ideal for adventure seekers of all ages, because the best adventures are always the ones the whole family—including the four-legged members — can do together! Whether it is time spent enjoying one of more than 50 city parks, soaring on a trampoline, or just finding a place to cool off on a hot summer day, these adventures are the perfect chance for the young and young at heart to spend time together.



### **ANIMAS RIVER TRAILS**

**1651 San Juan Blvd • Farmington, NM**  
**(505) 599-1197**  
**[fmtn.org/walkingtrails](http://fmtn.org/walkingtrails)**

Approximately 8 miles of nature trails weave through Animas, Berg and Boyd parks. Ideal for jogging, walking, bicycling, bird and wildlife watching and horseback riding. Leashed pets permitted. Trails can be accessed off Browning Parkway, Animas Park and at Scott Avenue and San Juan Blvd in Berg Park.

### **FARMINGTON AQUATIC CENTER**

**1151 N. Sullivan Ave • Farmington, NM**  
**(505) 599-1167 • [fmtn.org/pools](http://fmtn.org/pools)**

This center features an indoor Olympic-size pool with one three-meter and two one-meter diving boards, children's playground pool and 150-foot slide. Open year-round; visit website for hours and prices.

### **BISTI BAY AT BROOKSIDE PARK**

**1901 N. Dustin Ave • Farmington, NM**  
**(505) 599-1188 • [fmtn.org/bistibay](http://fmtn.org/bistibay)**

This unique waterpark includes a 183-foot closed flume slide, 142-foot open flume slide, lots of play features, lazy river and lap lanes. Look for dino fossils and footprints in the pavers. Pavilions and a private room available for party rentals. Open seasonally. See website for hours and prices.

### **BERG PARK FOUNTAIN**

**Scott Ave & San Juan Blvd**  
**Farmington, NM**  
**(505) 599-1167 • [fmtn.org/pools](http://fmtn.org/pools)**

Kids of all ages will enjoy this outdoor interactive spray pad. Located on the corner of Scott Ave and San Juan Blvd. Smaller spray pad at Orchard Park. Open seasonally mid-April thru mid-October, sunrise to sunset.





**THE BEACH AT LAKE FARMINGTON**  
8120 E. Main St, Farmington, NM  
(505) 599-1167  
[fmtn.org/lakefarmington](http://fmtn.org/lakefarmington)

Enjoy a day of fun in the sun, sandy shores and cool water at the beach! Bring your own inflatables or play on the water slides and trampoline. Lifeguards on duty in this designated area. See website for hours and prices, as well as lake access fees.

**E3 CHILDREN'S MUSEUM & SCIENCE CENTER**  
302 N. Orchard Ave • Farmington, NM  
(505) 599-1425  
[farmingtonmuseum.org](http://farmingtonmuseum.org)

The museum offers hands-on, science-related interactive exhibits and role-playing areas in the main gallery, with special programs scheduled throughout the year. The Tot's Turf gallery is a developmentally appropriate environment for children 5 and younger. See website for hours.

**FARMINGTON RC PARK**  
1615 1/2 Ojo Ct • Farmington, NM  
(505) 599-1197

This park features a covered spectator area, RC airstrip and RC vehicle track. For RC planes and helicopters, there's a paved 650x60-foot runway, large pit area, and hover pad. Battlegrounds RC Park features a multi-lane course and driving stand, perfect for vehicles. The park is open for use during the day, seven days a week.

**FLY HIGH ADVENTURE PARK**  
1650 E. 20th St • Farmington, NM  
(505) 787-2677 • [flyhighfun.com](http://flyhighfun.com)

Fly High is a premier indoor trampoline park with launch pads, obstacle course, foam pits, open trampoline area and more. Great for beginner and seasoned jumpers of all ages. Party packages available. Visit website for hours, prices and specials.

**SYCAMORE PARK PUMP TRACK**  
1051 Sycamore St • Farmington, NM  
(505) 566-2480

This new pump track is an entry-level course designed to introduce young riders to the exciting sport of pump riding! The park also includes a walking trail and a small gathering area for spectators.

**DOG PARKS**  
Farmington, NM  
(505) 599-1197

Farmington boasts two dedicated dog parks for you and your furry friend to enjoy. Saddleback Park at 6300 Marseille Blvd and Westland Park at 2999 La Puente Pl. Parks are open sunrise to sunset.



# FOUTZ TRADING CO.

NAVAJO RUGS    PENDLETON ITEMS  
TURQUOISE JEWELRY

KIRTLAND  
598-6570

SHIPROCK  
368-5790

HWY 64 WEST OF FARMINGTON



WWW.FOUTZTRADE.COM

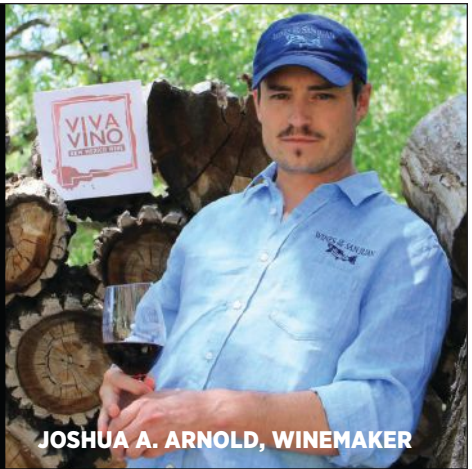


As a 100-percent Diné owned company, Navajo Tours USA offers interpretive tour guiding with Diné guides. Walk amongst, and learn about, the thousands of naturally sculpted toadstools, mushrooms, tent rocks, and spires at the Bisti/De-Na-Zin Wilderness. Learn how the Ancestral Puebloans practiced archaeoastronomy by aligning architectural works to solar and lunar cycles at Chaco Culture National Historical Park. **BOOK TODAY!**



NAVAJO TOURS USA

navajotoursusa.com  
855.422.5476



JOSHUA A. ARNOLD, WINEMAKER



## WINES OF THE SAN JUAN



RV Hook-ups Available  
winesofthesanjuan.com

Located just 11 miles below Navajo Lake  
in the San Juan River Valley.

# SWAG IN A BAG

**O**n vacation, people most often find themselves looking for two things: adventure and souvenirs. Luckily, Farmington has you covered with both. Serving as the retail center of the Four Corners, we have a wide selection of specialty shops, art galleries and some of the oldest trading posts in New Mexico to help you find that perfect souvenir and everyday essentials! Listed are FCVB members.

Visit [farmingtonnm.org](http://farmingtonnm.org)  
for more information.



#### **AMY'S BOOKCASE**

2530 San Juan Blvd • Farmington, NM

**(505) 327-4647**

[amysbookcase1.com](http://amysbookcase1.com)

#### **ANIMAS VALLEY MALL**

4601 E. Main St • Farmington, NM

**(505) 326-2654**

[animasvalleymall.com](http://animasvalleymall.com)

#### **ARTIFACTS 302**

302 E. Main St • Farmington, NM

**(505) 327-2907 • [artifacts302.com](http://artifacts302.com)**

#### **BIG ROCK TRADING POST**

3761 Hwy 64 • Fruitland, NM

**(505) 598-5184**

[bigrocktradingpost.com](http://bigrocktradingpost.com)

#### **CURRENTS MUSEUM GIFT SHOP**

3041 E. Main St • Farmington, NM

**(505) 566-2294**

#### **THE DUSTY ATTIC**

111 W. Main St • Farmington, NM

**(505) 327-7696**

#### **FIFTH GENERATION TRADING CO.**

232 W. Broadway Ave • Farmington, NM

**(505) 326-3211 • [tannertrading.com](http://tannertrading.com)**

#### **HEART GALLERY**

307 W. Main St • Farmington, NM

**(505) 801-5889 • [FB HEart Gallery](#)**

#### **HENDERSON FINE ARTS CENTER ART GALLERY**

4601 College Blvd • Farmington, NM

**(505) 566-3464**

[sanjuancollege.edu](http://sanjuancollege.edu)

#### **HOGBACK TRADING COMPANY**

3221 Hwy 64 • Waterflow, NM

**(505) 598-5154**

#### **J.A. JEWELERS**

4005 E. Main St, Ste D • Farmington, NM

**(505) 599-9400 • [jajewels.com](http://jajewels.com)**

#### **MAJESTIC ENCHANTMENT**

#### **ART GALLERY**

211 Hwy 511 • Blanco, NM

**(505) 801-9163**

[majesticenchantment.com](http://majesticenchantment.com)

#### **NAVAJO PRIDE/NAVAJO AGRICULTURAL PRODUCTS INDUSTRY (NAPI)**

10086 NM Hwy 371

Region 2 Store • Farmington, NM

**(505) 566-2600 • [navajopride.com](http://navajopride.com)**

#### **NAVAJO TRADING COMPANY**

126 E. Main St • Farmington, NM

**(505) 325-1685**

#### **ROD HUBBLE'S NEW MEXICO STUDIO & GALLERY**

**(505) 215-9013 • [rodhubble.com](http://rodhubble.com)**

[rodneymhubble1272@comcast.net](mailto:rodneymhubble1272@comcast.net)

#### **THREE RIVERS ART CENTER (TRAC) & GALLERY**

123 W. Main St • Farmington, NM

**(505) 716-7660**

#### **THUNDER VISIONS ART STUDIO AND GIFT SHOP**

**(505) 686-5564 • [thundervisions.com](http://thundervisions.com)**

*Call for appointment*

#### **TOADLENA TRADING POST**

Hwy 491 & N19

Newcomb, NM

**(505) 789-3267**

[toadlenatradingpost.com](http://toadlenatradingpost.com)

#### **WINES OF THE SAN JUAN VINEYARD WINERY & TASTING ROOM**

233 Hwy 511 • Blanco, NM

**(505) 632-0879**

[winesofthesanjuan.com](http://winesofthesanjuan.com)

#### **505 CYCLES**

4301 E. Main St • Farmington, NM

**(505) 326-0429 • [505cycles.com](http://505cycles.com)**

# HISTORY MADE NEW

The heart of Farmington has always been in our historic downtown, and that heart has never been stronger or more beautiful after receiving a well-deserved “heart-lift”! Aimed at increasing walkability while maintaining the historic architecture, the renovation included the widening of sidewalks so strolling through—and supporting—the many

restaurants, galleries and specialty shops is easier and safer to do than ever! While there, be sure to keep an eye out for wonderful murals painted by local artists as well as the new pocket-parks. These small parks are an integral part of the new landscaping and are perfect for picnics, but they will also be home to intimate concerts by local musicians!



Fall 2021 brings free WiFi as well as a complete remodel and restore of the beautiful and historic Totah Theater! Long an integral part of the downtown community, the theater is being equipped with state-of-the-art A/V equipment and will soon join the nearby, recently remodeled Civic Center in hosting musical, film and community events! The pair will be an important part of continuing Farmington's long-standing tradition of bringing people together to celebrate, educate and entertain!

It is with great pride and excitement that we invite you to spend a little

time getting to know the new and improved Heart of Farmington! Stop in to have a delicious meal at one of the many locally owned restaurants, shop for an original work of art by one of our amazing artists, or buy yourself or someone special a beautiful handmade piece of Navajo jewelry! Or, if you'd rather, just relax in one of the pocket-parks and soak up some of our beautiful New Mexico sunshine! However you spend your time here, we're sure it's a place you'll find yourself wanting to come back to again and again!



art . photography . jewelry . classes/parties . events



karen.ellsbury



patrick.hazen



**Heart Gallery**

307 West Main  
Farmington, NM 87401  
505-801-5889  
karenellsbury.com



Three Rivers Art Center is a non-profit, collective gallery that shows work from local artists and craftsmen.

Hours are Wednesday through Saturday, 10 am to 6 pm.



123 West Main Street  
Farmington, NM 87401  
505-716-7660



**ARTIFACTS  
302**

• GALLERY • STUDIO BAKE SHOPPE •  
• CHILE STORE •

Gallery and studios are located in historic downtown Farmington. Over 40 local and area artists are featured – working in a variety of mediums.

**NOW OPEN IN ARTIFACTS:**



Fresh Muffins,  
Cookies & More  
Italian Sodas • Drip Coffee  
Cold Brew and Tea



Chile Products from  
New Mexico  
and the Four Corners

**505-327-2907**

302 E. Main Street  
Farmington, New Mexico 87401

# A RUN OF GOOD LUCK

**B**y coming to Farmington, you have already hit the jackpot for exciting outdoor adventure; but, with multiple casinos to choose from, you can test your luck in other ways, too! From the latest in machines and live horse racing to dinner and a show, you'll think you have struck it rich in Farmington!

**FLOWING WATER CASINO**  
2710 Hwy 64 • Shiprock, NM  
(505) 368-2300  
[flowingwatercasino.com](http://flowingwatercasino.com)

Offering more winning and more excitement, plus fast, friendly dining. Located 27 miles west of Farmington. Managed by the Navajo Nation Gaming Enterprise. Wheelchair accessible. Visit website for hours.

**NORTHERN EDGE CASINO**  
2752 Rd 36 • Fruitland, NM  
(505) 960-7000 / (877) 241-7777  
[northernedgecasino.com](http://northernedgecasino.com)

Located 5 minutes southwest of Farmington off US Hwy 371. This casino is managed by the Navajo Nation Gaming Enterprise and features slots, table games, food court and Cedar Bow Restaurant & Bar. Live entertainment weekly. Wheelchair accessible. Visit website for hours.

**THE SKY UTE CASINO RESORT**  
14324 Hwy 172 • Ignacio, CO  
(800) 876-7017 • [skyutecasino.com](http://skyutecasino.com)

This resort and casino features live blackjack, poker, roulette, bingo and high-tech slots. Leashed pets permitted. Located 73 miles northeast of Farmington on Hwy 172 North in Ignacio, CO next door to the Southern Ute Cultural Center and Museum. Wheelchair accessible.

**SUNRAY PARK & CASINO**  
39 Rd 5568 • Farmington, NM  
(505) 566-1200 • [sunraygaming.com](http://sunraygaming.com)

Features a wide variety of state-of-the-art slot and video machines as well as seasonal live horse racing and coast-to-coast simulcast. Enjoy a wide range of dining options, while watching your favorite sporting events on big screens in the Sportz Arena Restaurant. Visit website for hours. Free shuttle service available to most hotels. Wheelchair accessible.

**UTE MOUNTAIN CASINO & HOTEL**  
3 Weeminuche Dr • Towaoc, CO  
(800) 258-8007  
[utemountaincasino.com](http://utemountaincasino.com)

Colorado's first Tribal gaming facility, offering live table gaming, the latest slots and bingo seven days a week. Kuchu's Restaurant is on site. Wheelchair accessible.



# *You're free to be you.*

- Staying one night or thirty, we have a special rate to meet every need.
- 24/7 Coffee to keep your adventure going.
- Fully-equipped kitchens plus free breakfast.
- Get your workout in the Spin2Cycle while you wash your laundry.
- Spacious meeting room with and 80-inch touchscreen display.
- Pet-friendly.



*Relax while  
working or just  
work on relaxing!*



Home2Suites  
777 S Browning Parkway  
Farmington, NM 87401  
505-325-1500  
[farmingtonbloomfield.home2suites.com](http://farmingtonbloomfield.home2suites.com)



# REFUEL & REFRESH



**A** great vacation always includes some amazing food and drink. Farmington's wide array of restaurants offer everything from amazing comfort food to authentic New Mexican cuisine, which features Native American, Mexican and Spanish flavors combined with the all-important chile pepper, so you will never have a problem finding something delicious for dinner! In fact, the toughest choice you might face is whether you want to top it off with a unique craft beer from one of our local breweries or a glass of wine from the award-winning Wines of the San Juan. Well, that and where you want to go for dessert, but when is having too many tasty treats to choose from a problem? Businesses listed are FCVB members.

#### *\*Catering available*

#### **ASPEN LEAF FROZEN YOGURT**

5150 E. Main St, Ste 105

Farmington, NM

**(505) 564-4385**

#### **CEDAR BOW AT NORTHERN EDGE CASINO**

(Food court also on site)

2752 Rd 36 • Fruitland, NM

**(505) 960-7065**

**[northernedgecasino.com](http://northernedgecasino.com)**

#### **CHICK-FIL-A\***

4910 E. Main St • Farmington, NM

**(505) 325-7000 • [chick-fil-a.com](http://chick-fil-a.com)**

#### **CLANCY'S PUB, AN IRISH CANTINA\***

2701 E. 20th St • Farmington, NM

**(505) 325-8176 • [clancys.net](http://clancys.net)**

#### **COME TO THE FEAST CULINARY SERVICES\***

Catering only • Farmington, NM

**(505) 327-1996 / (505) 787-9882**

**[cometothe Feast.com](http://cometothe Feast.com)**

#### **DICKEY'S BARBECUE PIT\***

3701 Messina Dr, Bldg 100

Farmington, NM

**(505) 501-7094 • [dickkeys.com](http://dickkeys.com)**

Visit [farmingtonnm.org](http://farmingtonnm.org)  
for more information.



**FIESTA MEXICANA\***  
 3100 E. Main St • Farmington, NM  
 (505) 326-0088 • [fiestamexrest.com](http://fiestamexrest.com)

**FUDDRUCKERS\***  
 Animas Valley Mall  
 4601 E. Main St • Farmington, NM  
 (505) 326-2089 • [fuddruckers.com](http://fuddruckers.com)

**LAUTER HAUS BREWING CO.**  
 1806 E. 20th St • Farmington, NM  
 (505) 326-2337 • [lauterbrew.com](http://lauterbrew.com)

**LOS HERMANITOS DEL OESTE\***  
 2400 W. Main St • Farmington, NM  
 (505) 327-1919 • [loshermanitos.com](http://loshermanitos.com)

**OSO GRANDE COFFEE**  
 2214 San Juan Blvd • Farmington, NM  
 (505) 436-2925

**PADDOCK CATERING\***  
 Catering only  
 315 N. Auburn Ave • Farmington, NM  
 (505) 330-3211  
[paddockbridalandcatering.com](http://paddockbridalandcatering.com)

**PORTERS\***  
 2210 E. 20th St • Farmington, NM  
 (505) 327-5979  
[porters-farmington.com](http://porters-farmington.com)

**THE CHILE POD\***  
 121 W. Main St • Farmington, NM  
 (505) 258-4585 • [thechilepod.com](http://thechilepod.com)

**THE SPARE RIB BBQ\***  
 1700 E. Main St • Farmington, NM  
 (505) 325-4800 • [thespareribbbq.com](http://thespareribbbq.com)

**THE SPORTZ ARENA AT SUNRAY  
 PARK & CASINO**  
 #39 Rd 5568 • Farmington, NM  
 (505) 566-1200  
[sunraygaming.com/restaurant](http://sunraygaming.com/restaurant)

**THE STUDIO BAKE SHOPPE**  
 302 E. Main St • Farmington, NM  
 (505) 327-2907 • [artifacts302.com](http://artifacts302.com)

**THREE RIVERS BREWERY\***  
 101 E. Main St • Farmington, NM  
 (505) 324-2187  
[threeriversbrewery.com](http://threeriversbrewery.com)

**THREE RIVERS PIZZERIA\***  
 107 E. Main St • Farmington, NM  
 (505) 325-0308  
[threeriversbrewery.com](http://threeriversbrewery.com)

**TRAEGERS**  
 5170 College Blvd • Farmington, NM  
 (505) 278-8568 • [traegersbar.com](http://traegersbar.com)

**WINES OF THE SAN JUAN  
 VINEYARD WINERY  
 & TASTING ROOM**  
 233 Hwy 511 • Blanco, NM  
 (505) 632-0879  
[winesofthesanjuan.com](http://winesofthesanjuan.com)



# KICK BACK AND STAY A WHILE

**H**aving one fun-filled adventure after another can be exhausting, but finding a place to lay your head is never a problem in Farmington. From favorite hotel and motel brands to unique bed and breakfasts and RV parks, we have accommodations to meet every need and price point. So, kick back, relax and stay a while! Featured businesses are FCVB members. Visit [farmingtonnm.org](http://farmingtonnm.org) for a complete listing.

## **B&B'S**

### **CASA BLANCA INN & SUITES LLC**

505 E. La Plata St  
Farmington, NM

**(505) 327-6503**  
[casablanca.com](http://casablanca.com)

#### **9 Rooms and 1 2-BR Cottage**

Quaint Spanish Colonial hacienda surrounded by gardens, courtyards and fountains in a quiet residential neighborhood overlooking downtown Farmington. **Amenities:** breakfast, weekly rates, handicap accessible, kitchenettes, pets.

### **KOKOPELLI'S CAVE**

87 Rd 1980  
Farmington, NM

**(505) 860-3812**  
**(505) 402-5900**

[kokoscave.us](http://kokoscave.us)

#### **1 Cave Suite**

Located 70 feet underground and 280 feet above the La Plata River floor, this remote 1,650 sq. ft. cave features a bedroom, living area, balcony, replica Native American kiva, dining area, full kitchen, and bathroom with waterfall shower and hot tub. **Amenities:** continental breakfast, multiple-day rates, kitchenette. Pets and smoking not permitted.

### **SOARING EAGLE LODGE**

48 Rd 4370  
Blanco, NM

**(505) 632-3721**  
**(800) 866-2719**

[soaringeaglelodge.net](http://soaringeaglelodge.net)

#### **11 Cabins**

Nestled on the banks of the San Juan River, this is Navajo Dam's only riverfront lodge and offers lodging, meals, guide service, fly fishing instruction, float trips, fly shop, private river access, and much more. **Amenities:** breakfast/dinner, weekly rates.

## HOTELS & MOTELS

### BEST WESTERN PLUS THE FOUR CORNERS INN

4751 Cortez Way  
Farmington, NM  
(505) 564-8100  
[bestwestern.com](http://bestwestern.com)

#### 66 Rooms

Great location in Farmington, situated near an excellent assortment of restaurants, shopping and recreation areas.

**Amenities:** breakfast, pool, handicap accessible, pets, fitness room.

### COMFORT SUITES

1951 Cortland Dr  
Farmington, NM  
(505) 325-9414  
[comfortsuites.com](http://comfortsuites.com)

#### 73 Suites

Whether visiting for business or pleasure, Comfort Suites has everything you need at competitive prices, along with a friendly staff! **Amenities:** breakfast, pool, handicap accessible.

### FAIRFIELD INN & SUITES BY MARRIOTT

2850 E. Main St  
Farmington, NM  
(505) 324-0777  
[marriott.com/fmnfi](http://marriott.com/fmnfi)

#### 80 Rooms

Travel with confidence and enjoy thoughtfully designed guest rooms and suites plus outstanding service for a comfortable stay at an exceptional value. **Amenities:** breakfast, pool, handicap accessible, service animals only, fitness center.

### HOLIDAY INN EXPRESS & SUITES

2110 Bloomfield Blvd  
Farmington, NM  
(505) 325-2545  
[hiexpress.com](http://hiexpress.com)

#### 101 Rooms

The 100% smoke-free Holiday Inn Express® Farmington hotel is in the center of the rugged beauty of the Four Corners area. Stay connected with high-speed fiber WiFi.

**Amenities:** breakfast, pool, fitness center, grill, handicap accessible, pets.

### HOME2 SUITES BY HILTON

777 S. Browning Pkwy  
Farmington, NM  
(505) 325-1500  
[farmingtonbloomfield.home2suites.com](http://farmingtonbloomfield.home2suites.com)

#### 96 Suites

Located at the center of town, Home2 Suites offers guests easy access to shopping, recreation areas, restaurants and major roadways.

**Amenities:** breakfast, pool, weekly rates, handicap accessible, kitchenettes, pets, barbecue grill, fire pit, heated smoking area.

**QUALITY INN**  
555 Scott Ave  
Farmington, NM  
(505) 716-4138

[choicehotels.com](http://choicehotels.com)

#### 59 Rooms/19 Suites

Offering a warm, inviting atmosphere, you'll feel welcome the moment you walk in. **Amenities:** breakfast, handicap accessible, pets.

### TOWNEPLACE SUITES BY MARRIOTT

4200 Sierra Vista Dr  
Farmington, NM  
(505) 327-2442

[marriott.com/fmnts](http://marriott.com/fmnts)

#### 116 Suites

Centrally located, this extended-stay property meets the needs of business and leisure travelers and is within walking distance of restaurants and shopping. **Amenities:** breakfast, pool, weekly rates, handicap accessible, kitchenettes, pets, meeting space.

### TRAVELODGE

652 E. Main St  
Farmington, NM  
(505) 675-0852  
[wyndhamhotels.com/travelodge](http://wyndhamhotels.com/travelodge)

#### 34 Rooms

Free WiFi, daily breakfast, and everything you need for a good night's sleep in Farmington, NM.

**Amenities:** weekly rates, pets.

## ADDITIONAL LODGING

**BAYMONT INN & SUITES**  
**BLUFFVIEW MOTEL**  
**COURTYARD MARRIOTT**  
**BRENTWOOD INN**  
**ECONOMY INN**  
**ENCORE MOTEL**  
**FARMINGTON INN**  
**HAMPTON INN & SUITES**  
**JOURNEY INN**  
**LA QUINTA**  
**MOTEL 6**  
**NATIONAL 9 INN**  
**REGION INN**  
**RODEWAY INN**  
**SILVER RIVER**  
**ADOBE B&B**  
**TRAVEL INN**  
**TRAVELODGE**

## **RV SERVICE, PARKS & CAMPGROUNDS**

Visit [farmingtonnm.org](http://farmingtonnm.org), [newmexicostateparks.com](http://newmexicostateparks.com) or [reserveamerica.com](http://reserveamerica.com) for additional RV and camping options in the area. Featured listings are members of the FCVB.

### **A TO Z TIRE LADY INC.** 2100 San Juan Blvd Farmington, NM (505) 327-4406

Offering new tires and repairs on RV, trailers, ATV/UTV, OTR and most everything. Oil changes, alignments and on-site service available.

### **QUALITY RV & SPORT RENTALS**

7475 E. Main St  
Farmington, NM  
(505) 327-4513  
[rentqualityrv.com](http://rentqualityrv.com)

Offering RV rental, repair, service and parts. Rental options include motorhomes, travel trailers, toy haulers and required equipment. Over 20 years of experience in RV, boat and other fiberglass repair.

### **B&L RV PARK AND STORAGE**

10 CR 1788  
Farmington, NM  
(505) 324-9844  
[parker3802@msn.com](mailto:parker3802@msn.com)

Open for short- and long-term stays, 60x90 ft. spaces with patios. 50/30/20 amp, water and waste hookups, free satellite TV, WiFi and trash disposal. Corrals on site for travelers with livestock. ATV tours also offered.

### **BROWN SPRINGS CAMPGROUND** CR 1980 Farmington, NM (505) 564-7600 [blm.gov/nm](http://blm.gov/nm)

10 primitive camping sites available with vault toilet, horseshoe pits, tent and RV camping allowed. Sites are free to use, no reservations allowed. Located in Glade Run Recreation Area.

### **HOMESTEAD RV PARK** 11 Rd 6432 Kirtland, NM (505) 598-9181 [homesteadrvparknm.com](http://homesteadrvparknm.com)

65 spaces, full hookups, big-rig friendly, 30 pull-through sites. 30/50 amp, free WiFi, DirecTV with ESPN. Cabin rentals. Restroom, shower and laundry facilities. Leashed pets permitted. Wheelchair accessible.

### **LAKE FARMINGTON** Main St / Hwy 516 Farmington, NM (505) 599-1400 [fmtn.com/](http://fmtn.com/) [lakefarmington](http://lakefarmington)

21 dry camping sites, 5 are large RV sites. No hookups, but fire rings, grills and picnic tables are available. Vault toilets open seasonally. Sites available via reservation or walk-up. Fees for camping and lake access.

### **MCGEE PARK RV PARK** #41 CR 5568 Farmington, NM (505) 325-5415 [sjcounty.net](http://sjcounty.net)

574 on-site RV spaces with electricity and water, and 200 dry RV spaces located near the county fairgrounds and SunRay Park & Casino. Leashed pets permitted.

### **MOORE'S RV PARK & CAMPGROUND** 1900 E. Blanco Blvd Bloomfield, NM (505) 632-8339 [mooresrvpark.com](http://mooresrvpark.com)

3 cabins, 9 tents and 60 pull-through RV sites with full hookup, 30/50 amps, free WiFi, showers, laundromat, pet park, seasonal swimming and recreational area.

### **S&S RV PARK** 988 Hwy 516 Aztec, NM (505) 860-0751 (505) 215-9787 [ssrvpark.net](http://ssrvpark.net)

Centrally located, this park offers daily and monthly rates. Features 10 sites, 50-amp service, free WiFi and is pet friendly.

### **SUNDOWNER MOBILE & RV PARK** 219 Airport Dr Farmington, NM (505) 327-1671 [sundownerpark.com](http://sundownerpark.com)

Farmington's downtown RV park. 34 full hookups, quiet, shaded spaces. Free WiFi, 30/50 amps, laundry, fitness and recreation centers, dog walk, self-contained RVs please. Reservations recommended.





# NUMBERS TO KNOW

## AREA VISITOR INFORMATION

FARMINGTON CONVENTION  
& VISITORS BUREAU  
(800) 448-1240  
(505) 326-7602

## AIRPORTS

FOUR CORNERS REGIONAL  
(505) 599-1394  
fmtn.org/airport

LA PLATA COUNTY  
flydurango.com

ALBUQUERQUE SUNPORT  
abqsunport.com

## CAR RENTALS

HERTZ  
(505) 327-6093 / (800) 654-3131  
hertz.com

## BANKS

CITIZENS BANK  
(505) 599-0100

FOUR CORNERS  
COMMUNITY BANK  
(505) 327-3222

WELLS FARGO  
(505) 566-2580

## CHAMBERS OF COMMERCE

AZTEC  
(505) 334-7646

BLOOMFIELD  
(505) 632-0880

KIRTLAND  
(505) 592-2215

FARMINGTON  
(505) 325-0279

## COMMUNITY & HEALTH CARE

BONNIE DALLAS SENIOR CENTER  
(505) 599-1380  
fmtn.org

THE BRIDGE AT FARMINGTON  
ASSISTED LIVING  
(505) 324-6200  
thebridgeatfarmington.com

CAREGIVERS IN YOUR HOME  
(505) 325-7777  
caregiversinyourhome.com

SAN JUAN REGIONAL MEDICAL CENTER  
(505) 609-2000

## PUBLIC TRANSPORTATION

RED APPLE TRANSIT  
(505) 325-3409  
fmtn.org

## Your Community Owned Hospital

San Juan Regional Medical Center offers a variety of specialty services so you can get the **quality care** you need, **right here at home.**

- Level III Trauma Center
- Air Ambulance
- Regional Heart Center
- Regional Cancer Center
- Spine Center
- Rehabilitation Hospital
- Nephrology
- Total Joint Program
- Obstetrics
- Midwifery Services
- Accredited Chest Pain Center
- Certified Primary Stroke Center

Personalized Care | Creating Life Better Here



SAN JUAN REGIONAL  
MEDICAL CENTER

505.609.2000 | sanjuanregional.com



FAMILY OWNED SINCE 1980  
OVER 100,000 USED BOOKS IN STOCK

- ☆ New Books
- ☆ Paperback Book Exchange
- ☆ Local Authors
- ☆ Special Orders & Gifts
- ☆ Special Events & Book Signings

2530 San Juan Blvd.  
Farmington, NM 87401  
505-327-4647

Open 9am-4pm  
Tuesday-Saturday

amysbookcase1.com





Make AZTEC, NEW MEXICO your next adventure! Explore Aztec Ruins National Monument, which dates back to the 11th century...

# EXPLORE

---

Aztec Ruins National Monument  
725 Ruins Road | Aztec, NM

---

AZTEC is home to over 300 Natural Sandstone Arches, Ancestral Pictographs, Pueblitos & Petroglyphs, Renowned Alien Run Mountain Bike Trails, Aztec Disc Golf Course, Aztec Museum & Pioneer Village, and so much more!

▶ Let us help plan your trip!

**AZTEC**

VISITOR CENTER

(888) 543-4629

[www.AztecNM.com](http://www.AztecNM.com)

# We'll give you your space.



## spread out. settle in.

**TOWNEPLACE  
SUITES<sup>®</sup>**  
BY MARRIOTT

fully-equipped kitchens • meeting & banquet rooms • indoor pool & hot tub  
private grilling area • 24-hour fitness facility • fresh hot breakfast  
guest & valet laundry • walk to shopping & restaurants • tesla charging station



**505.327.2442**

4200 Sierra Vista Drive

Farmington, NM

[www.marriott.com/fmnts](http://www.marriott.com/fmnts)